

Product datasheet for **TA322658S**

CEBPD Rabbit Polyclonal Antibody

Product data:

Product Type:	Primary Antibodies
Applications:	IHC, WB
Recommended Dilution:	WB: 500-2000 WB positive control: HeLa, LO2, RAW264.7, LOVO and A549 cell lysates IHC: 25-50 Positive control: Human esophagus cancer Predicted cell location: Nucleus
Reactivity:	Human, Mouse, Rat
Host:	Rabbit
Isotype:	IgG
Clonality:	Polyclonal
Immunogen:	Synthetic peptide corresponding to a region derived from 210-225 amino acids of Human CCAAT/enhancer-binding protein delta
Formulation:	PBS pH7.3, 0.05% NaN ₃ , 50% glycerol
Purification:	Antigen affinity purification
Conjugation:	Unconjugated
Storage:	Store at -20°C as received.
Stability:	Stable for 12 months from date of receipt.
Predicted Protein Size:	29 kDa
Gene Name:	CCAAT/enhancer binding protein delta
Database Link:	NP_005186 Entrez Gene 12609 Mouse Entrez Gene 25695 Rat Entrez Gene 1052 Human P49716



[View online »](#)

Background:

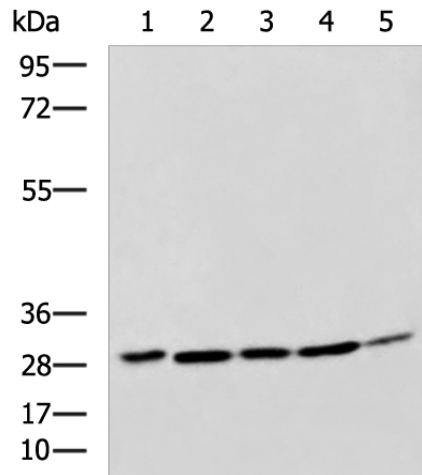
The protein encoded by this intronless gene is a bZIP transcription factor which can bind as a homodimer to certain DNA regulatory regions. It can also form heterodimers with the related protein CEBP-alpha. The encoded protein is important in the regulation of genes involved in immune and inflammatory responses; and may be involved in the regulation of genes associated with activation and/or differentiation of macrophages. The cytogenetic location of this locus has been reported as both 8p11 and 8q11.

Synonyms:

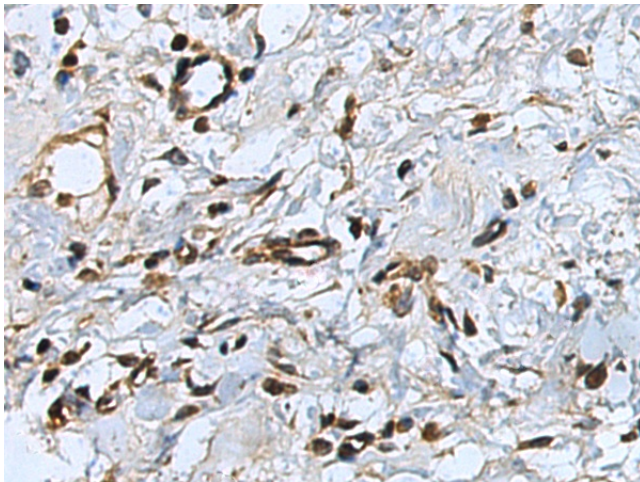
C; CELF; CRP3; EBP-delta; NF-IL6-beta

Protein Families:

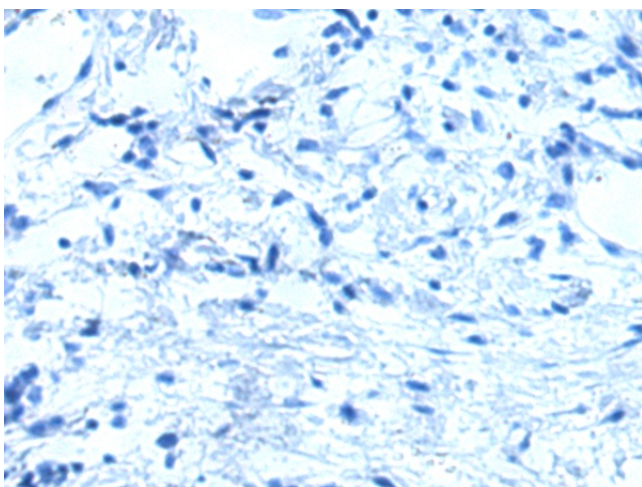
Druggable Genome, Transcription Factors

Product images:


Gel: 8%SDS-PAGE
 Lysate: 40 µg
 Lane 1-5: HeLa
 LO2
 RAW264.7
 LOVO and A549 cell lysates
 Primary antibody: [TA322658] (CEBPD Antibody)
 at dilution 1/800
 Secondary antibody: Goat anti rabbit IgG at
 1/5000 dilution
 Exposure time: 1 minute



Immunohistochemistry of paraffin-embedded
 Human esophagus cancer tissue using
 [TA322658] (CEBPD Antibody) at dilution 1/25
 (Original magnification: ×200)



Immunohistochemistry of paraffin-embedded Human esophagus cancer tissue using [TA322658] (CEBPD Antibody) at dilution 1/25, treated with synthetic peptide. (Original magnification: $\times 200$)