

## Product datasheet for **TA322658**

### CEBPD Rabbit Polyclonal Antibody

#### Product data:

|                         |  |
|-------------------------|--|
| Product Type:           | Primary Antibodies   |
| Applications:           | IHC, WB  |
| Recommended Dilution:   | WB: 500-2000<br>WB positive control: HeLa, LO2, RAW264.7, LOVO and A549 cell lysates<br>IHC: 25-50<br>Positive control: Human esophagus cancer<br>Predicted cell location: Nucleus |
| Reactivity:             | Human, Mouse, Rat  |
| Host:                   | Rabbit   |
| Isotype:                | IgG  |
| Clonality:              | Polyclonal   |
| Immunogen:              | Synthetic peptide corresponding to a region derived from 210-225 amino acids of Human CCAAT/enhancer-binding protein delta   |
| Formulation:            | PBS pH7.3, 0.05% NaN <sub>3</sub> , 50% glycerol   |
| Concentration:          | lot specific   |
| Purification:           | Antigen affinity purification  |
| Conjugation:            | Unconjugated   |
| Storage:                | Store at -20°C as received.  |
| Stability:              | Stable for 12 months from date of receipt.   |
| Predicted Protein Size: | 29 kDa   |
| Gene Name:              | CCAAT/enhancer binding protein delta   |
| Database Link:          | <a href="#">NP_005186</a><br><a href="#">Entrez Gene 12609 Mouse</a> <a href="#">Entrez Gene 25695 Rat</a> <a href="#">Entrez Gene 1052 Human</a><br><a href="#">P49716</a>        |



[View online »](#)

**Background:**

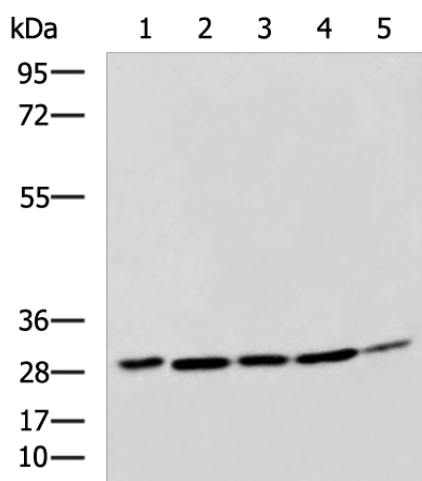
The protein encoded by this intronless gene is a bZIP transcription factor which can bind as a homodimer to certain DNA regulatory regions. It can also form heterodimers with the related protein CEBP-alpha. The encoded protein is important in the regulation of genes involved in immune and inflammatory responses; and may be involved in the regulation of genes associated with activation and/or differentiation of macrophages. The cytogenetic location of this locus has been reported as both 8p11 and 8q11.

**Synonyms:**

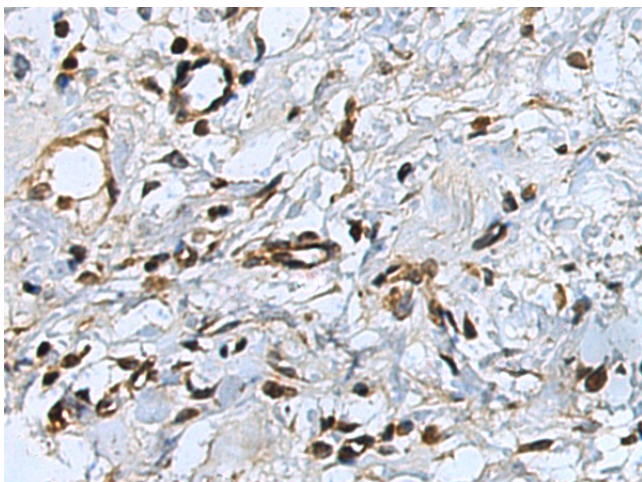
C; CELF; CRP3; EBP-delta; NF-IL6-beta

**Protein Families:**

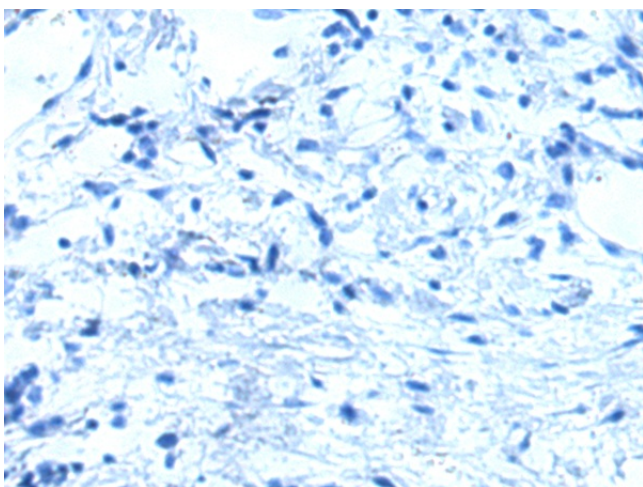
Druggable Genome, Transcription Factors

**Product images:**

Gel: 8%SDS-PAGE  
Lysate: 40  $\mu$ g  
Lane 1-5: HeLa  
LO2  
RAW264.7  
LOVO and A549 cell lysates  
Primary antibody: TA322658 (CEBPD Antibody) at dilution 1/800  
Secondary antibody: Goat anti rabbit IgG at 1/5000 dilution  
Exposure time: 1 minute



Immunohistochemistry of paraffin-embedded Human esophagus cancer tissue using TA322658 (CEBPD Antibody) at dilution 1/25 (Original magnification:  $\times$ 200)



Immunohistochemistry of paraffin-embedded Human esophagus cancer tissue using TA322658 (CEBPD Antibody) at dilution 1/25, treated with synthetic peptide. (Original magnification: ×200)