

## Product datasheet for **TA322657**

### CEBP Beta (CEBPB) Rabbit Polyclonal Antibody

#### Product data:

Product Type:	Primary Antibodies
Applications:	WB
Recommended Dilution:	WB: 1:500-1000
Reactivity:	Human
Host:	Rabbit
Isotype:	IgG
Clonality:	Polyclonal
Immunogen:	Peptide sequence around aa.336~340(E-P-L-L-A) derived from Human C/EBP $\beta$ .
Formulation:	PBS pH7.3, 0.05% NaN <sub>3</sub> , 50% glycerol
Concentration:	lot specific
Purification:	Antigen affinity purification
Conjugation:	Unconjugated
Storage:	Store at -20°C as received.
Stability:	Stable for 12 months from date of receipt.
Predicted Protein Size:	36 kDa
Gene Name:	CCAAT/enhancer binding protein beta
Database Link:	<a href="#">NP_005185</a> <a href="#">Entrez Gene 1051 Human</a> <a href="#">P17676</a>

**Background:** Important transcriptional activator in the regulation of genes involved in immune and inflammatory responses. Specifically binds to an IL-1 response element in the IL-6 gene. NF-IL6 also binds to regulatory regions of several acute-phase and cytokines genes. It probably plays a role in the regulation of acute-phase reaction, inflammation and hemopoiesis. The consensus recognition site is 5'-T[TG]NNGNAA[TG]-3'. Functions in brown adipose tissue (BAT) differentiation

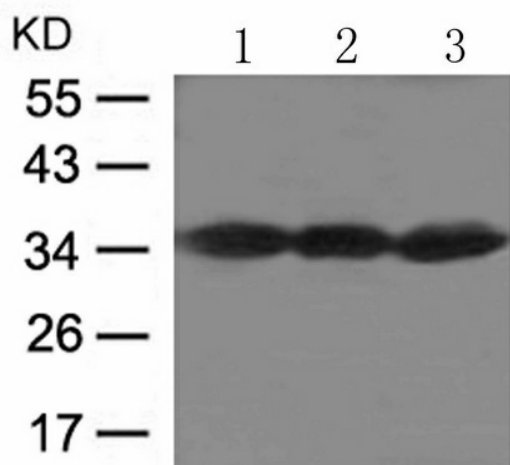
**Synonyms:** C; EBP-beta; IL6DBP; NF-IL6; TCF5

**Protein Families:** Druggable Genome, ES Cell Differentiation/IPS, Transcription Factors



[View online »](#)

## Product images:



Predicted band size: 36 kDa. Positive control: Rat brain, Mouse brain tissue and 293 cells lysate. Recommended dilution: 1/ 500-1000. (Gel: 10%SDS-PAGE Lane 1, 2, 3: Rat brain, Mouse brain tissue and 293 cells lysate Lysates: 30 ug per lane Primary antibody: 1/500 dilution Secondary antibody: Goat anti Rabbit IgG - H&L (HRP) at 1/10000 dilution Exposure time: 1 minute)