

Product datasheet for **TA322643**

FAT (FAT1) Rabbit Polyclonal Antibody

Product data:

Product Type:	Primary Antibodies
Applications:	WB
Recommended Dilution:	ELISA: 1:2000-10000, WB: 1:2000-5000
Reactivity:	Human
Host:	Rabbit
Isotype:	IgG
Clonality:	Polyclonal
Immunogen:	Synthetic peptide (KLH-coupled) derived from human FAT1
Formulation:	PBS pH7.3, 0.05% NaN ₃ , 50% glycerol
Concentration:	lot specific
Purification:	Antigen affinity purification
Conjugation:	Unconjugated
Storage:	Store at -20°C as received.
Stability:	Stable for 12 months from date of receipt.
Predicted Protein Size:	50 kDa
Gene Name:	FAT atypical cadherin 1
Database Link:	NP_005236 Entrez Gene 2195 Human Q14517



[View online »](#)

Background:

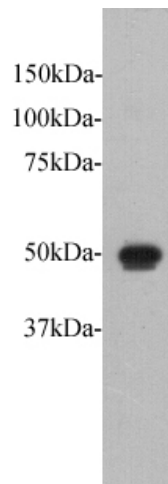
This gene is an ortholog of the *Drosophila* fat gene, which encodes a tumor suppressor essential for controlling cell proliferation during *Drosophila* development. The gene product is a member of the cadherin superfamily, a group of integral membrane proteins characterized by the presence of cadherin-type repeats. In addition to containing 34 tandem cadherin-type repeats, the gene product has five epidermal growth factor (EGF)-like repeats and one laminin A-G domain. This gene is expressed at high levels in a number of fetal epithelia. Its product probably functions as an adhesion molecule and/or signaling receptor, and is likely to be important in developmental processes and cell communication. Transcript variants derived from alternative splicing and/or alternative promoter usage exist, but they have not been fully described.

Synonyms:

CDHF7; CDHR8; FAT; hFat1; ME5

Protein Families:

Druggable Genome, Transmembrane

Product images:

Predicted band size: 50 kDa. Positive control: Recombinant protein. Recommended dilution: 1/2000-5000. (Gel: 10%SDS-PAGE Protein: 2 ug Primary antibody: 1/2000 dilution Secondary antibody: Goat anti Rabbit IgG - H&L (HRP) at 1/10000 dilution Exposure time: 1 minute)