

Product datasheet for **TA322642S**

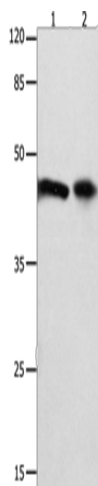
FOXL1 Rabbit Polyclonal Antibody

Product data:

Product Type:	Primary Antibodies
Applications:	WB
Recommended Dilution:	WB: 500-2000 WB positive control: 293T cells and mouse intestinum tenue tissue
Reactivity:	Human, Mouse
Host:	Rabbit
Isotype:	IgG
Clonality:	Polyclonal
Immunogen:	Synthetic peptide corresponding to a region derived from 2-15 amino acids of Human forkhead box L1
Formulation:	PBS pH7.3, 0.05% NaN ₃ , 50% glycerol
Purification:	Antigen affinity purification
Conjugation:	Unconjugated
Storage:	Store at -20°C as received.
Stability:	Stable for 12 months from date of receipt.
Predicted Protein Size:	36 kDa
Gene Name:	forkhead box L1
Database Link:	NP_005241 Entrez Gene 14241 Mouse Entrez Gene 2300 Human Q12952
Background:	This gene encodes a member of the forkhead/winged helix-box (FOX) family of transcription factors. FOX transcription factors are characterized by a distinct DNA-binding forkhead domain and play critical roles in the regulation of multiple processes including metabolism; cell proliferation and gene expression during ontogenesis. Transcription factor required for proper proliferation and differentiation in the gastrointestinal epithelium. Target gene of the hedgehog (Hh) signaling pathway via GLI2 AND GLI3 transcription factors.
Synonyms:	FKH6; FKHL11; FREAC7
Protein Families:	Transcription Factors



[View online »](#)

Product images:

Gel: 10%SDS-PAGE
Lysate: 40 μ g
Lane 1-2: 293T cells
mouse intestinum tenue tissue
Primary antibody: [TA322642] (FOXL1 Antibody)
at dilution 1/850
Secondary antibody: Goat anti rabbit IgG at
1/8000 dilution
Exposure time: 30 seconds