

## Product datasheet for **TA322642**

### FOX L1 Rabbit Polyclonal Antibody

#### Product data:

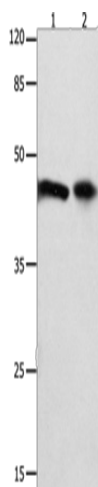
Product Type:	Primary Antibodies
Applications:	WB
Recommended Dilution:	WB: 500-2000 WB positive control: 293T cells and mouse intestinum tenue tissue
Reactivity:	Human, Mouse
Host:	Rabbit
Isotype:	IgG
Clonality:	Polyclonal
Immunogen:	Synthetic peptide corresponding to a region derived from 2-15 amino acids of Human forkhead box L1
Formulation:	PBS pH7.3, 0.05% NaN <sub>3</sub> , 50% glycerol
Concentration:	lot specific
Purification:	Antigen affinity purification
Conjugation:	Unconjugated
Storage:	Store at -20°C as received.
Stability:	Stable for 12 months from date of receipt.
Predicted Protein Size:	36 kDa
Gene Name:	forkhead box L1
Database Link:	<a href="#">NP_005241</a> <a href="#">Entrez Gene 14241 Mouse</a> <a href="#">Entrez Gene 2300 Human</a> <a href="#">Q12952</a>
Background:	This gene encodes a member of the forkhead/winged helix-box (FOX) family of transcription factors. FOX transcription factors are characterized by a distinct DNA-binding forkhead domain and play critical roles in the regulation of multiple processes including metabolism; cell proliferation and gene expression during ontogenesis. Transcription factor required for proper proliferation and differentiation in the gastrointestinal epithelium. Target gene of the hedgehog (Hh) signaling pathway via GLI2 AND GLI3 transcription factors.
Synonyms:	FKH6; FKHL11; FREAC7



[View online »](#)

Protein Families: Transcription Factors

### Product images:



Gel: 10%SDS-PAGE

Lysate: 40  $\mu$ g

Lane 1-2: 293T cells

mouse intestinum tenue tissue

Primary antibody: TA322642 (FOXL1 Antibody) at dilution 1/850

Secondary antibody: Goat anti rabbit IgG at 1/8000 dilution

Exposure time: 30 seconds