

## Product datasheet for **TA322638**

### GDNF Receptor alpha 1 (GFRA1) Rabbit Polyclonal Antibody

#### Product data:

Product Type:	Primary Antibodies
Applications:	IHC, WB
Recommended Dilution:	WB: 500-2000 WB positive control: Rat brain tissue lysate IHC: 50-200 Positive control: Human brain Predicted cell location: Cytoplasm
Reactivity:	Human, Mouse, Rat
Host:	Rabbit
Isotype:	IgG
Clonality:	Polyclonal
Immunogen:	Synthetic peptide corresponding to a region derived from 370-384 amino acids of Human GDNF family receptor alpha 1
Formulation:	PBS pH7.3, 0.05% NaN <sub>3</sub> , 50% glycerol
Concentration:	lot specific
Purification:	Antigen affinity purification
Conjugation:	Unconjugated
Storage:	Store at -20°C as received.
Stability:	Stable for 12 months from date of receipt.
Predicted Protein Size:	51 kDa
Gene Name:	GDNF family receptor alpha 1
Database Link:	<a href="#">NP_005255</a> <a href="#">Entrez Gene 14585 Mouse</a> <a href="#">Entrez Gene 25454 Rat</a> <a href="#">Entrez Gene 2674 Human</a> <a href="#">P56159</a>



[View online »](#)

**Background:**

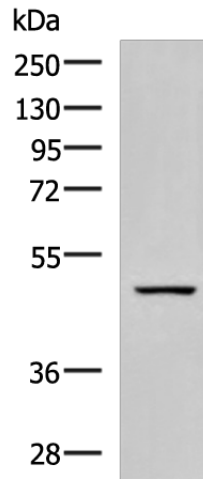
Glial cell line-derived neurotrophic factor (GDNF) and neurturin (NTN) are two structurally related; potent neurotrophic factors that play key roles in the control of neuron survival and differentiation. The protein encoded by this gene is a member of the GDNF receptor family. It is a glycosylphosphatidylinositol(GPI)-linked cell surface receptor for both GDNF and NTN; and mediates activation of the RET tyrosine kinase receptor. This gene is a candidate gene for Hirschsprung disease. Multiple alternatively spliced transcript variants have been described for this gene.

**Synonyms:**

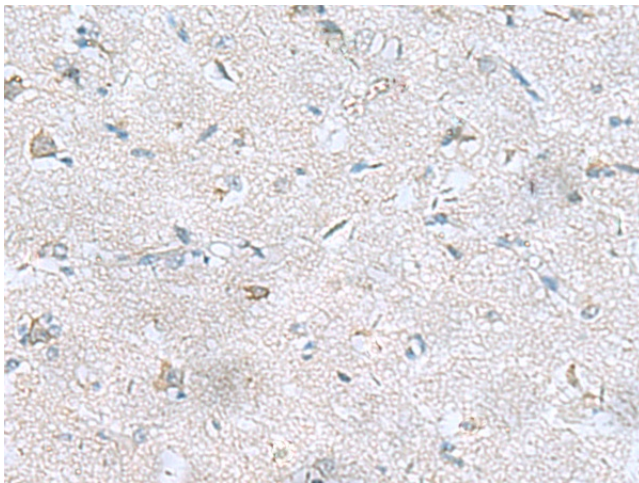
GDNFR; GDNFRA; GFR-ALPHA-1; RET1L; RETL1; TRNR1

**Protein Families:**

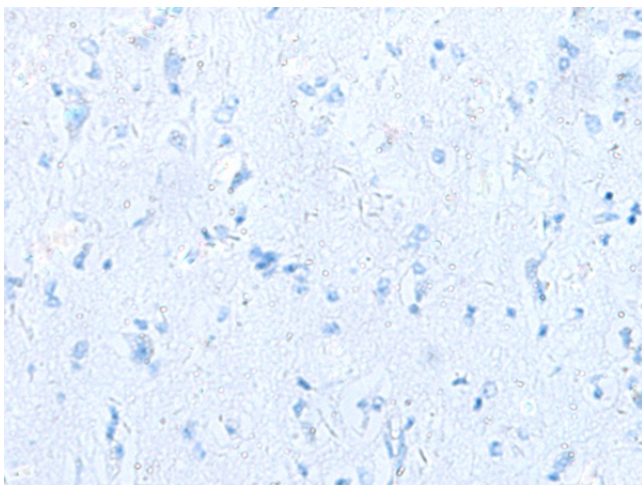
Druggable Genome

**Product images:**


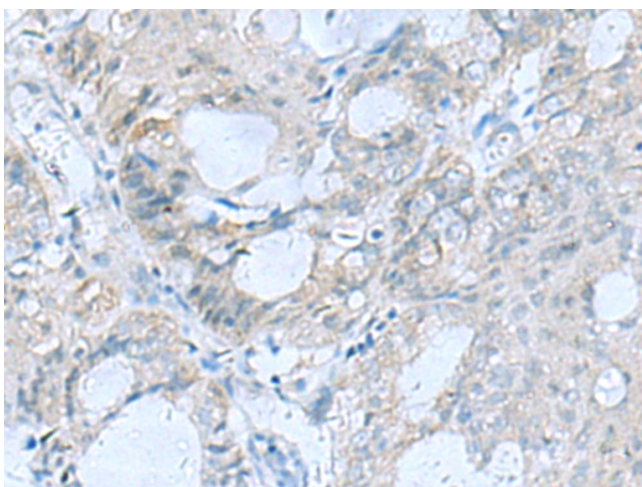
Gel: 8%SDS-PAGE  
 Lysate: 40 µg  
 Lane: Rat brain tissue lysate  
 Primary antibody: TA322638 (GFRA1 Antibody) at dilution 1/800  
 Secondary antibody: Goat anti rabbit IgG at 1/5000 dilution  
 Exposure time: 90 seconds



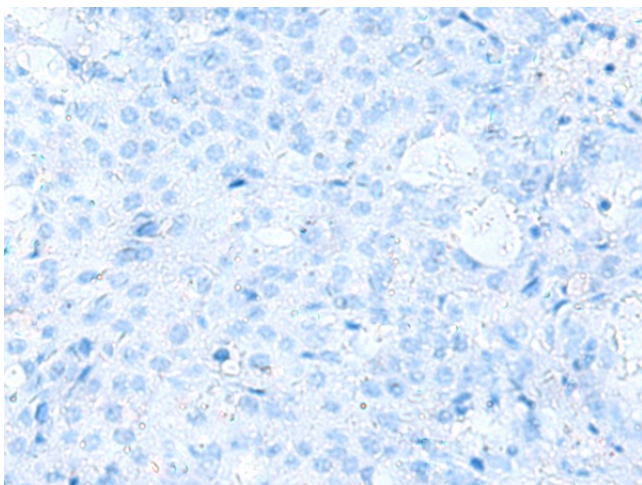
Immunohistochemistry of paraffin-embedded Human brain tissue using TA322638 (GFRA1 Antibody) at dilution 1/65 (Original magnification: ×200)



Immunohistochemistry of paraffin-embedded Human brain tissue using TA322638 (GFRA1 Antibody) at dilution 1/65, treated with synthetic peptide. (Original magnification:  $\times 200$ )



Immunohistochemistry of paraffin-embedded Human ovarian cancer tissue using TA322638 (GFRA1 Antibody) at dilution 1/65 (Original magnification:  $\times 200$ )



Immunohistochemistry of paraffin-embedded Human ovarian cancer tissue using TA322638 (GFRA1 Antibody) at dilution 1/65, treated with synthetic peptide. (Original magnification:  $\times 200$ )