

Product datasheet for **TA322637**

ALR (GFER) Rabbit Polyclonal Antibody

Product data:

Product Type:	Primary Antibodies
Applications:	IHC, WB
Recommended Dilution:	WB: 500-2000 WB positive control: Mouse liver tissue IHC: 50-200 Positive control: Human thyroid cancer Predicted cell location: Cytoplasm
Reactivity:	Human, Mouse, Rat
Host:	Rabbit
Isotype:	IgG
Clonality:	Polyclonal
Immunogen:	Fusion protein corresponding to a region derived from 1-125 amino acids of human growth factor, augmenter of liver regeneration
Formulation:	PBS pH7.3, 0.05% NaN ₃ , 50% glycerol
Concentration:	lot specific
Purification:	Antigen affinity purification
Conjugation:	Unconjugated
Storage:	Store at -20°C as received.
Stability:	Stable for 12 months from date of receipt.
Predicted Protein Size:	23 kDa
Gene Name:	growth factor, augmenter of liver regeneration
Database Link:	NP_005253 Entrez Gene 11692 Mouse Entrez Gene 27100 Rat Entrez Gene 2671 Human P55789



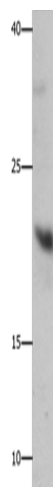
[View online »](#)

Background:

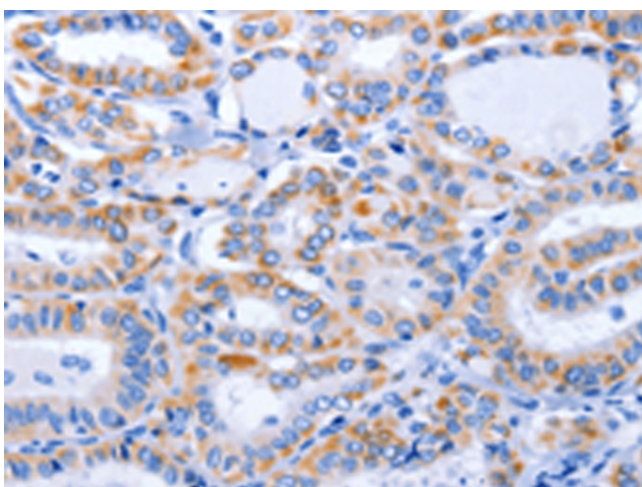
The hepatotrophic factor designated augments of liver regeneration (ALR) is thought to be one of the factors responsible for the extraordinary regenerative capacity of mammalian liver. It has also been called hepatic regenerative stimulation substance (HSS). The gene resides on chromosome 16 in the interval containing the locus for polycystic kidney disease (PKD1). The putative gene product is 42 similar to the scERV1 protein of yeast. The yeast scERV1 gene had been found to be essential for oxidative phosphorylation; the maintenance of mitochondrial genomes; and the cell division cycle. The human gene is both the structural and functional homolog of the yeast scERV1 gene.

Synonyms:

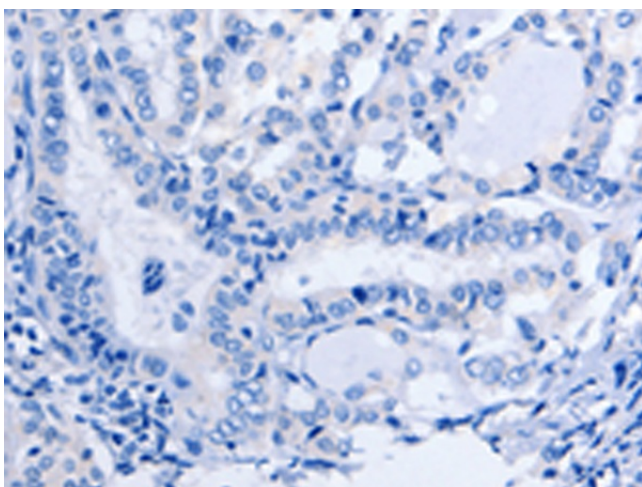
ALR; ERV1; HERV1; HPO; HPO1; HPO2; HSS

Product images:

Gel: 8%SDS-PAGE
Lysate: 40 µg
Lane: Mouse liver tissue
Primary antibody: TA322637 (GFER Antibody) at dilution 1/750
Secondary antibody: Goat anti rabbit IgG at 1/8000 dilution
Exposure time: 1 minute



Immunohistochemistry of paraffin-embedded Human thyroid cancer tissue using TA322637 (GFER Antibody) at dilution 1/50 (Original magnification: ×200)



Immunohistochemistry of paraffin-embedded Human thyroid cancer tissue using TA322637 (GFER Antibody) at dilution 1/50, treated with fusion protein. (Original magnification: ×200)