

Product datasheet for **TA322635**

GDF 9 (GDF9) Rabbit Polyclonal Antibody

Product data:

Product Type:	Primary Antibodies
Applications:	IHC, WB
Recommended Dilution:	WB: 500-2000 WB positive control: TM4 and LOVO cell lysates IHC: 50-100 Positive control: Human liver cancer Predicted cell location: Secreted
Reactivity:	Human, Mouse
Host:	Rabbit
Isotype:	IgG
Clonality:	Polyclonal
Immunogen:	Fusion protein corresponding to a region derived from 320-454 amino acids of Human Growth/differentiation factor 9
Formulation:	PBS pH7.3, 0.05% NaN ₃ , 50% glycerol
Concentration:	lot specific
Purification:	Antigen affinity purification
Conjugation:	Unconjugated
Storage:	Store at -20°C as received.
Stability:	Stable for 12 months from date of receipt.
Predicted Protein Size:	51 kDa
Gene Name:	growth differentiation factor 9
Database Link:	NP_005251 Entrez Gene 14566 Mouse Entrez Gene 2661 Human O60383
Background:	Growth factors synthesized by ovarian somatic cells directly affect oocyte growth and function. Growth differentiation factor-9 (GDF9) is expressed in oocytes and is thought to be required for ovarian folliculogenesis. GDF9 is a member of the transforming growth factor-beta superfamily.

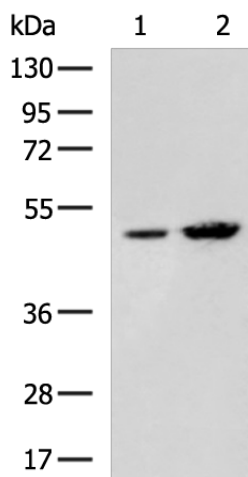


[View online »](#)

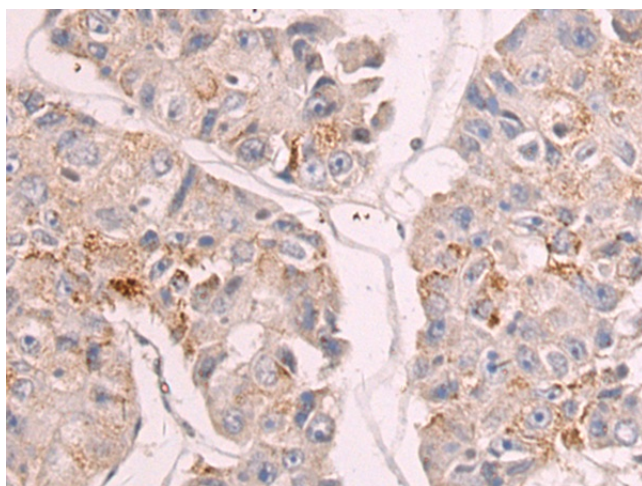
Synonyms: growth differentiation factor 9; OTTHUMP00000066213

Protein Families: Adult stem cells, Cancer stem cells, Druggable Genome, Embryonic stem cells, ES Cell Differentiation/IPS, Secreted Protein, Stem cell - Pluripotency, Stem cell relevant signaling - TGFb/BMP signaling pathway, Transmembrane

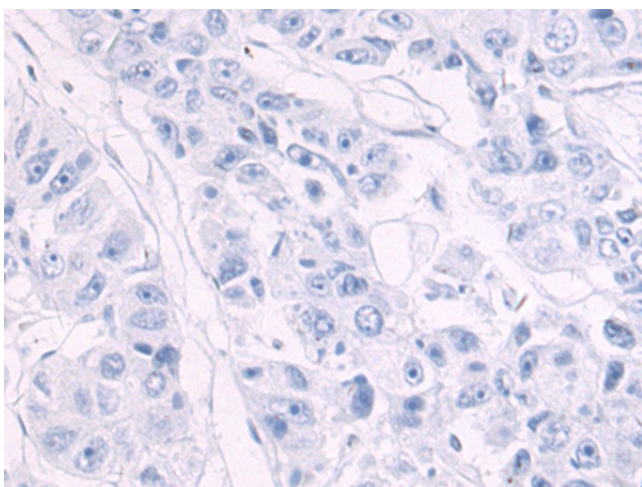
Product images:



Gel: 8%SDS-PAGE
 Lysate: 40 µg
 Lane 1-2: TM4 and LOVO cell lysates
 Primary antibody: TA322635 (GDF9 Antibody) at dilution 1/400
 Secondary antibody: Goat anti rabbit IgG at 1/5000 dilution
 Exposure time: 40 seconds



Immunohistochemistry of paraffin-embedded Human liver cancer tissue using TA322635 (GDF9 Antibody) at dilution 1/55 (Original magnification: ×200)



Immunohistochemistry of paraffin-embedded Human liver cancer tissue using TA322635 (GDF9 Antibody) at dilution 1/55, treated with fusion protein. (Original magnification: ×200)