

Product datasheet for **TA322631**

Alanine Transaminase (GPT) Rabbit Polyclonal Antibody

Product data:

Product Type:	Primary Antibodies
Applications:	IHC, WB
Recommended Dilution:	WB: 200-1000 WB positive control: A431 cells IHC: 25-100 Positive control: Human liver cancer Predicted cell location: Cytoplasm
Reactivity:	Human
Host:	Rabbit
Isotype:	IgG
Clonality:	Polyclonal
Immunogen:	Synthetic peptide corresponding to a region derived from 1-14 amino acids of Human Alanine aminotransferase 1
Formulation:	PBS pH7.3, 0.05% NaN ₃ , 50% glycerol
Concentration:	lot specific
Purification:	Antigen affinity purification
Conjugation:	Unconjugated
Storage:	Store at -20°C as received.
Stability:	Stable for 12 months from date of receipt.
Predicted Protein Size:	55 kDa
Gene Name:	glutamic-pyruvate transaminase (alanine aminotransferase)
Database Link:	NP_005300 Entrez Gene 2875 Human P24298



[View online »](#)

Background:

This gene encodes cytosolic alanine aminotransaminase 1 (ALT1); also known as glutamate-pyruvate transaminase 1. This enzyme catalyzes the reversible transamination between alanine and 2-oxoglutarate to generate pyruvate and glutamate and; therefore; plays a key role in the intermediary metabolism of glucose and amino acids. Serum activity levels of this enzyme are routinely used as a biomarker of liver injury caused by drug toxicity; infection; alcohol; and steatosis. A related gene on chromosome 16 encodes a putative mitochondrial alanine aminotransaminase.

Synonyms:

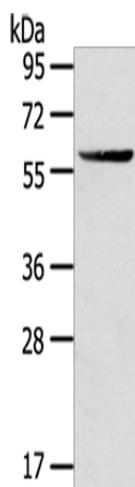
AAT1; ALT1; GPT1

Protein Families:

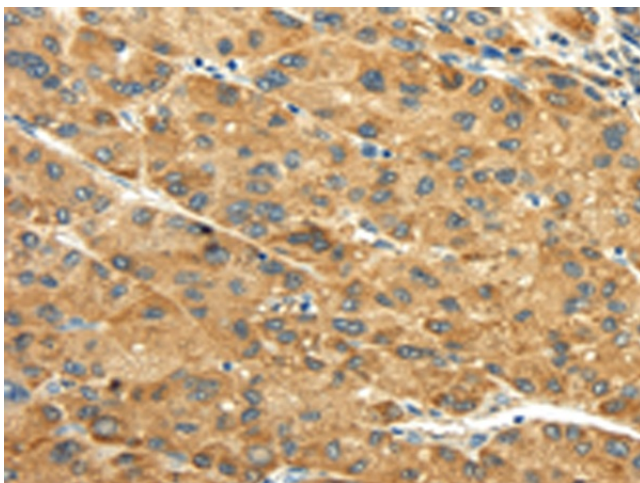
Druggable Genome

Protein Pathways:

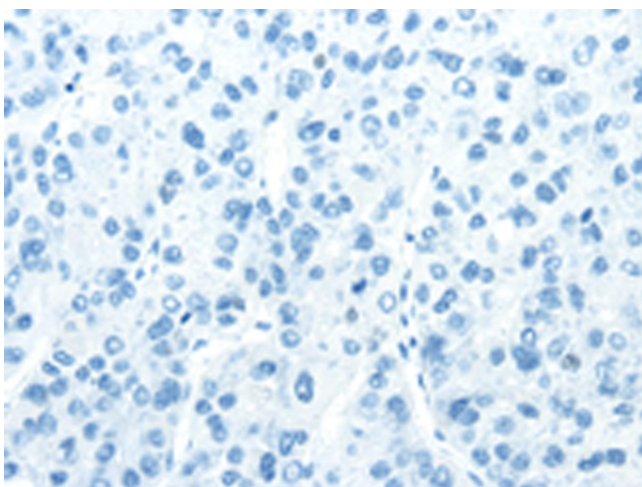
Alanine, aspartate and glutamate metabolism, Metabolic pathways

Product images:

Gel: 8%SDS-PAGE
Lysate: 40 µg
Lane: A431 cells
Primary antibody: TA322631 (GPT Antibody) at dilution 1/200
Secondary antibody: Goat anti rabbit IgG at 1/8000 dilution
Exposure time: 3 minutes



Immunohistochemistry of paraffin-embedded Human liver cancer tissue using TA322631 (GPT Antibody) at dilution 1/30 (Original magnification: ×200)



Immunohistochemistry of paraffin-embedded Human liver cancer tissue using TA322631 (GPT Antibody) at dilution 1/30, treated with synthetic peptide. (Original magnification: x200)