

Product datasheet for **TA322626S**

HMG4 (HMGB3) Rabbit Polyclonal Antibody

Product data:

Product Type:	Primary Antibodies
Applications:	IHC, WB
Recommended Dilution:	WB: 500-2000 WB positive control: 293T and hela cells, mouse lung and brain tissue IHC: 20-100 Positive control: Human colon cancer Predicted cell location: Nucleus
Reactivity:	Human, Mouse
Host:	Rabbit
Isotype:	IgG
Clonality:	Polyclonal
Immunogen:	Synthetic peptide corresponding to a region derived from 164-178 amino acids of Human high mobility group box 3
Formulation:	PBS pH7.3, 0.05% NaN ₃ , 50% glycerol
Purification:	Antigen affinity purification
Conjugation:	Unconjugated
Storage:	Store at -20°C as received.
Stability:	Stable for 12 months from date of receipt.
Predicted Protein Size:	23 kDa
Gene Name:	high mobility group box 3
Database Link:	NP_005333 Entrez Gene 15354 Mouse Entrez Gene 3149 Human O15347
Background:	High-mobility group protein B3 is a protein that in humans is encoded by the HMGB3 gene. HMGB3 belongs to the high mobility group (HMG) protein superfamily. Like HMG1 and HMG2; HMGB3 contains DNA-binding HMG box domains and is classified into the HMG box subfamily. Members of the HMG box subfamily are thought to play a fundamental role in DNA replication; nucleosome assembly and transcription.

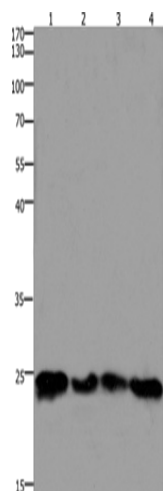


[View online »](#)

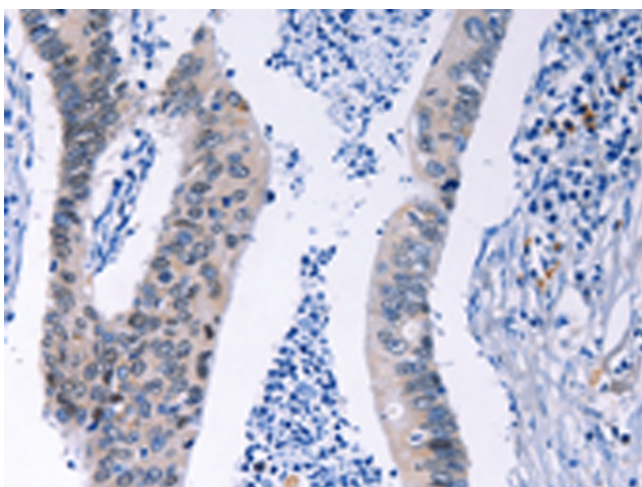
Synonyms: HMG-2a; HMG-4; HMG2A; HMG4

Protein Families: Transcription Factors

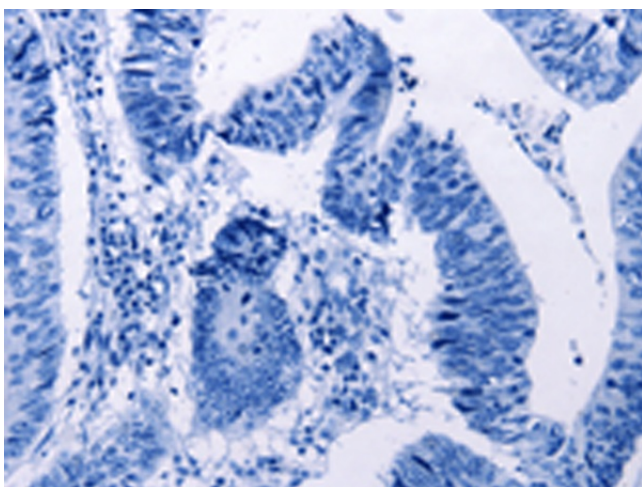
Product images:



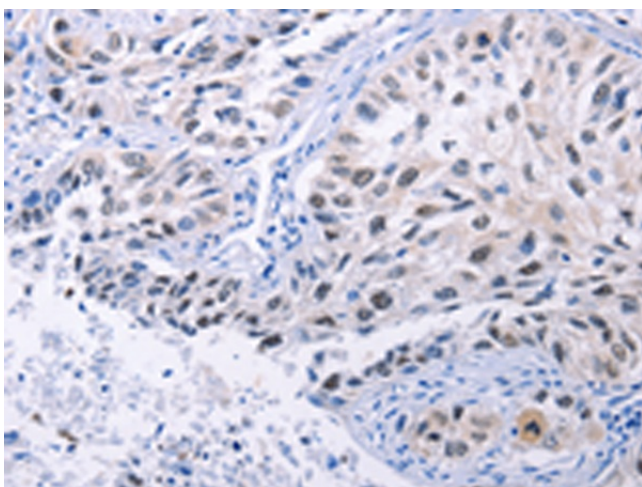
Gel: 10%SDS-PAGE
Lysate: 30 µg
Lane 1-4: 293T cells
hela cells
mouse lung tissue
Mouse brain tissue
Primary antibody: [TA322626] (HMGB3 Antibody)
at dilution 1/400
Secondary antibody: Goat anti rabbit IgG at
1/8000 dilution
Exposure time: 1.5 minutes



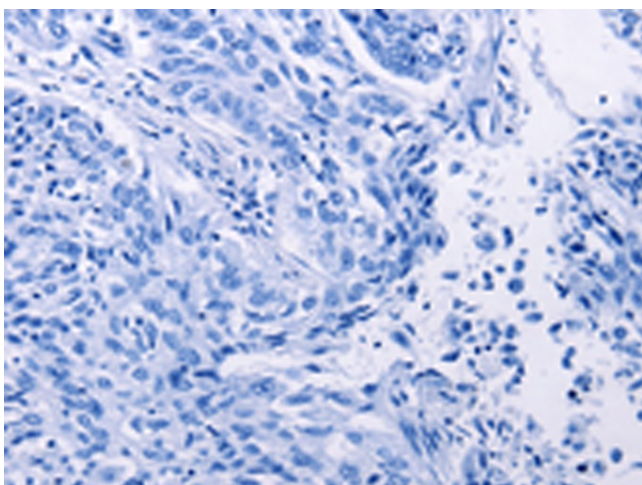
Immunohistochemistry of paraffin-embedded
Human colon cancer tissue using [TA322626]
(HMGB3 Antibody) at dilution 1/20 (Original
magnification: ×200)



Immunohistochemistry of paraffin-embedded Human colon cancer tissue using [TA322626] (HMGB3 Antibody) at dilution 1/20, treated with synthetic peptide. (Original magnification: $\times 200$)



Immunohistochemistry of paraffin-embedded Human lung cancer tissue using [TA322626] (HMGB3 Antibody) at dilution 1/20 (Original magnification: $\times 200$)



Immunohistochemistry of paraffin-embedded Human lung cancer tissue using [TA322626] (HMGB3 Antibody) at dilution 1/20, treated with synthetic peptide. (Original magnification: $\times 200$)