

Product datasheet for **TA322625**

JUND Rabbit Polyclonal Antibody

Product data:

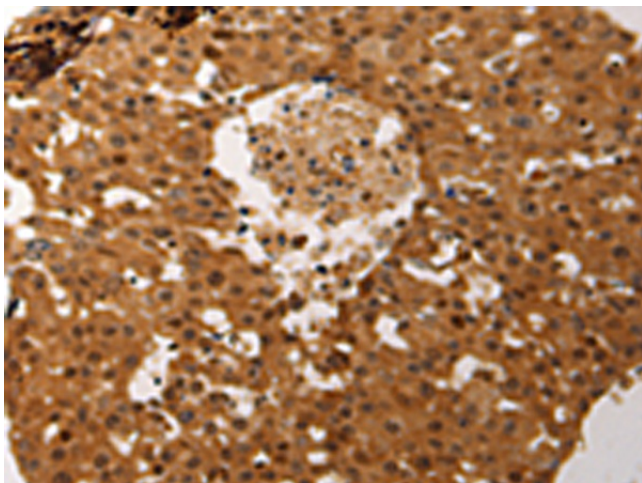
Product Type:	Primary Antibodies
Applications:	IHC
Recommended Dilution:	IHC: 50-200 Positive control: Human ovarian cancer Predicted cell location: Nucleus
Reactivity:	Human, Mouse, Rat
Host:	Rabbit
Isotype:	IgG
Clonality:	Polyclonal
Immunogen:	Synthetic peptide corresponding to a region derived from 248-262 amino acids of human jun D proto-oncogene
Formulation:	PBS pH7.3, 0.05% NaN ₃ , 50% glycerol
Concentration:	lot specific
Purification:	Antigen affinity purification
Conjugation:	Unconjugated
Storage:	Store at -20°C as received.
Stability:	Stable for 12 months from date of receipt.
Gene Name:	JunD proto-oncogene, AP-1 transcription factor subunit
Database Link:	NP_005345 Entrez Gene 16478 Mouse Entrez Gene 24518 Rat Entrez Gene 3727 Human P17535
Background:	The protein encoded by this intronless gene is a member of the JUN family; and a functional component of the AP1 transcription factor complex. It has been proposed to protect cells from p53-dependent senescence and apoptosis. Alternate translation initiation site usage results in the production of different isoforms.
Synonyms:	AP-1
Protein Families:	Druggable Genome, Transcription Factors



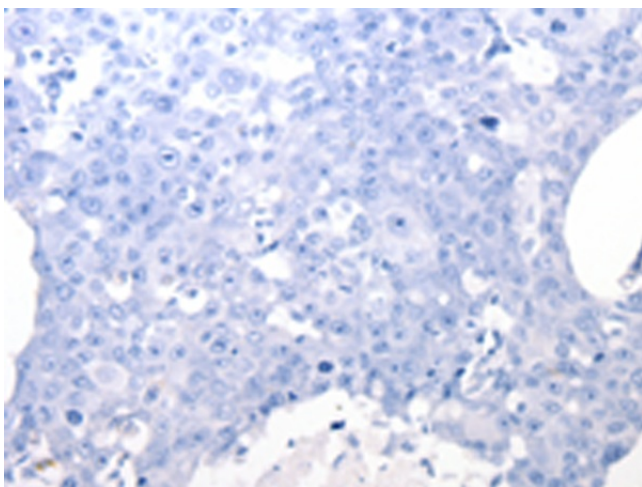
[View online »](#)

Protein Pathways: MAPK signaling pathway

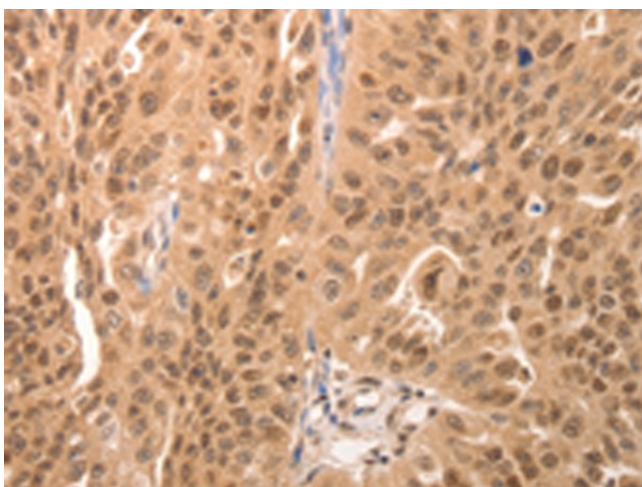
Product images:



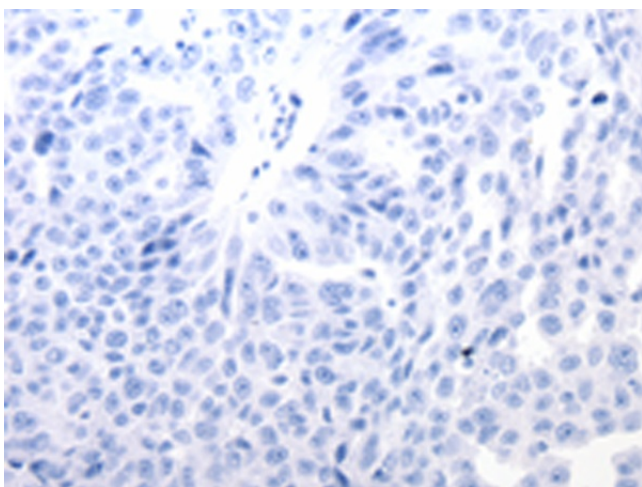
Immunohistochemistry of paraffin-embedded Human ovarian cancer tissue using TA322625 (JUND Antibody) at dilution 1/60 (Original magnification: $\times 200$)



Immunohistochemistry of paraffin-embedded Human ovarian cancer tissue using TA322625 (JUND Antibody) at dilution 1/60, treated with synthetic peptide. (Original magnification: $\times 200$)



Immunohistochemistry of paraffin-embedded Human breast cancer tissue using TA322625 (JUND Antibody) at dilution 1/60 (Original magnification: $\times 200$)



Immunohistochemistry of paraffin-embedded Human breast cancer tissue using TA322625 (JUND Antibody) at dilution 1/60, treated with synthetic peptide. (Original magnification: $\times 200$)