

Product datasheet for **TA322621S**

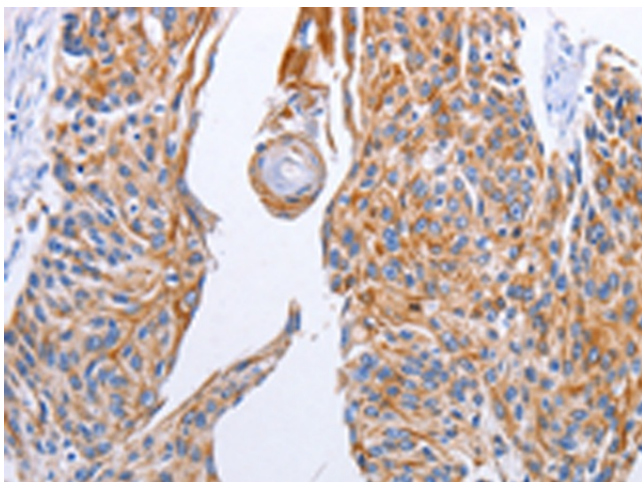
Hormone sensitive lipase (LIPE) Rabbit Polyclonal Antibody

Product data:

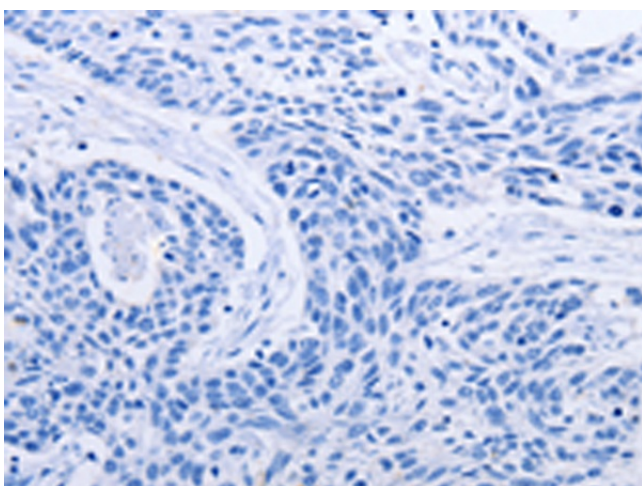
Product Type:	Primary Antibodies
Applications:	IHC
Recommended Dilution:	IHC: 10-50 Positive control: Human esophagus cancer Predicted cell location: Cell membrane, Cytoplasm
Reactivity:	Human, Mouse, Rat
Host:	Rabbit
Isotype:	IgG
Clonality:	Polyclonal
Immunogen:	Fusion protein corresponding to a region derived from 699-908 amino acids of human lipase, hormone-sensitive
Formulation:	PBS pH7.3, 0.05% NaN ₃ , 50% glycerol
Purification:	Antigen affinity purification
Conjugation:	Unconjugated
Storage:	Store at -20°C as received.
Stability:	Stable for 12 months from date of receipt.
Gene Name:	lipase E, hormone sensitive type
Database Link:	NP_005348 Entrez Gene 16890 Mouse Entrez Gene 25330 Rat Entrez Gene 3991 Human Q05469
Background:	The protein encoded by this gene has a long and a short form; generated by use of alternative translational start codons. The long form is expressed in steroidogenic tissues such as testis; where it converts cholesteryl esters to free cholesterol for steroid hormone production. The short form is expressed in adipose tissue; among others; where it hydrolyzes stored triglycerides to free fatty acids.?
Synonyms:	AOMS4; FPLD6; HSL; LHS
Protein Pathways:	Insulin signaling pathway



[View online »](#)

Product images:

Immunohistochemistry of paraffin-embedded Human esophagus cancer tissue using [TA322621] (LIPE Antibody) at dilution 1/10 (Original magnification: $\times 200$)



Immunohistochemistry of paraffin-embedded Human esophagus cancer tissue using [TA322621] (LIPE Antibody) at dilution 1/10, treated with fusion protein. (Original magnification: $\times 200$)