

Product datasheet for **TA322620**

RAB8A Rabbit Polyclonal Antibody

Product data:

Product Type:	Primary Antibodies
Applications:	IHC, WB
Recommended Dilution:	WB: 500-2000 WB positive control: Human cerebella tissue and 293T cell lysates IHC: 50-100 Positive control: Human liver cancer Predicted cell location: Cytoplasm and Cell membrane
Reactivity:	Human, Mouse, Rat
Host:	Rabbit
Isotype:	IgG
Clonality:	Polyclonal
Immunogen:	Synthetic peptide corresponding to a region derived from 173-187 amino acids of Human Ras-related protein Rab-8A
Formulation:	PBS pH7.3, 0.05% NaN ₃ , 50% glycerol
Concentration:	lot specific
Purification:	Antigen affinity purification
Conjugation:	Unconjugated
Storage:	Store at -20°C as received.
Stability:	Stable for 12 months from date of receipt.
Predicted Protein Size:	24 kDa
Gene Name:	RAB8A, member RAS oncogene family
Database Link:	NP_005361 Entrez Gene 17274 Mouse Entrez Gene 117103 Rat Entrez Gene 4218 Human P61006



[View online »](#)

Background:

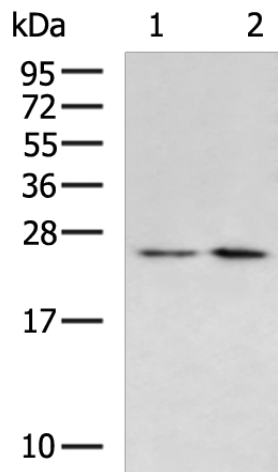
The protein encoded by this gene is a member of the RAS superfamily which are small GTP/GDP-binding proteins with an average size of 200 amino acids. The RAS-related proteins of the RAB/YPT family may play a role in the transport of proteins from the endoplasmic reticulum to the Golgi and the plasma membrane. This protein shares 97%; 96%; and 51% similarity with the dog RAB8; mouse MEL; and mouse YPT1 proteins; respectively and contains the 4 GTP/GDP-binding sites that are present in all the RAS proteins. The putative effector-binding site of this protein is similar to that of the RAB/YPT proteins. However; this protein contains a C-terminal CAAX motif that is characteristic of many RAS superfamily members but which is not found in YPT1 and the majority of RAB proteins. Although this gene was isolated as a transforming gene from a melanoma cell line; no linkage between MEL and malignant melanoma has been demonstrable. This oncogene is located 800 kb distal to MY09B on chromosome 19p13.1.

Synonyms:

MEL; RAB8

Protein Families:

Druggable Genome, Transcription Factors

Product images:

Gel: 12%SDS-PAGE

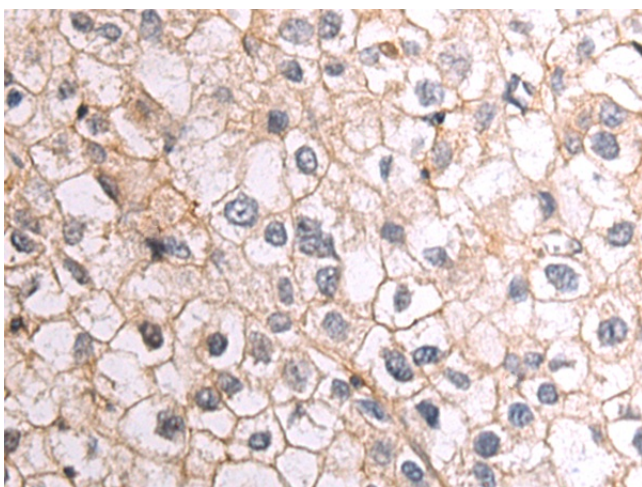
Lysate: 40 µg

Lane 1-2: Human cerebella tissue and 293T cell lysates

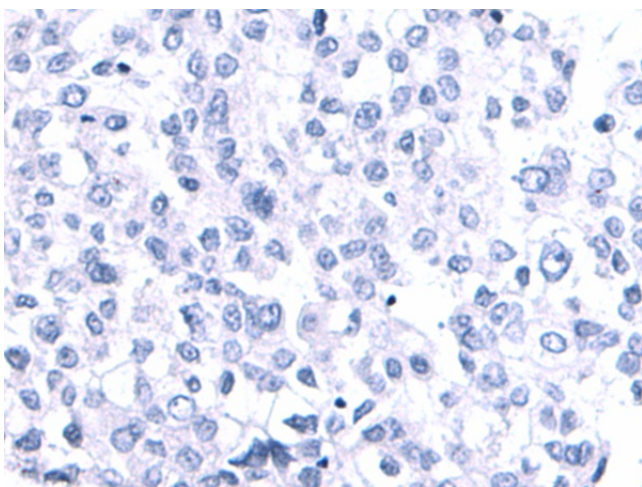
Primary antibody: TA322620 (RAB8A Antibody) at dilution 1/800

Secondary antibody: Goat anti rabbit IgG at 1/5000 dilution

Exposure time: 2 minutes



Immunohistochemistry of paraffin-embedded Human liver cancer tissue using TA322620 (RAB8A Antibody) at dilution 1/50 (Original magnification: $\times 200$)



Immunohistochemistry of paraffin-embedded Human liver cancer tissue using TA322620 (RAB8A Antibody) at dilution 1/50, treated with synthetic peptide. (Original magnification: $\times 200$)