

## Product datasheet for **TA322614**

### **RALA Rabbit Polyclonal Antibody**

#### **Product data:**

<b>Product Type:</b>	Primary Antibodies
<b>Applications:</b>	IHC, WB
<b>Recommended Dilution:</b>	WB: 200-1000 WB positive control: Mouse brain tissue IHC: 15-50 Positive control: Human brain Predicted cell location: Cytoplasm, Cell surface
<b>Reactivity:</b>	Human, Mouse, Rat
<b>Host:</b>	Rabbit
<b>Isotype:</b>	IgG
<b>Clonality:</b>	Polyclonal
<b>Immunogen:</b>	Synthetic peptide corresponding to a region derived from 141-155 amino acids of human v-ral simian leukemia viral oncogene homolog A (ras related)
<b>Formulation:</b>	PBS pH7.3, 0.05% NaN <sub>3</sub> , 50% glycerol
<b>Concentration:</b>	lot specific
<b>Purification:</b>	Antigen affinity purification
<b>Conjugation:</b>	Unconjugated
<b>Storage:</b>	Store at -20°C as received.
<b>Stability:</b>	Stable for 12 months from date of receipt.
<b>Gene Name:</b>	RALA Ras like proto-oncogene A
<b>Database Link:</b>	<a href="#">NP_005393</a> <a href="#">Entrez Gene 56044 Mouse</a> <a href="#">Entrez Gene 81757 Rat</a> <a href="#">Entrez Gene 5898 Human</a> <a href="#">P11233</a>
<b>Background:</b>	The product of this gene belongs to the small GTPase superfamily; Ras family of proteins. GTP-binding proteins mediate the transmembrane signaling initiated by the occupancy of certain cell surface receptors. This gene encodes a low molecular mass ras-like GTP-binding protein that shares about 50% similarity with other ras proteins.
<b>Synonyms:</b>	RAL

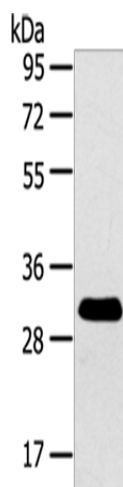


[View online »](#)

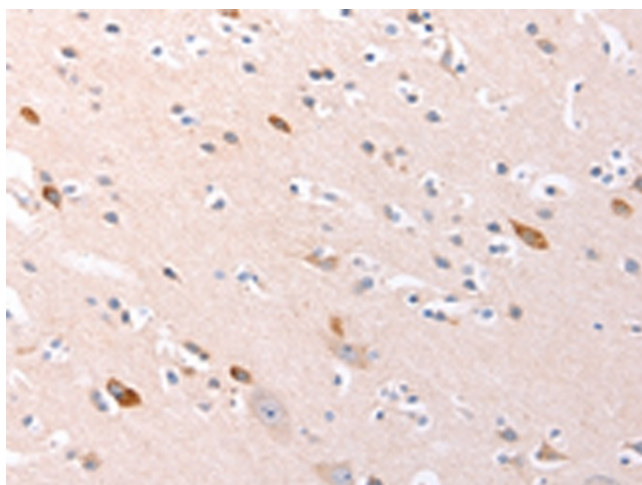
Protein Families: Druggable Genome

Protein Pathways: Pancreatic cancer, Pathways in cancer

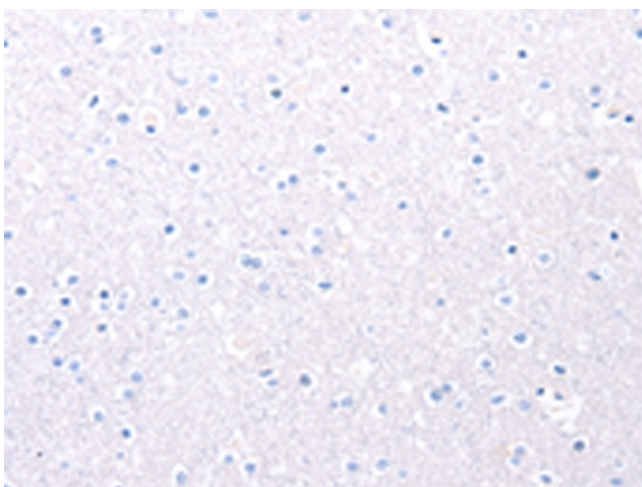
### Product images:



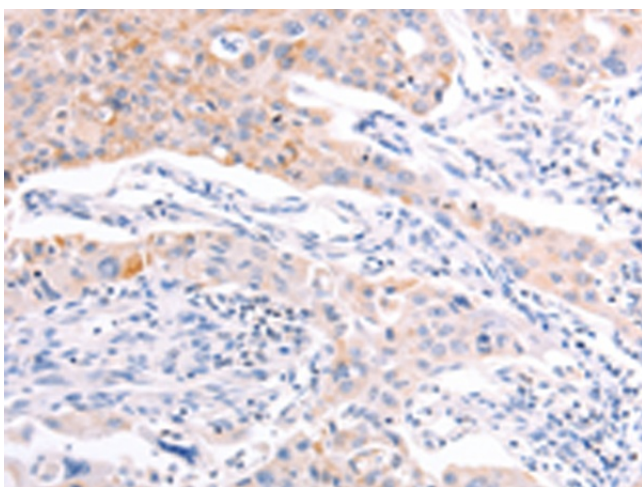
Gel: 8%SDS-PAGE  
Lysate: 40 µg  
Lane: Mouse brain tissue  
Primary antibody: TA322614 (RALA Antibody) at dilution 1/200  
Secondary antibody: Goat anti rabbit IgG at 1/8000 dilution  
Exposure time: 2 minutes



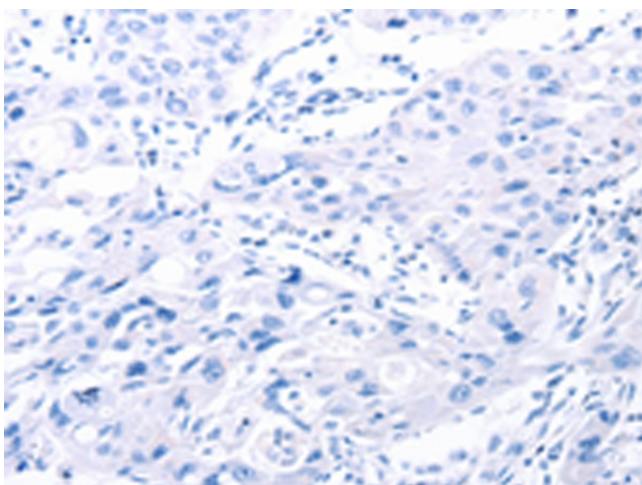
Immunohistochemistry of paraffin-embedded Human brain tissue using TA322614 (RALA Antibody) at dilution 1/20 (Original magnification: ×200)



Immunohistochemistry of paraffin-embedded Human brain tissue using TA322614 (RALA Antibody) at dilution 1/20, treated with synthetic peptide. (Original magnification:  $\times 200$ )



Immunohistochemistry of paraffin-embedded Human lung cancer tissue using TA322614 (RALA Antibody) at dilution 1/20 (Original magnification:  $\times 200$ )



Immunohistochemistry of paraffin-embedded Human lung cancer tissue using TA322614 (RALA Antibody) at dilution 1/20, treated with synthetic peptide. (Original magnification:  $\times 200$ )