

Product datasheet for **TA322605S**

SFTPA1 Rabbit Polyclonal Antibody

Product data:

Product Type:	Primary Antibodies
Applications:	IHC, WB
Recommended Dilution:	WB: 200-1000 WB positive control: Human fetal lung tissue and A549 cells IHC: 50-200 Positive control: Human esophagus cancer Predicted cell location: Cytoplasm
Reactivity:	Human, Rat
Host:	Rabbit
Isotype:	IgG
Clonality:	Polyclonal
Immunogen:	Synthetic peptide corresponding to a region derived from 223-236 amino acids of human surfactant protein A1
Formulation:	PBS pH7.3, 0.05% NaN ₃ , 50% glycerol
Purification:	Antigen affinity purification
Conjugation:	Unconjugated
Storage:	Store at -20°C as received.
Stability:	Stable for 12 months from date of receipt.
Predicted Protein Size:	28 kDa
Gene Name:	surfactant protein A1
Database Link:	NP_005402 Entrez Gene 24773 Rat Entrez Gene 653509 Human Q8IWL2



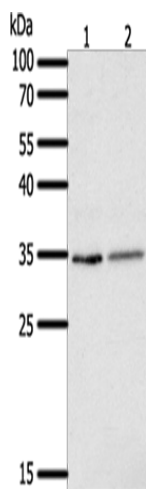
[View online »](#)

Background:

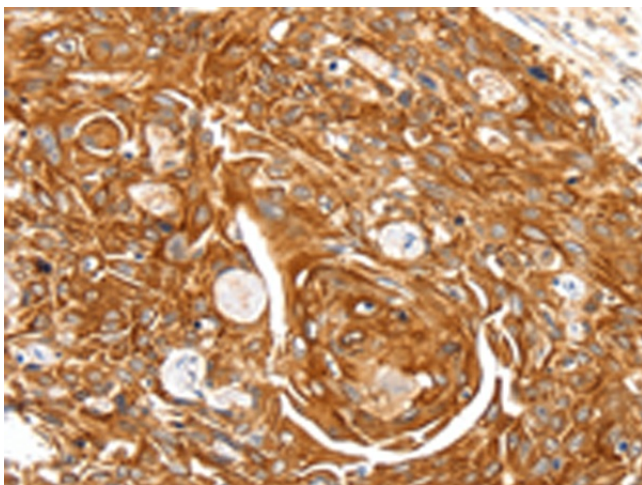
This gene encodes a lung surfactant protein that is a member of a subfamily of C-type lectins called collectins. The encoded protein binds specific carbohydrate moieties found on lipids and on the surface of microorganisms. This protein plays an essential role in surfactant homeostasis and in the defense against respiratory pathogens. Mutations in this gene are associated with idiopathic pulmonary fibrosis. Alternate splicing results in multiple transcript variants.?

Synonyms:

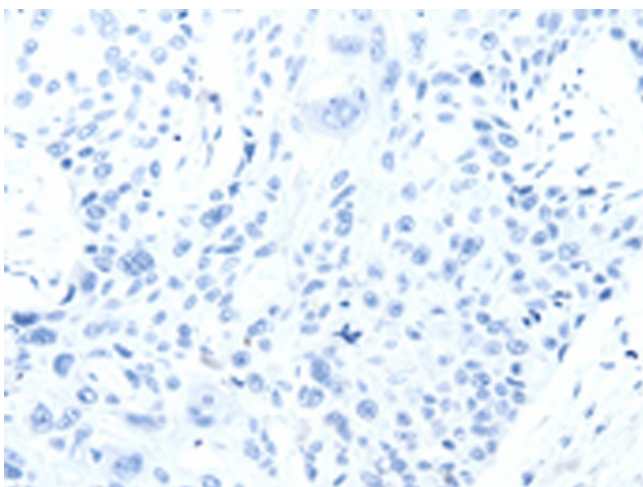
COLEC4; PSAP; PSP-A; PSPA; SFTP1; SFTPA1B; SP-A; SP-A1; SPA; SPA1

Product images:

Gel: 12%SDS-PAGE
Lysate: 50 μ g
Lane 1-2: Human fetal lung tissue
A549 cells
Primary antibody: [TA322605] (SFTPA1 Antibody)
at dilution 1/300
Secondary antibody: Goat anti rabbit IgG at
1/8000 dilution
Exposure time: 1 minute



Immunohistochemistry of paraffin-embedded
Human esophagus cancer tissue using
[TA322605] (SFTPA1 Antibody) at dilution 1/30
(Original magnification: \times 200)



Immunohistochemistry of paraffin-embedded Human esophagus cancer tissue using [TA322605] (SFTP1 Antibody) at dilution 1/30, treated with synthetic peptide. (Original magnification: $\times 200$)