

Product datasheet for **TA322601**

CST8 Rabbit Polyclonal Antibody

Product data:

Product Type:	Primary Antibodies
Applications:	WB
Recommended Dilution:	WB: 1:500-2000
Reactivity:	Human, Mouse, Rat
Host:	Rabbit
Isotype:	IgG
Clonality:	Polyclonal
Immunogen:	Fusion protein corresponding to C terminal 90 amino acids of human cystatin 8 (cystatin-related epididymal specific)
Formulation:	PBS pH7.3, 0.05% NaN ₃ , 50% glycerol
Concentration:	lot specific
Purification:	Antigen affinity purification
Conjugation:	Unconjugated
Storage:	Store at -20°C as received.
Stability:	Stable for 12 months from date of receipt.
Predicted Protein Size:	16 kDa
Gene Name:	cystatin 8
Database Link:	NP_005483 Entrez Gene 13012 Mouse Entrez Gene 29679 Rat Entrez Gene 10047 Human O60676



[View online »](#)

Background:

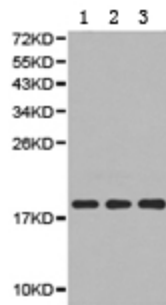
The cystatin superfamily encompasses proteins that contain multiple cystatin-like sequences. Some of the members are active cysteine protease inhibitors, while others have lost or perhaps never acquired this inhibitory activity. There are three inhibitory families in the superfamily, including the type 1 cystatins (stefins), type 2 cystatins and the kininogens. The type 2 cystatin proteins are a class of cysteine proteinase inhibitors found in a variety of human fluids and secretions. The cystatin locus on chromosome 20 contains the majority of the type 2 cystatin genes and pseudogenes. This gene is located in the cystatin locus and encodes a protein similar to type 2 cystatins. The protein exhibits highly tissue-specific expression in the reproductive tract, suggesting implicit roles in reproduction. Alternative splicing identified in mouse is suggested in human based on EST evidence but the full-length nature of putative variants has not been determined.

Synonyms:

CRES; CTE55

Protein Families:

Secreted Protein

Product images:

Predicted band size: 16 kDa. Positive control: Testis tissue, HEK-293 and DU145 cell lysate. Recommended dilution: 1/500-2000. (Gel: 12%SDS-PAGE Lane 1: Testis tissue lysate Lane 2: HEK-293 cell lysate Lane 3: DU145 cell lysate Lysates: 40 ug per lane Primary antibody: 1/500 dilution Secondary antibody: Goat anti Rabbit IgG - H&L (HRP) at 1/10000 dilution Exposure time: 1 minute)