

## Product datasheet for **TA322600**

### ABCA1 Rabbit Polyclonal Antibody

#### Product data:

Product Type:	Primary Antibodies
Applications:	WB
Recommended Dilution:	WB: 1:500-1000
Reactivity:	Human, Mouse, Rat
Host:	Rabbit
Isotype:	IgG
Clonality:	Polyclonal
Immunogen:	Peptide sequence around aa.2253~2257(D-E-K-V-K) derived from Human ABCA1.
Formulation:	PBS pH7.3, 0.05% NaN <sub>3</sub> , 50% glycerol
Concentration:	lot specific
Purification:	Antigen affinity purification
Conjugation:	Unconjugated
Storage:	Store at -20°C as received.
Stability:	Stable for 12 months from date of receipt.
Predicted Protein Size:	254 kDa
Gene Name:	ATP binding cassette subfamily A member 1
Database Link:	<a href="#">NP_005493</a> <a href="#">Entrez Gene 11303 MouseEntrez Gene 313210 RatEntrez Gene 19 Human O95477</a>

**Background:** The membrane-associated protein encoded by this gene is a member of the superfamily of ATP-binding cassette (ABC) transporters. ABC proteins transport various molecules across extra- and intracellular membranes. ABC genes are divided into seven distinct subfamilies (ABC1, MDR/TAP, MRP, ALD, OABP, GCN20, White). This protein is a member of the ABC1 subfamily. Members of the ABC1 subfamily comprise the only major ABC subfamily found exclusively in multicellular eukaryotes. With cholesterol as its substrate, this protein functions as a cholesterol efflux pump in the cellular lipid removal pathway. Mutations in this gene have been associated with Tangier's disease and familial high-density lipoprotein deficiency.

**Synonyms:** ABC-1; ABC1; CERP; HDLDT1; TGD

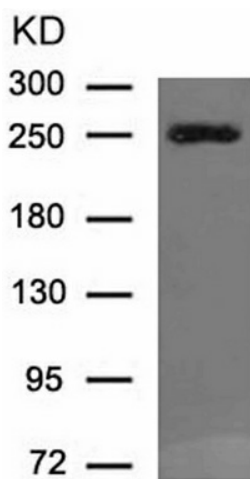


[View online »](#)

Protein Families: Druggable Genome, Transmembrane

Protein Pathways: ABC transporters

### Product images:



Predicted band size: 254 kDa. Positive control: Raw264.7 cells lysate. Recommended dilution: 1/500-1000. (Gel: 8%SDS-PAGE Lysate: 30 ug Primary antibody: 1/500 dilution Secondary antibody: Goat anti Rabbit IgG - H&L (HRP) at 1/10000 dilution Exposure time: 1 minute)