

## Product datasheet for **TA322596S**

### IL12RB1 Rabbit Polyclonal Antibody

#### Product data:

Product Type:	Primary Antibodies
Applications:	IHC
Recommended Dilution:	IHC: 15-50 Positive control: Human esophagus cancer Predicted cell location: Cytoplasm
Reactivity:	Human
Host:	Rabbit
Isotype:	IgG
Clonality:	Polyclonal
Immunogen:	Fusion protein corresponding to a region derived from 24-254 amino acids of human interleukin 12 receptor, beta 1
Formulation:	PBS pH7.3, 0.05% NaN <sub>3</sub> , 50% glycerol
Purification:	Antigen affinity purification
Conjugation:	Unconjugated
Storage:	Store at -20°C as received.
Stability:	Stable for 12 months from date of receipt.
Gene Name:	interleukin 12 receptor subunit beta 1
Database Link:	<a href="#">NP_005526</a> <a href="#">Entrez Gene 3594 Human P42701</a>
Background:	The protein encoded by this gene is a type I transmembrane protein that belongs to the hemopoietin receptor superfamily. This protein binds to interleukine 12 (IL12) with a low affinity, and is thought to be a part of IL12 receptor complex. This protein forms a disulfide-linked oligomer, which is required for its IL12 binding activity. The coexpression of this and IL12RB2 proteins was shown to lead to the formation of high-affinity IL12 binding sites and reconstitution of IL12 dependent signaling. The lack of expression of this gene was found to result in the immunodeficiency of patients with severe mycobacterial and Salmonella infections. Two alternatively spliced transcript variants of this gene encoding distinct isoforms have been reported.

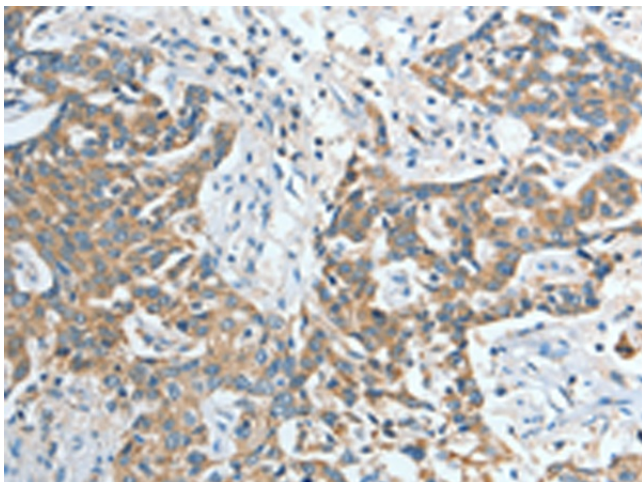


[View online »](#)

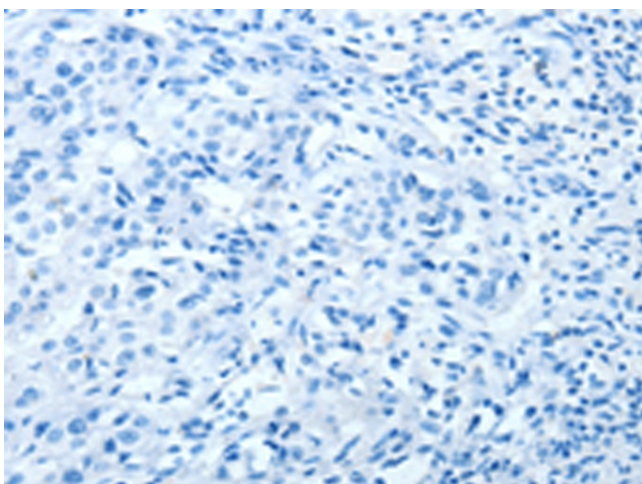
**Synonyms:** CD212; IL-12R-BETA1; IL12RB; IMD30

**Protein Families:** Druggable Genome, Transmembrane

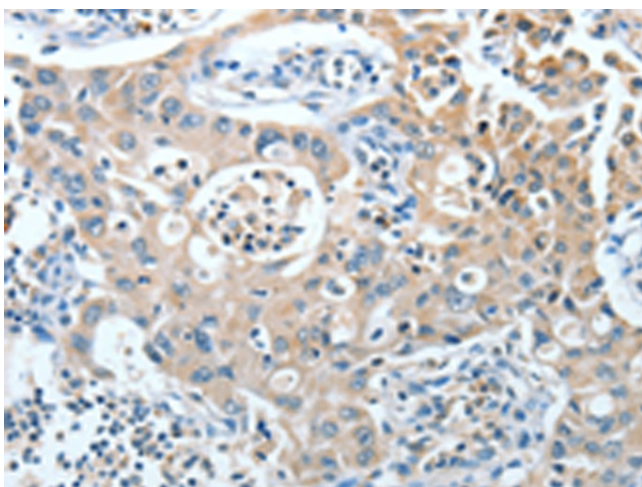
**Protein Pathways:** Cytokine-cytokine receptor interaction, Jak-STAT signaling pathway

**Product images:**

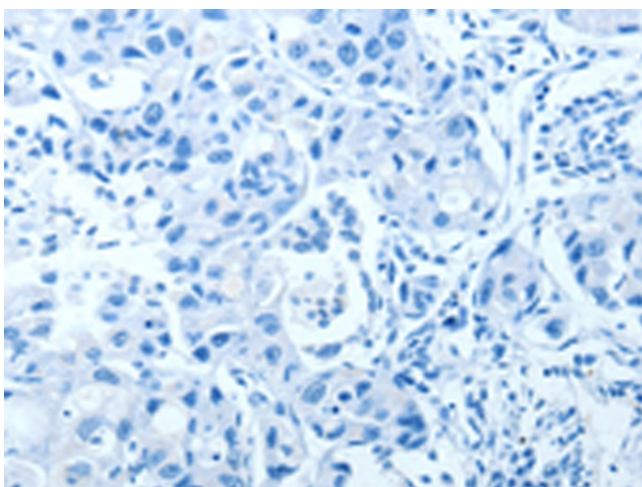
Immunohistochemistry of paraffin-embedded Human esophagus cancer tissue using [TA322596] (IL12RB1 Antibody) at dilution 1/20 (Original magnification:  $\times 200$ )



Immunohistochemistry of paraffin-embedded Human esophagus cancer tissue using [TA322596] (IL12RB1 Antibody) at dilution 1/20, treated with fusion protein. (Original magnification:  $\times 200$ )



Immunohistochemistry of paraffin-embedded Human lung cancer tissue using [TA322596] (IL12RB1 Antibody) at dilution 1/20 (Original magnification:  $\times 200$ )



Immunohistochemistry of paraffin-embedded Human lung cancer tissue using [TA322596] (IL12RB1 Antibody) at dilution 1/20, treated with fusion protein. (Original magnification:  $\times 200$ )