

Product datasheet for **TA322591**

Cytokeratin 6B (KRT6B) Rabbit Polyclonal Antibody

Product data:

Product Type:	Primary Antibodies
Applications:	IHC
Recommended Dilution:	ELISA: 1:2000-5000, IHC: 1:50-200
Reactivity:	Human, Mouse, Rat
Host:	Rabbit
Isotype:	IgG
Clonality:	Polyclonal
Immunogen:	Synthetic peptide corresponding to a region derived from 73-87 amino acids of human keratin 6B
Formulation:	PBS pH7.3, 0.05% NaN ₃ , 50% glycerol
Concentration:	lot specific
Purification:	Antigen affinity purification
Conjugation:	Unconjugated
Storage:	Store at -20°C as received.
Stability:	Stable for 12 months from date of receipt.
Gene Name:	keratin 6B
Database Link:	NP_005546 Entrez Gene 16688 Mouse Entrez Gene 3854 Human P04259

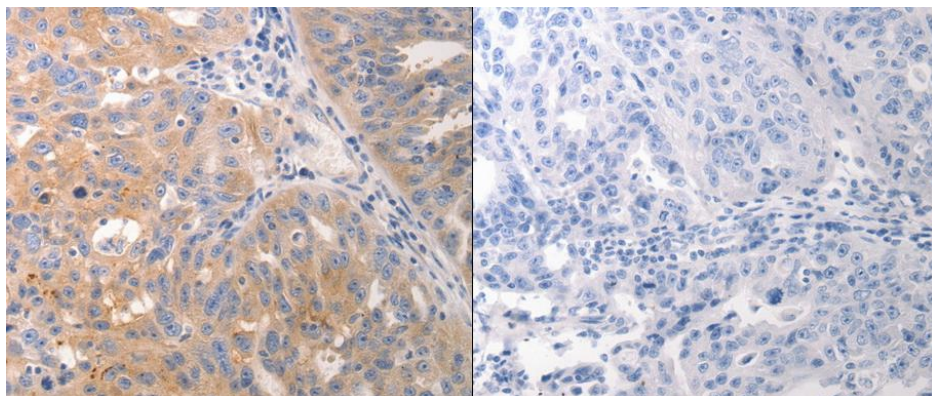
Background: The protein encoded by this gene is a member of the keratin gene family. The type II cytokeratins consist of basic or neutral proteins which are arranged in pairs of heterotypic keratin chains coexpressed during differentiation of simple and stratified epithelial tissues. As many as six of this type II cytokeratin (KRT6) have been identified; the multiplicity of the genes is attributed to successive gene duplication events. The genes are expressed with family members KRT16 and/or KRT17 in the filiform papillae of the tongue; the stratified epithelial lining of oral mucosa and esophagus; the outer root sheath of hair follicles; and the glandular epithelia. Mutations in these genes have been associated with pachyonychia congenita. The type II cytokeratins are clustered in a region of chromosome 12q12-q13.



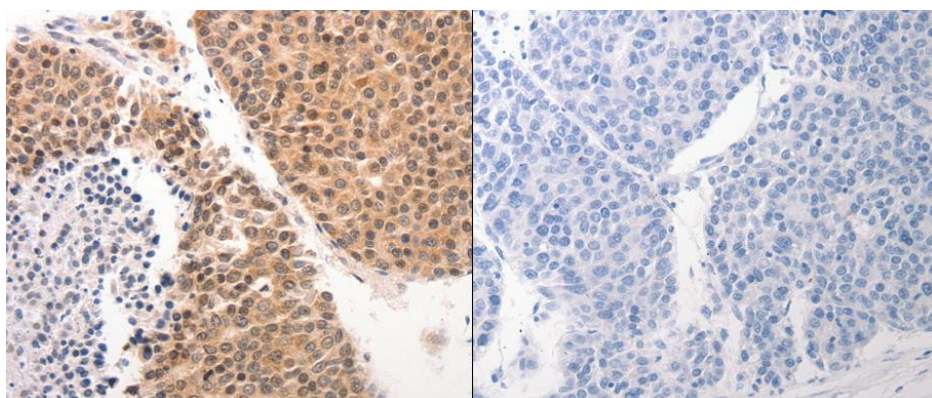
[View online »](#)

Synonyms: CK-6B; CK6B; K6B; KRTL1; PC2; PC4

Product images:



Predicted cell location: Cytoplasm. Positive control: Human ovarian and breast cancer tissue. Recommended dilution: 1/50-200 The image on the left is immunohistochemistry of paraffin-embedded human ovarian cancer tissue using KRT6B antibody at dilution 1/, on the right is treated with the synthetic peptide. (Original magnification:x200)



Predicted cell location: Cytoplasm. Positive control: Human ovarian and breast cancer tissue. Recommended dilution: 1/50-200 The image on the left is immunohistochemistry of paraffin-embedded human breast cancer tissue using KRT6B antibody at dilution 1/, on the right is treated with the synthetic peptide. (Original magnification:x200)