

Product datasheet for **TA322587S**

KRT6A Rabbit Polyclonal Antibody

Product data:

Product Type:	Primary Antibodies
Applications:	IHC
Recommended Dilution:	IHC: 100-300 Positive control: Human cervical cancer Predicted cell location: Cytoplasm and Cell membrane
Reactivity:	Human, Mouse, Rat
Host:	Rabbit
Isotype:	IgG
Clonality:	Polyclonal
Immunogen:	Fusion protein corresponding to a region derived from 163-472 amino acids of Human Keratin, type II cytoskeletal 6A
Formulation:	PBS pH7.3, 0.05% NaN ₃ , 50% glycerol
Purification:	Antigen affinity purification
Conjugation:	Unconjugated
Storage:	Store at -20°C as received.
Stability:	Stable for 12 months from date of receipt.
Gene Name:	keratin 6A
Database Link:	NP_005545 Entrez Gene 16687 Mouse Entrez Gene 3853 Human P02538



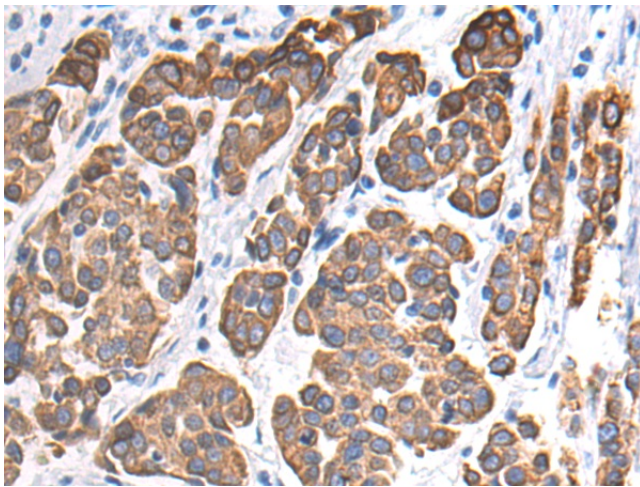
[View online »](#)

Background:

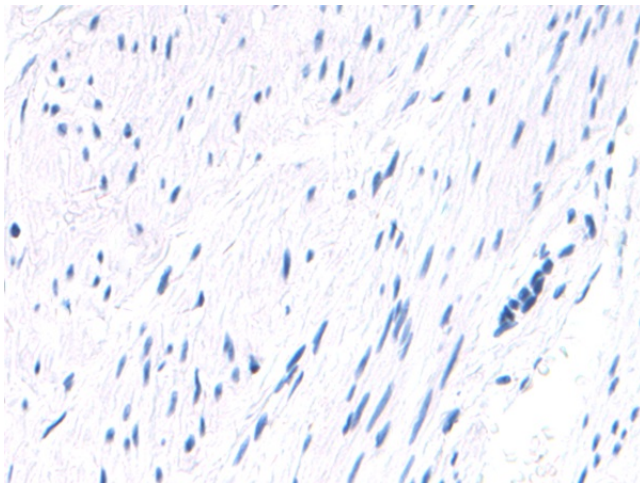
The protein encoded by this gene is a member of the keratin gene family. The type II cytokeratins consist of basic or neutral proteins which are arranged in pairs of heterotypic keratin chains coexpressed during differentiation of simple and stratified epithelial tissues. As many as six of this type II cytokeratin (KRT6) have been identified; the multiplicity of the genes is attributed to successive gene duplication events. The genes are expressed with family members KRT16 and/or KRT17 in the filiform papillae of the tongue; the stratified epithelial lining of oral mucosa and esophagus; the outer root sheath of hair follicles; and the glandular epithelia. This KRT6 gene in particular encodes the most abundant isoform. Mutations in these genes have been associated with pachyonychia congenita. The type II cytokeratins are clustered in a region of chromosome 12q12-q13.

Synonyms:

CK-6C; CK-6E; CK6A; CK6C; CK6D; K6A; K6C; K6D; KRT6C; KRT6D; PC3

Product images:

Immunohistochemistry of paraffin-embedded Human colon cancer tissue using [TA322587] (KRT6A Antibody) at dilution 1/25 (Original magnification: $\times 200$)



Immunohistochemistry of paraffin-embedded Human colon cancer tissue using [TA322587] (KRT6A Antibody) at dilution 1/25, treated with fusion protein. (Original magnification: $\times 200$)