

## Product datasheet for **TA322583**

### NGAL (LCN2) Rabbit Polyclonal Antibody

#### Product data:

Product Type:	Primary Antibodies
Applications:	IHC, WB
Recommended Dilution:	WB: 1000-5000 WB positive control: Human liver cancer tissue IHC: 50-200 Positive control: Human breast cancer Predicted cell location: Cytoplasm
Reactivity:	Human
Host:	Rabbit
Isotype:	IgG
Clonality:	Polyclonal
Immunogen:	Synthetic peptide peptide corresponding to a region derived from 60-73 amino acids of human lipocalin 2
Formulation:	PBS pH7.3, 0.05% NaN <sub>3</sub> , 50% glycerol
Concentration:	lot specific
Purification:	Antigen affinity purification
Conjugation:	Unconjugated
Storage:	Store at -20°C as received.
Stability:	Stable for 12 months from date of receipt.
Predicted Protein Size:	23 kDa
Gene Name:	lipocalin 2
Database Link:	<a href="#">NP_005555</a> <a href="#">Entrez Gene 3934 Human P80188</a>



[View online »](#)

**Background:**

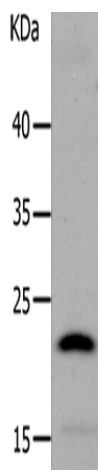
Iron-trafficking protein involved in multiple processes such as apoptosis; innate immunity and renal development. Binds iron through association with 2;5-dihydroxybenzoic acid (2;5-DHBA); a siderophore that shares structural similarities with bacterial enterobactin; and delivers or removes iron from the cell; depending on the context. Iron-bound form (holo-24p3) is internalized following binding to the SLC22A17 (24p3R) receptor; leading to release of iron and subsequent increase of intracellular iron concentration. In contrast; association of the iron-free form (apo-24p3) with the SLC22A17 (24p3R) receptor is followed by association with an intracellular siderophore; iron chelation and iron transfer to the extracellular medium; thereby reducing intracellular iron concentration. Involved in apoptosis due to interleukin-3 (IL3) deprivation: iron-loaded form increases intracellular iron concentration without promoting apoptosis; while iron-free form decreases intracellular iron levels; inducing expression of the proapoptotic protein BCL2L11/BIM; resulting in apoptosis. Involved in innate immunity; possibly by sequestering iron; leading to limit bacterial growth.

**Synonyms:**

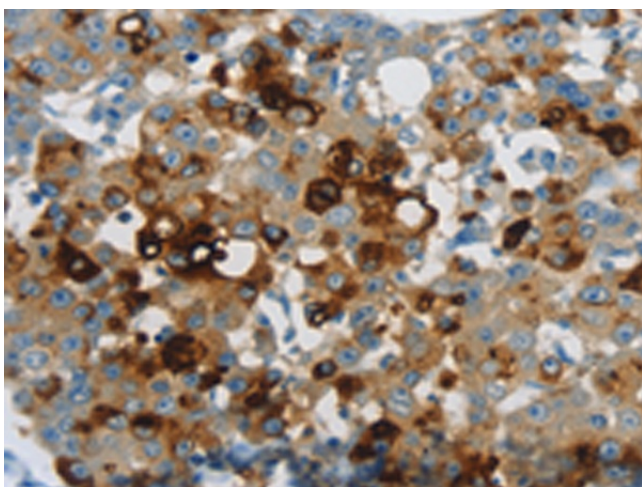
24p3; MSFI; NGAL

**Protein Families:**

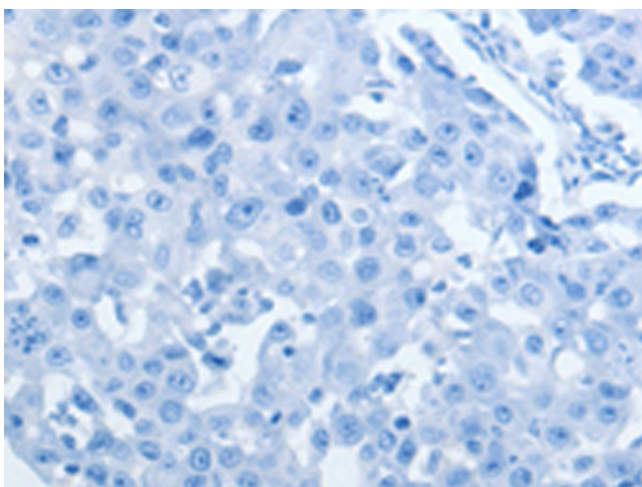
Secreted Protein

**Product images:**

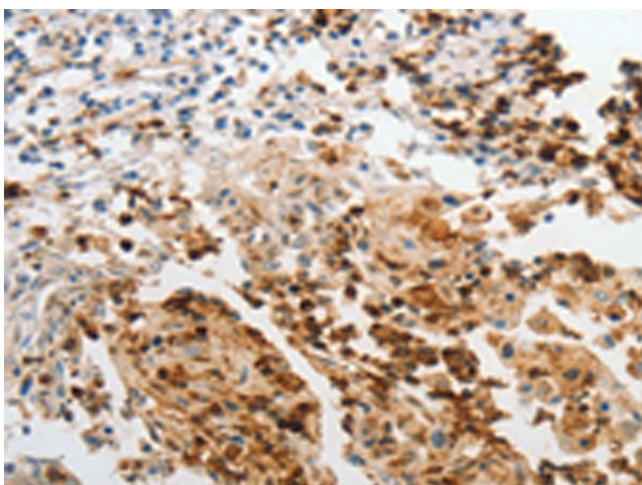
Gel: 10%SDS-PAGE  
Lysate: 40 µg  
Lane: Human liver cancer tissue  
Primary antibody: TA322583 (LCN2 Antibody) at dilution 1/1050  
Secondary antibody: Goat anti rabbit IgG at 1/8000 dilution  
Exposure time: 2 minutes



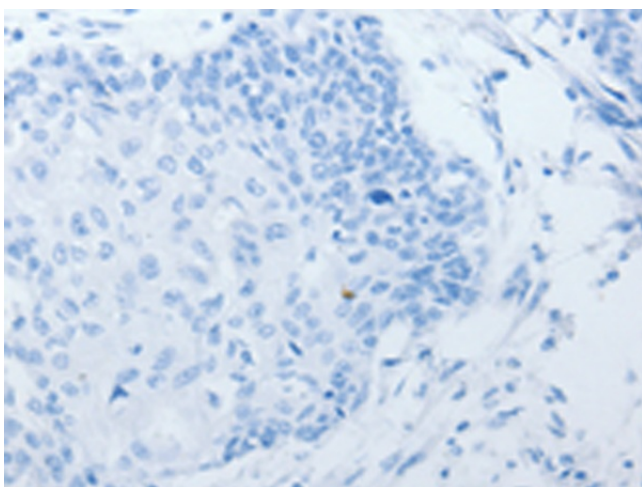
Immunohistochemistry of paraffin-embedded Human breast cancer tissue using TA322583 (LCN2 Antibody) at dilution 1/60 (Original magnification:  $\times 200$ )



Immunohistochemistry of paraffin-embedded Human breast cancer tissue using TA322583 (LCN2 Antibody) at dilution 1/60, treated with synthetic peptide. (Original magnification:  $\times 200$ )



Immunohistochemistry of paraffin-embedded Human cervical cancer tissue using TA322583 (LCN2 Antibody) at dilution 1/60 (Original magnification:  $\times 200$ )



Immunohistochemistry of paraffin-embedded Human cervical cancer tissue using TA322583 (LCN2 Antibody) at dilution 1/60, treated with synthetic peptide. (Original magnification:  $\times 200$ )