

## Product datasheet for **TA322581**

### Laminin alpha 5 (LAMA5) Rabbit Polyclonal Antibody

#### Product data:

Product Type:	Primary Antibodies
Applications:	IHC
Recommended Dilution:	IHC: 10-50 Positive control: Human thyroid cancer Predicted cell location: Cytoplasm, Cell membrane
Reactivity:	Human
Host:	Rabbit
Isotype:	IgG
Clonality:	Polyclonal
Immunogen:	Synthetic peptide corresponding to a region derived from 64-77 amino acids of Human laminin, alpha 5
Formulation:	PBS pH7.3, 0.05% NaN <sub>3</sub> , 50% glycerol
Concentration:	lot specific
Purification:	Antigen affinity purification
Conjugation:	Unconjugated
Storage:	Store at -20°C as received.
Stability:	Stable for 12 months from date of receipt.
Gene Name:	laminin subunit alpha 5
Database Link:	<a href="#">NP_005551</a> <a href="#">Entrez Gene 3911 Human</a> <a href="#">O15230</a>



[View online »](#)

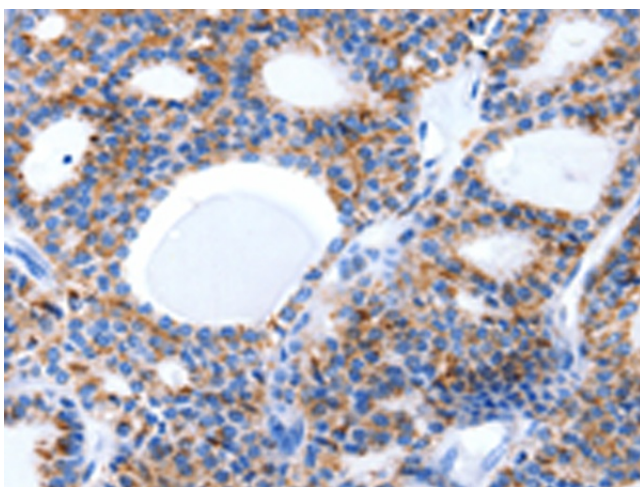
**Background:** Components of the extracellular matrix exert myriad effects on tissues throughout the body. In particular; the laminins; a family of heterotrimeric extracellular glycoproteins; affect tissue development and integrity in such diverse organs as the kidney; lung; skin; and nervous system. It is thought that laminins mediate the attachment; migration; and organization of cells into tissues during embryonic development by interacting with other extracellular matrix components. Laminins function as heterotrimeric complexes of alpha; beta; and gamma chains; with each chain type representing a different subfamily of proteins. The protein encoded by this gene belongs to the alpha subfamily of laminin chains and is a major component of basement membranes. Two transcript variants encoding different isoforms have been found for this gene; but the full-length nature of one of them has not been determined.

**Synonyms:** KIAA1907

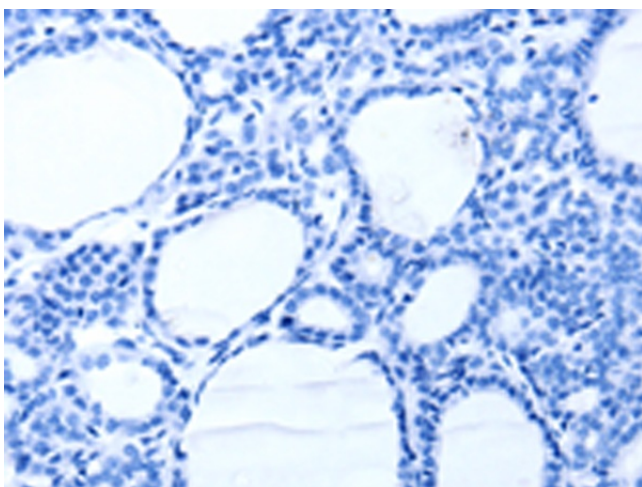
**Protein Families:** Druggable Genome

**Protein Pathways:** ECM-receptor interaction, Focal adhesion, Pathways in cancer, Small cell lung cancer

### Product images:



Immunohistochemistry of paraffin-embedded Human thyroid cancer tissue using TA322581 (LAMA5 Antibody) at dilution 1/8 (Original magnification: ×200)



Immunohistochemistry of paraffin-embedded Human thyroid cancer tissue using TA322581 (LAMA5 Antibody) at dilution 1/8, treated with synthetic peptide. (Original magnification: ×200)