

Product datasheet for **TA322580**

Laminin (LAMA1) Rabbit Polyclonal Antibody

Product data:

| | |
|-----------------------|--|
| Product Type: | Primary Antibodies |
| Applications: | IHC |
| Recommended Dilution: | IHC: 50-200 Positive control: Human brain Predicted cell location: Cytoplasm |
| Reactivity: | Human |
| Host: | Rabbit |
| Isotype: | IgG |
| Clonality: | Polyclonal |
| Immunogen: | Synthetic peptide corresponding to a region derived from 1606-1620 amino acids of Human laminin, alpha 1 |
| Formulation: | PBS pH7.3, 0.05% NaN ₃ , 50% glycerol |
| Concentration: | lot specific |
| Purification: | Antigen affinity purification |
| Conjugation: | Unconjugated |
| Storage: | Store at -20°C as received. |
| Stability: | Stable for 12 months from date of receipt. |
| Gene Name: | laminin subunit alpha 1 |
| Database Link: | NP_005550 Entrez Gene 284217 Human P25391 |



[View online »](#)

Background:

Laminin subunit alpha-1 is a protein that in humans is encoded by the LAMA1 gene. Laminin is a complex glycoprotein; consisting of three different polypeptide chains (alpha; beta; gamma); which are bound to each other by disulfide bonds into a cross-shaped molecule comprising one long and three short arms with globules at each end. Alpha-1 is a subunit of laminin-1 (laminin-111 or EHS laminin) and laminin-3 (laminin-121 or S-laminin). Binding to cells via a high affinity receptor; laminin is thought to mediate the attachment; migration and organization of cells into tissues during embryonic development by interacting with other extracellular matrix components.

Synonyms:

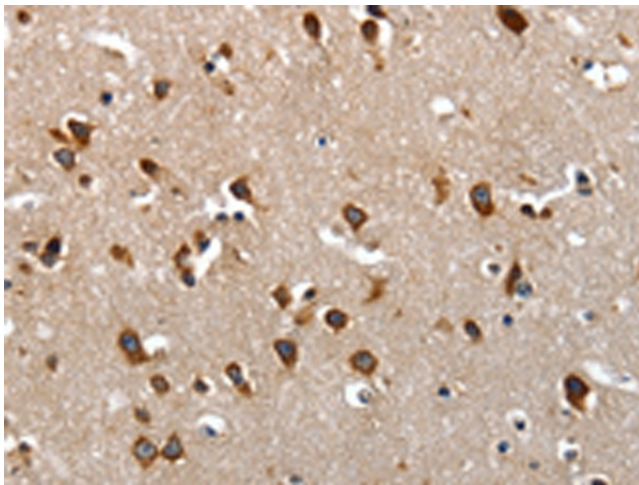
LAMA; PTBHS; S-LAM-alpha

Protein Families:

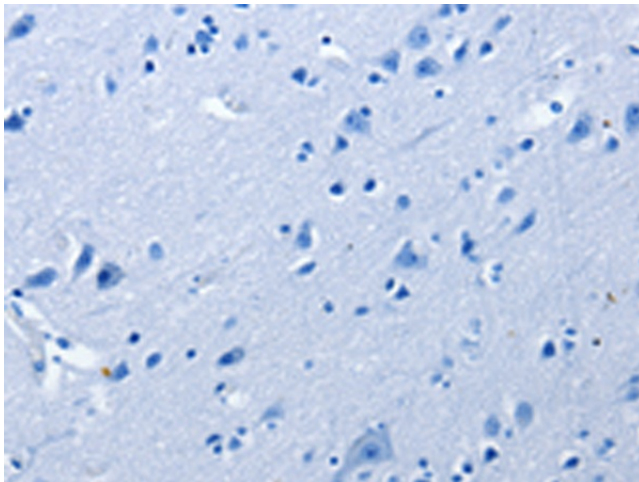
Druggable Genome, ES Cell Differentiation/IPS

Protein Pathways:

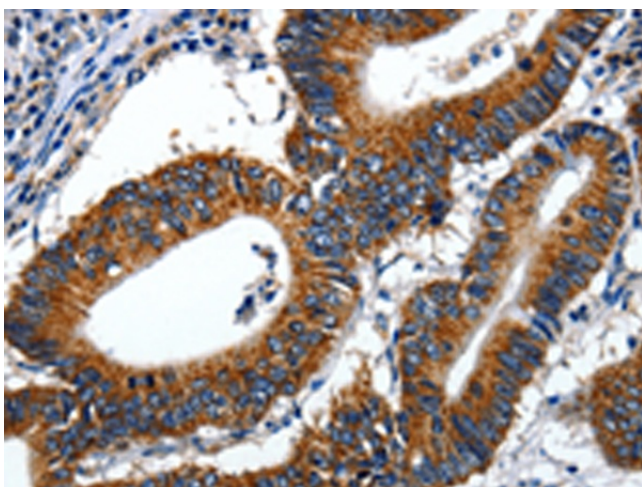
ECM-receptor interaction, Focal adhesion, Pathways in cancer, Small cell lung cancer

Product images:

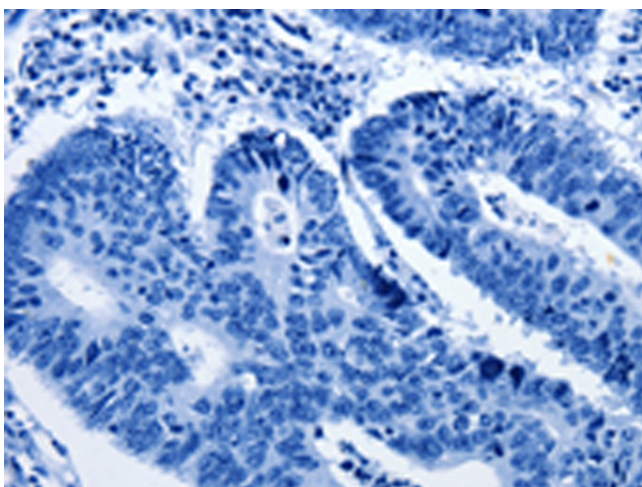
Immunohistochemistry of paraffin-embedded Human brain tissue using TA322580 (LAMA1 Antibody) at dilution 1/70 (Original magnification: ×200)



Immunohistochemistry of paraffin-embedded Human brain tissue using TA322580 (LAMA1 Antibody) at dilution 1/70, treated with synthetic peptide. (Original magnification: ×200)



Immunohistochemistry of paraffin-embedded Human colon cancer tissue using TA322580 (LAMA1 Antibody) at dilution 1/70 (Original magnification: $\times 200$)



Immunohistochemistry of paraffin-embedded Human colon cancer tissue using TA322580 (LAMA1 Antibody) at dilution 1/70, treated with synthetic peptide. (Original magnification: $\times 200$)