

Product datasheet for **TA322579**

Laminin (LAMA1) Rabbit Polyclonal Antibody

Product data:

Product Type:	Primary Antibodies
Applications:	IHC
Recommended Dilution:	IHC: 25-100 Positive control: Human colon cancer Predicted cell location: Cytoplasm
Reactivity:	Human
Host:	Rabbit
Isotype:	IgG
Clonality:	Polyclonal
Immunogen:	Synthetic peptide corresponding to a region derived from 1606-1620 amino acids of Human laminin, alpha 1
Formulation:	PBS pH7.3, 0.05% NaN ₃ , 50% glycerol
Concentration:	lot specific
Purification:	Antigen affinity purification
Conjugation:	Unconjugated
Storage:	Store at -20°C as received.
Stability:	Stable for 12 months from date of receipt.
Gene Name:	laminin subunit alpha 1
Database Link:	NP_005550 Entrez Gene 284217 Human P25391



[View online »](#)

Background:

Laminin subunit alpha-1 is a protein that in humans is encoded by the LAMA1 gene. Laminin is a complex glycoprotein; consisting of three different polypeptide chains (alpha; beta; gamma); which are bound to each other by disulfide bonds into a cross-shaped molecule comprising one long and three short arms with globules at each end. Alpha-1 is a subunit of laminin-1 (laminin-111 or EHS laminin) and laminin-3 (laminin-121 or S-laminin). Binding to cells via a high affinity receptor; laminin is thought to mediate the attachment; migration and organization of cells into tissues during embryonic development by interacting with other extracellular matrix components.

Synonyms:

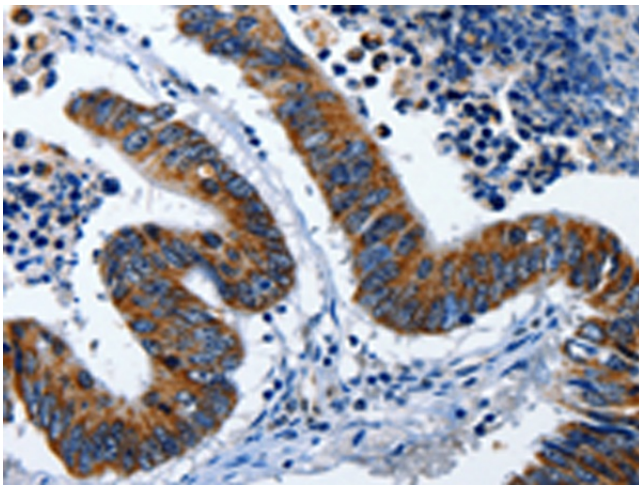
LAMA; PTBHS; S-LAM-alpha

Protein Families:

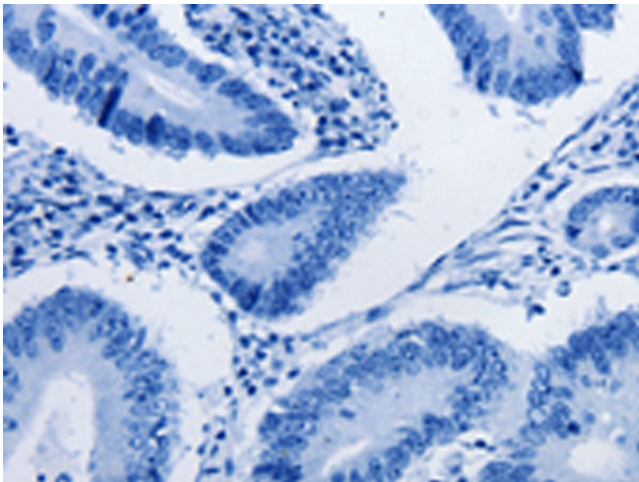
Druggable Genome, ES Cell Differentiation/IPS

Protein Pathways:

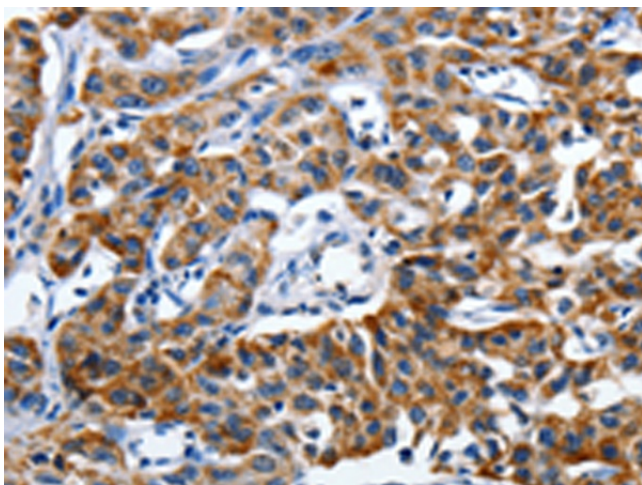
ECM-receptor interaction, Focal adhesion, Pathways in cancer, Small cell lung cancer

Product images:

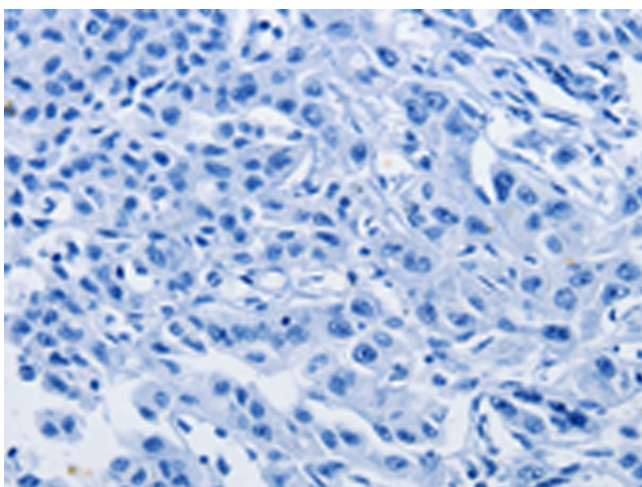
Immunohistochemistry of paraffin-embedded Human colon cancer tissue using TA322579 (LAMA1 Antibody) at dilution 1/25 (Original magnification: $\times 200$)



Immunohistochemistry of paraffin-embedded Human colon cancer tissue using TA322579 (LAMA1 Antibody) at dilution 1/25, treated with synthetic peptide. (Original magnification: $\times 200$)



Immunohistochemistry of paraffin-embedded Human lung cancer tissue using TA322579 (LAMA1 Antibody) at dilution 1/25 (Original magnification: $\times 200$)



Immunohistochemistry of paraffin-embedded Human lung cancer tissue using TA322579 (LAMA1 Antibody) at dilution 1/25, treated with synthetic peptide. (Original magnification: $\times 200$)