

Product datasheet for **TA322577S**

Cytokeratin 16 (KRT16) Rabbit Polyclonal Antibody

Product data:

Product Type:	Primary Antibodies
Applications:	IHC, WB
Recommended Dilution:	WB: 500-2000 WB positive control: Hela cells IHC: 50-200 Positive control: Human colon cancer Predicted cell location: cytoplasm
Reactivity:	Human, Mouse, Rat
Host:	Rabbit
Isotype:	IgG
Clonality:	Polyclonal
Immunogen:	Synthetic peptide corresponding to a region derived from 195-212 amino acids of Human Keratin, type I cytoskeletal 16
Formulation:	PBS pH7.3, 0.05% NaN ₃ , 50% glycerol
Purification:	Antigen affinity purification
Conjugation:	Unconjugated
Storage:	Store at -20°C as received.
Stability:	Stable for 12 months from date of receipt.
Predicted Protein Size:	51 kDa
Gene Name:	keratin 16
Database Link:	NP_005548 Entrez Gene 16666 MouseEntrez Gene 303530 RatEntrez Gene 3868 Human P08779



[View online »](#)

Background:

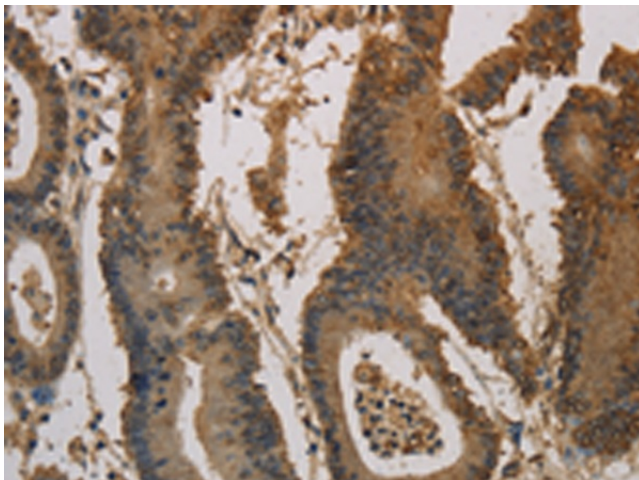
The protein encoded by this gene is a member of the keratin gene family. The keratins are intermediate filament proteins responsible for the structural integrity of epithelial cells and are subdivided into cytokeratins and hair keratins. Most of the type I cytokeratins consist of acidic proteins which are arranged in pairs of heterotypic keratin chains and are clustered in a region of chromosome 17q12-q21. This keratin has been coexpressed with keratin 14 in a number of epithelial tissues; including esophagus; tongue; and hair follicles. Mutations in this gene are associated with type 1 pachyonychia congenita; non-epidermolytic palmoplantar keratoderma and unilateral palmoplantar verrucous nevus.

Synonyms:

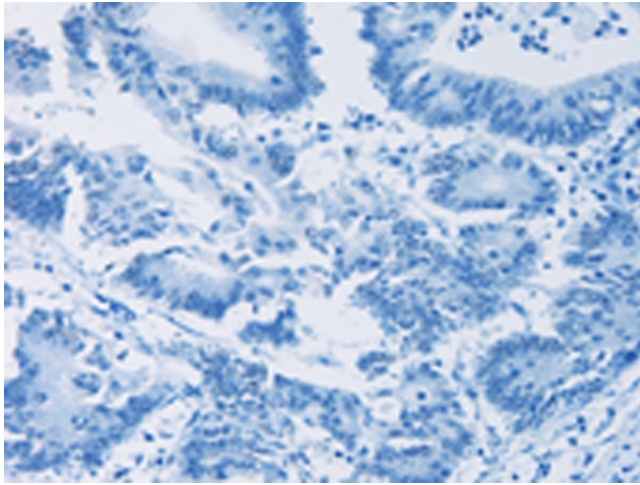
CK16; FNEPPK; K1CP; K16; KRT16A; NEPPK; PC1

Product images:

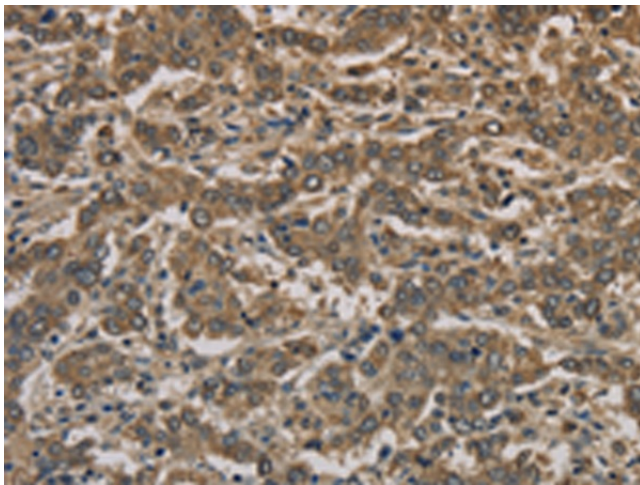

Gel: 8%SDS-PAGE
 Lysate: 40 µg
 Lane: Hela cells
 Primary antibody: [TA322577] (KRT16 Antibody) at dilution 1/350
 Secondary antibody: Goat anti rabbit IgG at 1/8000 dilution
 Exposure time: 20 seconds



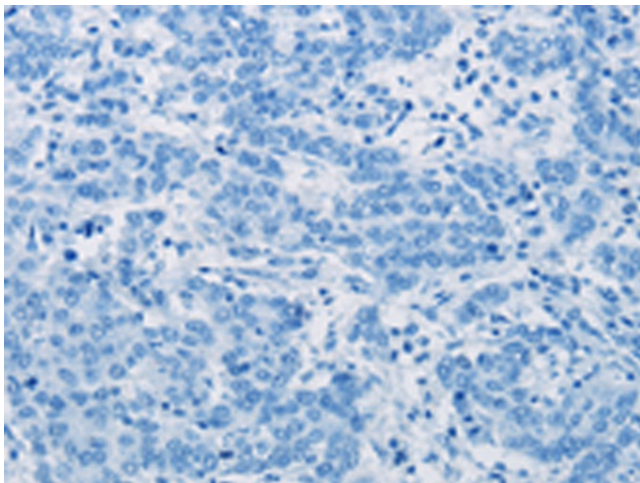
Immunohistochemistry of paraffin-embedded Human colon cancer tissue using [TA322577] (KRT16 Antibody) at dilution 1/30 (Original magnification: ×200)



Immunohistochemistry of paraffin-embedded Human colon cancer tissue using [TA322577] (KRT16 Antibody) at dilution 1/30, treated with synthetic peptide. (Original magnification: ×200)



Immunohistochemistry of paraffin-embedded Human liver cancer tissue using [TA322577] (KRT16 Antibody) at dilution 1/30 (Original magnification: ×200)



Immunohistochemistry of paraffin-embedded Human liver cancer tissue using [TA322577] (KRT16 Antibody) at dilution 1/30, treated with synthetic peptide. (Original magnification: ×200)