

## Product datasheet for **TA322577**

### Cytokeratin 16 (KRT16) Rabbit Polyclonal Antibody

#### Product data:

|                         |  |
|-------------------------|--|
| Product Type:           | Primary Antibodies   |
| Applications:           | IHC, WB  |
| Recommended Dilution:   | WB: 500-2000<br>WB positive control: Hela cells<br>IHC: 50-200<br>Positive control: Human colon cancer<br>Predicted cell location: cytoplasm                                 |
| Reactivity:             | Human, Mouse, Rat  |
| Host:                   | Rabbit   |
| Isotype:                | IgG  |
| Clonality:              | Polyclonal   |
| Immunogen:              | Synthetic peptide corresponding to a region derived from 195-212 amino acids of Human Keratin, type I cytoskeletal 16  |
| Formulation:            | PBS pH7.3, 0.05% NaN <sub>3</sub> , 50% glycerol   |
| Concentration:          | lot specific   |
| Purification:           | Antigen affinity purification  |
| Conjugation:            | Unconjugated   |
| Storage:                | Store at -20°C as received.  |
| Stability:              | Stable for 12 months from date of receipt.   |
| Predicted Protein Size: | 51 kDa   |
| Gene Name:              | keratin 16   |
| Database Link:          | <a href="#">NP_005548</a><br><a href="#">Entrez Gene 16666 Mouse</a> <a href="#">Entrez Gene 303530 Rat</a> <a href="#">Entrez Gene 3868 Human</a><br><a href="#">P08779</a> |



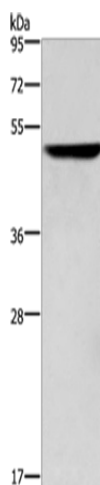
[View online »](#)

**Background:**

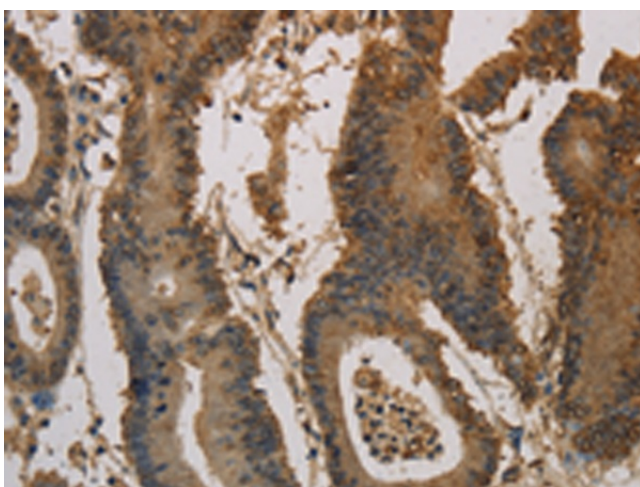
The protein encoded by this gene is a member of the keratin gene family. The keratins are intermediate filament proteins responsible for the structural integrity of epithelial cells and are subdivided into cytokeratins and hair keratins. Most of the type I cytokeratins consist of acidic proteins which are arranged in pairs of heterotypic keratin chains and are clustered in a region of chromosome 17q12-q21. This keratin has been coexpressed with keratin 14 in a number of epithelial tissues; including esophagus; tongue; and hair follicles. Mutations in this gene are associated with type 1 pachyonychia congenita; non-epidermolytic palmoplantar keratoderma and unilateral palmoplantar verrucous nevus.

**Synonyms:**

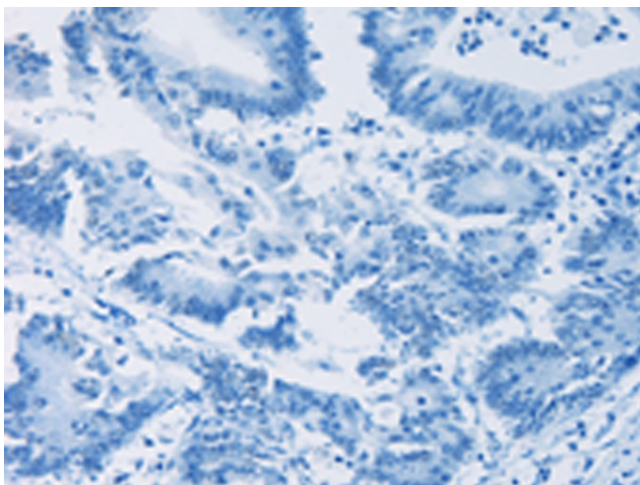
CK16; FNEPPK; K1CP; K16; KRT16A; NEPPK; PC1

**Product images:**

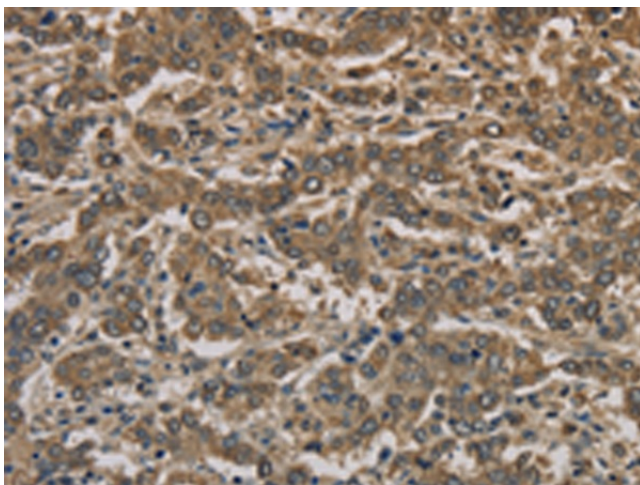
Gel: 8%SDS-PAGE  
Lysate: 40 µg  
Lane: HeLa cells  
Primary antibody: TA322577 (KRT16 Antibody) at dilution 1/350  
Secondary antibody: Goat anti rabbit IgG at 1/8000 dilution  
Exposure time: 20 seconds



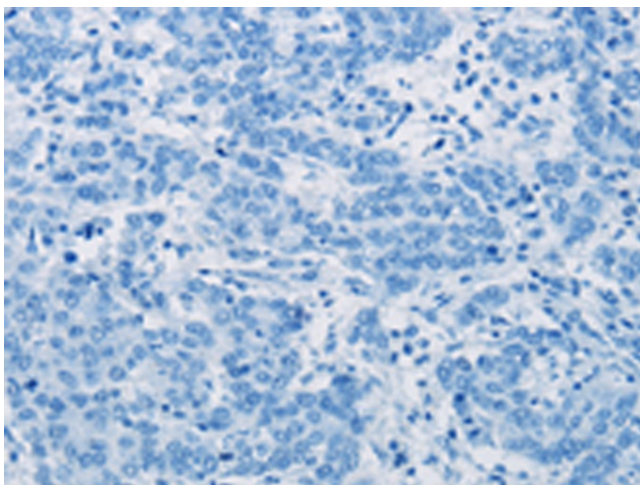
Immunohistochemistry of paraffin-embedded Human colon cancer tissue using TA322577 (KRT16 Antibody) at dilution 1/30 (Original magnification: ×200)



Immunohistochemistry of paraffin-embedded Human colon cancer tissue using TA322577 (KRT16 Antibody) at dilution 1/30, treated with synthetic peptide. (Original magnification: ×200)



Immunohistochemistry of paraffin-embedded Human liver cancer tissue using TA322577 (KRT16 Antibody) at dilution 1/30 (Original magnification: ×200)



Immunohistochemistry of paraffin-embedded Human liver cancer tissue using TA322577 (KRT16 Antibody) at dilution 1/30, treated with synthetic peptide. (Original magnification: ×200)