

Product datasheet for **TA322575**

RHEB Rabbit Polyclonal Antibody

Product data:

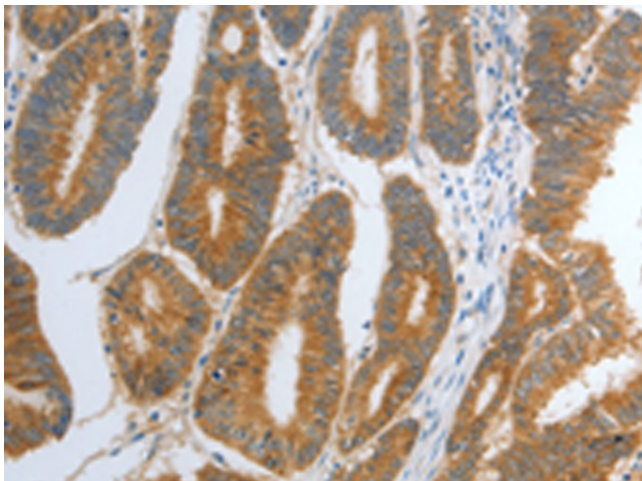
Product Type:	Primary Antibodies
Applications:	IHC
Recommended Dilution:	IHC: 50-200 Positive control: Human colon cancer Predicted cell location: Cytoplasm
Reactivity:	Human, Mouse, Rat
Host:	Rabbit
Isotype:	IgG
Clonality:	Polyclonal
Immunogen:	Synthetic peptide corresponding to a region derived from 150-162 amino acids of Human Ras homolog enriched in brain
Formulation:	PBS pH7.3, 0.05% NaN ₃ , 50% glycerol
Concentration:	lot specific
Purification:	Antigen affinity purification
Conjugation:	Unconjugated
Storage:	Store at -20°C as received.
Stability:	Stable for 12 months from date of receipt.
Gene Name:	Ras homolog enriched in brain
Database Link:	NP_005605 Entrez Gene 19744 Mouse Entrez Gene 26954 Rat Entrez Gene 6009 Human Q15382
Background:	This gene is a member of the small GTPase superfamily and encodes a lipid-anchored; cell membrane protein with five repeats of the RAS-related GTP-binding region. This protein is vital in regulation of growth and cell cycle progression due to its role in the insulin/TOR/S6K signaling pathway. The protein has GTPase activity and shuttles between a GDP-bound form and a GTP-bound form; and farnesylation of the protein is required for this activity. Three pseudogenes have been mapped; two on chromosome 10 and one on chromosome 22.
Synonyms:	RHEB2



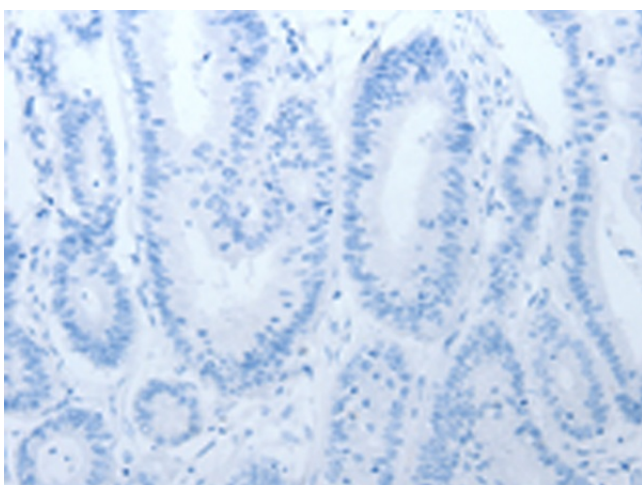
[View online »](#)

Protein Pathways: Insulin signaling pathway, mTOR signaling pathway

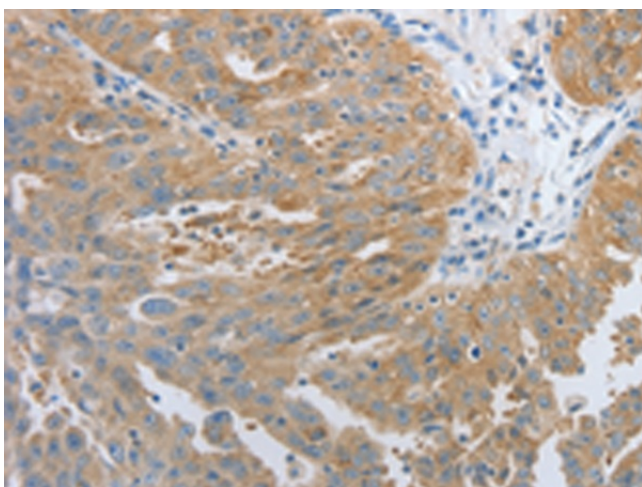
Product images:



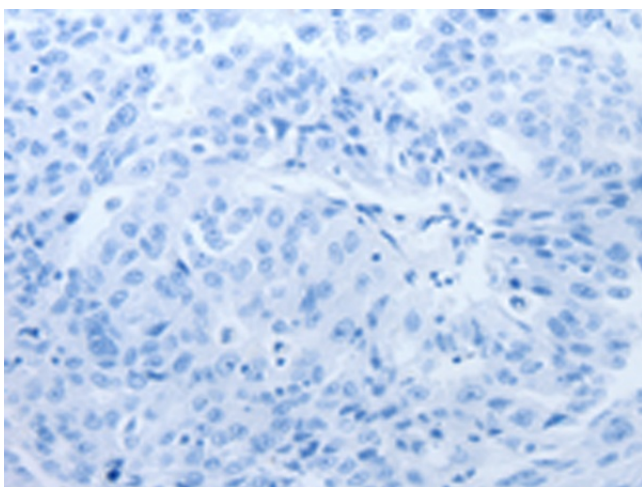
Immunohistochemistry of paraffin-embedded Human colon cancer tissue using TA322575 (RHEB Antibody) at dilution 1/30 (Original magnification: $\times 200$)



Immunohistochemistry of paraffin-embedded Human colon cancer tissue using TA322575 (RHEB Antibody) at dilution 1/30, treated with synthetic peptide. (Original magnification: $\times 200$)



Immunohistochemistry of paraffin-embedded Human ovarian cancer tissue using TA322575 (RHEB Antibody) at dilution 1/30 (Original magnification: ×200)



Immunohistochemistry of paraffin-embedded Human ovarian cancer tissue using TA322575 (RHEB Antibody) at dilution 1/30, treated with synthetic peptide. (Original magnification: ×200)