

## Product datasheet for **TA322573**

### Smoothened (SMO) Rabbit Polyclonal Antibody

#### Product data:

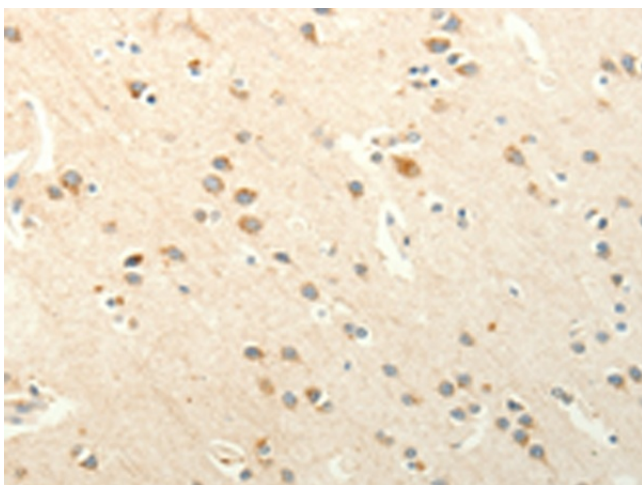
Product Type:	Primary Antibodies
Applications:	IHC
Recommended Dilution:	IHC: 25-100 Positive control: Human brain Predicted cell location: Cytoplasm
Reactivity:	Human, Rat
Host:	Rabbit
Isotype:	IgG
Clonality:	Polyclonal
Immunogen:	Synthetic peptide corresponding to a region derived from 772-787 amino acids of human smoothened, frizzled family receptor
Formulation:	PBS pH7.3, 0.05% NaN <sub>3</sub> , 50% glycerol
Concentration:	lot specific
Purification:	Antigen affinity purification
Conjugation:	Unconjugated
Storage:	Store at -20°C as received.
Stability:	Stable for 12 months from date of receipt.
Gene Name:	smoothened, frizzled class receptor
Database Link:	<a href="#">NP_005622</a> <a href="#">Entrez Gene 25273 Rat</a> <a href="#">Entrez Gene 6608 Human</a> <a href="#">Q99835</a>
Background:	The protein encoded by this gene is a G protein-coupled receptor that interacts with the patched protein; a receptor for hedgehog proteins. The encoded protein transduces signals to other proteins after activation by a hedgehog protein/patched protein complex.
Synonyms:	FZD11; Gx; SMOH
Protein Families:	Druggable Genome, ES Cell Differentiation/IPS, Stem cell relevant signaling - DSL/Notch pathway, Transmembrane



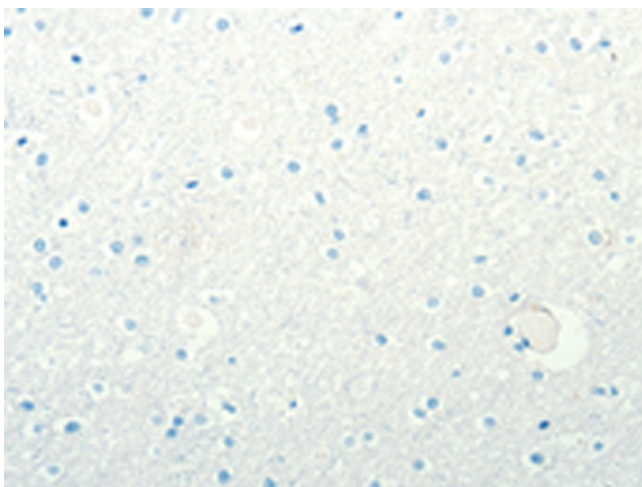
[View online »](#)

Protein Pathways: Basal cell carcinoma, Hedgehog signaling pathway, Pathways in cancer

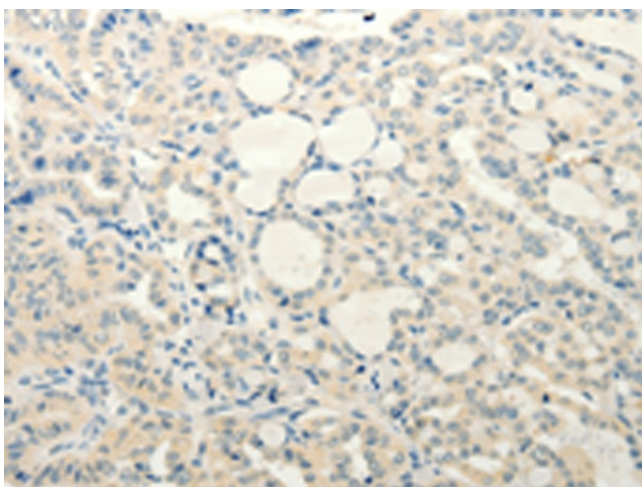
**Product images:**



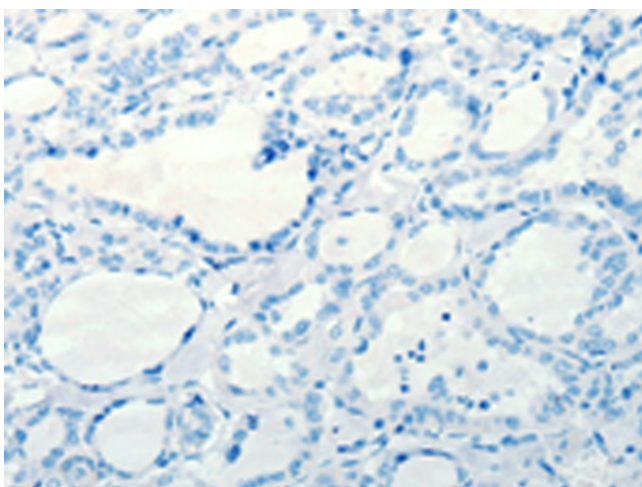
Immunohistochemistry of paraffin-embedded Human brain tissue using TA322573 (SMO Antibody) at dilution 1/20 (Original magnification: ×200)



Immunohistochemistry of paraffin-embedded Human brain tissue using TA322573 (SMO Antibody) at dilution 1/20, treated with synthetic peptide. (Original magnification: ×200)



Immunohistochemistry of paraffin-embedded Human thyroid cancer tissue using TA322573 (SMO Antibody) at dilution 1/20 (Original magnification:  $\times 200$ )



Immunohistochemistry of paraffin-embedded Human thyroid cancer tissue using TA322573 (SMO Antibody) at dilution 1/20, treated with synthetic peptide. (Original magnification:  $\times 200$ )