

## Product datasheet for **TA322571**

### TRF2 (TERF2) Rabbit Polyclonal Antibody

#### Product data:

Product Type:	Primary Antibodies
Applications:	IHC
Recommended Dilution:	IHC: 50-200 Positive control: Human colon cancer Predicted cell location: Cytoplasm, Nucleus
Reactivity:	Human
Host:	Rabbit
Isotype:	IgG
Clonality:	Polyclonal
Immunogen:	Synthetic peptide corresponding to a region derived from 327-340 amino acids of human telomeric repeat binding factor 2
Formulation:	PBS pH7.3, 0.05% NaN <sub>3</sub> , 50% glycerol
Concentration:	lot specific
Purification:	Antigen affinity purification
Conjugation:	Unconjugated
Storage:	Store at -20°C as received.
Stability:	Stable for 12 months from date of receipt.
Gene Name:	telomeric repeat binding factor 2
Database Link:	<a href="#">NP_005643</a> <a href="#">Entrez Gene 7014 Human</a> <a href="#">Q15554</a>

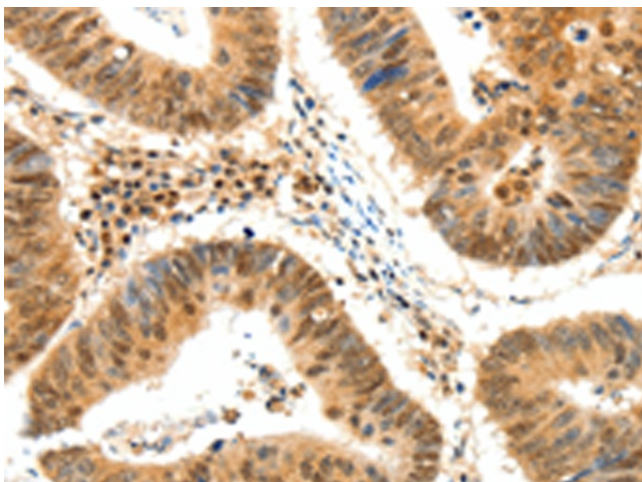
**Background:** This gene encodes a telomere specific protein; TERF2; which is a component of the telomere nucleoprotein complex. This protein is present at telomeres in metaphase of the cell cycle; is a second negative regulator of telomere length and plays a key role in the protective activity of telomeres. While having similar telomere binding activity and domain organization; TERF2 differs from TERF1 in that its N terminus is basic rather than acidic.

**Synonyms:** TRBF2; TRF2

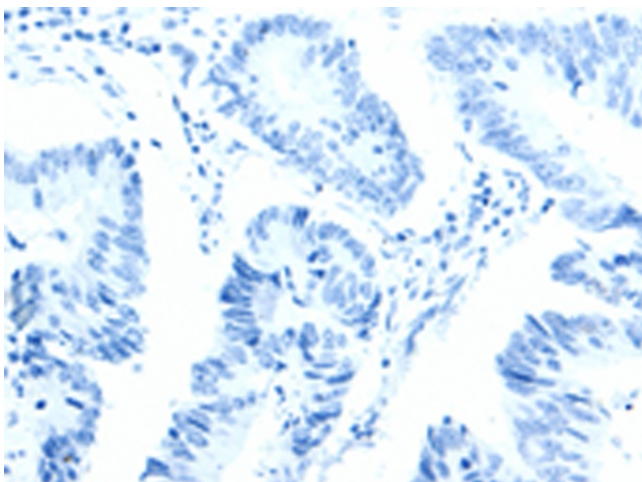
**Protein Families:** Transcription Factors



[View online »](#)

**Product images:**

Immunohistochemistry of paraffin-embedded Human colon cancer tissue using TA322571 (TERF2 Antibody) at dilution 1/50 (Original magnification:  $\times 200$ )



Immunohistochemistry of paraffin-embedded Human colon cancer tissue using TA322571 (TERF2 Antibody) at dilution 1/50, treated with synthetic peptide. (Original magnification:  $\times 200$ )