

## Product datasheet for **TA322567**

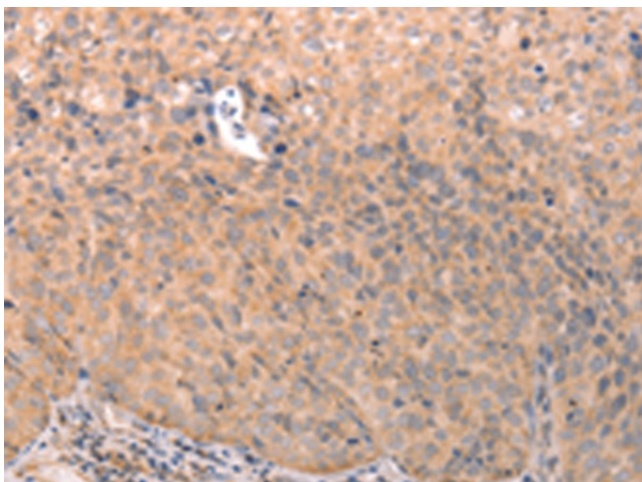
### ABCF2 Rabbit Polyclonal Antibody

#### Product data:

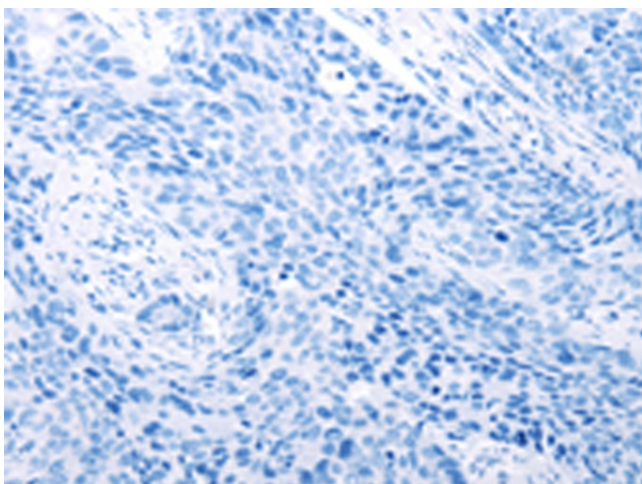
Product Type:	Primary Antibodies
Applications:	IHC
Recommended Dilution:	IHC: 25-100 Positive control: Human cervical cancer Predicted cell location: Cytoplasm
Reactivity:	Human, Mouse
Host:	Rabbit
Isotype:	IgG
Clonality:	Polyclonal
Immunogen:	Fusion protein corresponding to a region derived from 396-613 amino acids of human ATP-binding cassette, sub-family F (GCN20), member 2
Formulation:	PBS pH7.3, 0.05% NaN <sub>3</sub> , 50% glycerol
Concentration:	lot specific
Purification:	Antigen affinity purification
Conjugation:	Unconjugated
Storage:	Store at -20°C as received.
Stability:	Stable for 12 months from date of receipt.
Gene Name:	ATP binding cassette subfamily F member 2
Database Link:	<a href="#">NP_005683</a> <a href="#">Entrez Gene 114483834 Human</a> <a href="#">Entrez Gene 10061 Human</a> <a href="#">Q9UG63</a>
Background:	The protein encoded by this gene is a member of the superfamily of ATP-binding cassette (ABC) transporters. ABC proteins transport various molecules across extra- and intracellular membranes. ABC genes are divided into seven distinct subfamilies (ABC1; MDR/TAP; MRP; ALD; OABP; GCN20; and White). This protein is a member of the GCN20 subfamily. Alternative splicing of this gene results in multiple transcript variants.
Synonyms:	ABC28; EST133090; HUSSY-18; HUSSY18



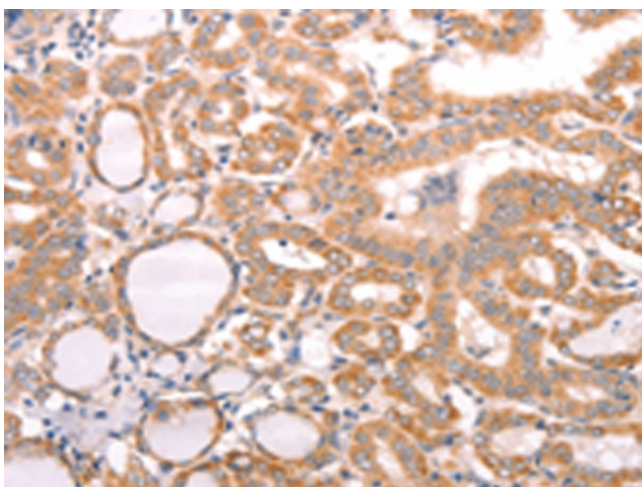
[View online »](#)

**Product images:**

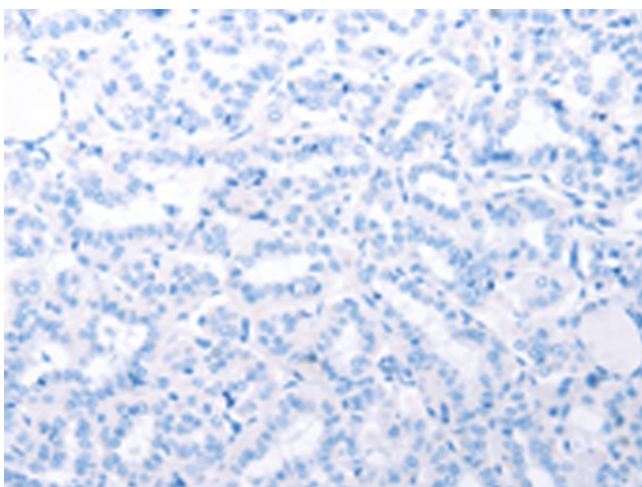
Immunohistochemistry of paraffin-embedded Human cervical cancer tissue using TA322567 (ABCF2 Antibody) at dilution 1/15 (Original magnification:  $\times 200$ )



Immunohistochemistry of paraffin-embedded Human cervical cancer tissue using TA322567 (ABCF2 Antibody) at dilution 1/15, treated with fusion protein. (Original magnification:  $\times 200$ )



Immunohistochemistry of paraffin-embedded Human thyroid cancer tissue using TA322567 (ABCF2 Antibody) at dilution 1/15 (Original magnification:  $\times 200$ )



Immunohistochemistry of paraffin-embedded Human thyroid cancer tissue using TA322567 (ABCF2 Antibody) at dilution 1/15, treated with fusion protein. (Original magnification:  $\times 200$ )