

## Product datasheet for **TA322566S**

### ABCB6 Rabbit Polyclonal Antibody

#### Product data:

|                         |                                                                                                                                                                               |
|-------------------------|-------------------------------------------------------------------------------------------------------------------------------------------------------------------------------|
| Product Type:           | Primary Antibodies                                                                                                                                                            |
| Applications:           | IHC, WB                                                                                                                                                                       |
| Recommended Dilution:   | WB: 500-2000<br>WB positive control: Hela cell lysate<br>IHC: 50-200<br>Positive control: Human liver cancer<br>Predicted cell location: Cytoplasm                            |
| Reactivity:             | Human, Mouse, Rat                                                                                                                                                             |
| Host:                   | Rabbit                                                                                                                                                                        |
| Isotype:                | IgG                                                                                                                                                                           |
| Clonality:              | Polyclonal                                                                                                                                                                    |
| Immunogen:              | Fusion protein corresponding to a region derived from 590-824 amino acids of human ATP-binding cassette, sub-family B (MDR/TAP), member 6                                     |
| Formulation:            | PBS pH7.3, 0.05% NaN <sub>3</sub> , 50% glycerol                                                                                                                              |
| Purification:           | Antigen affinity purification                                                                                                                                                 |
| Conjugation:            | Unconjugated                                                                                                                                                                  |
| Storage:                | Store at -20°C as received.                                                                                                                                                   |
| Stability:              | Stable for 12 months from date of receipt.                                                                                                                                    |
| Predicted Protein Size: | 94 kDa                                                                                                                                                                        |
| Gene Name:              | ATP binding cassette subfamily B member 6 (Langereis blood group)                                                                                                             |
| Database Link:          | <a href="#">NP_005680</a><br><a href="#">Entrez Gene 74104 Mouse</a> <a href="#">Entrez Gene 140669 Rat</a> <a href="#">Entrez Gene 10058 Human</a><br><a href="#">Q9NP58</a> |



[View online »](#)

**Background:**

The membrane-associated protein encoded by this gene is a member of the superfamily of ATP-binding cassette (ABC) transporters. ABC proteins transport various molecules across extra- and intra-cellular membranes. ABC genes are divided into seven distinct subfamilies (ABC1; MDR/TAP; MRP; ALD; OABP; GCN20; White). This protein is a member of the MDR/TAP subfamily. Members of the MDR/TAP subfamily are involved in multidrug resistance as well as antigen presentation. This half-transporter likely plays a role in mitochondrial function. Localized to 2q26; this gene is considered a candidate gene for lethal neonatal metabolic syndrome; a disorder of mitochondrial function.

**Synonyms:**

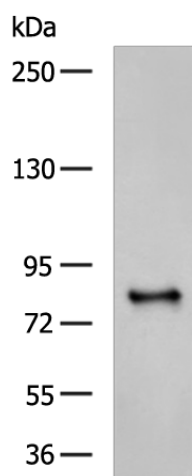
ABC; ABC14; DUH3; LAN; MCOPCB7; MTABC3; PRP; umat

**Protein Families:**

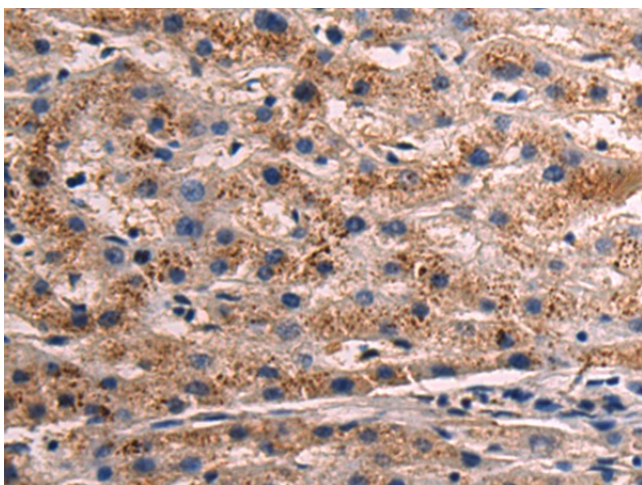
Druggable Genome, Transmembrane

**Protein Pathways:**

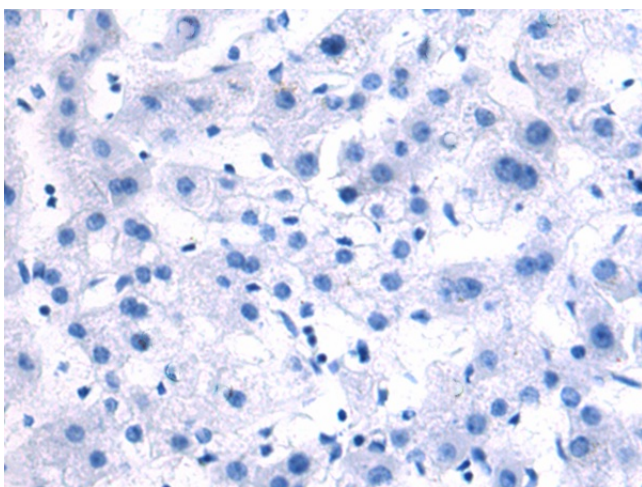
ABC transporters

**Product images:**

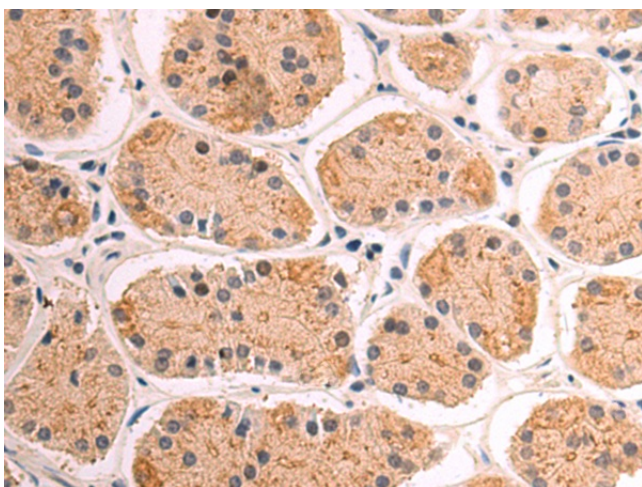
Gel: 6%SDS-PAGE  
Lysate: 40 µg  
Lane: HeLa cell lysate  
Primary antibody: [TA322566] (ABCB6 Antibody) at dilution 1/400  
Secondary antibody: Goat anti rabbit IgG at 1/5000 dilution  
Exposure time: 90 seconds



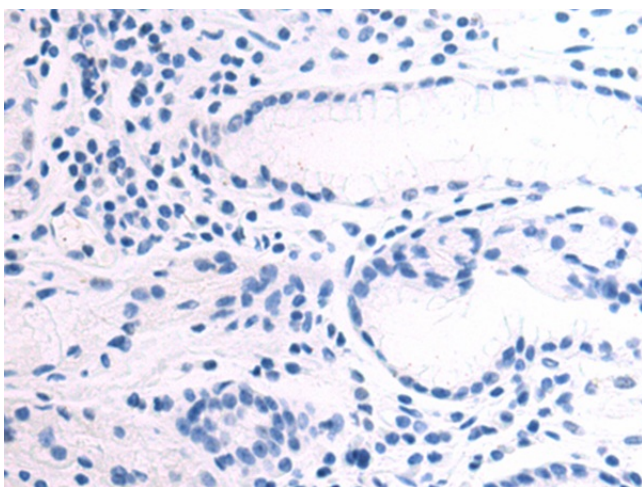
Immunohistochemistry of paraffin-embedded Human liver cancer tissue using [TA322566] (ABCB6 Antibody) at dilution 1/60 (Original magnification: x200)



Immunohistochemistry of paraffin-embedded Human liver cancer tissue using [TA322566] (ABCB6 Antibody) at dilution 1/60, treated with fusion protein. (Original magnification:  $\times 200$ )



Immunohistochemistry of paraffin-embedded Human esophagus cancer tissue using [TA322566] (ABCB6 Antibody) at dilution 1/60 (Original magnification:  $\times 200$ )



Immunohistochemistry of paraffin-embedded Human esophagus cancer tissue using [TA322566] (ABCB6 Antibody) at dilution 1/60, treated with fusion protein. (Original magnification:  $\times 200$ )