

Product datasheet for **TA322562**

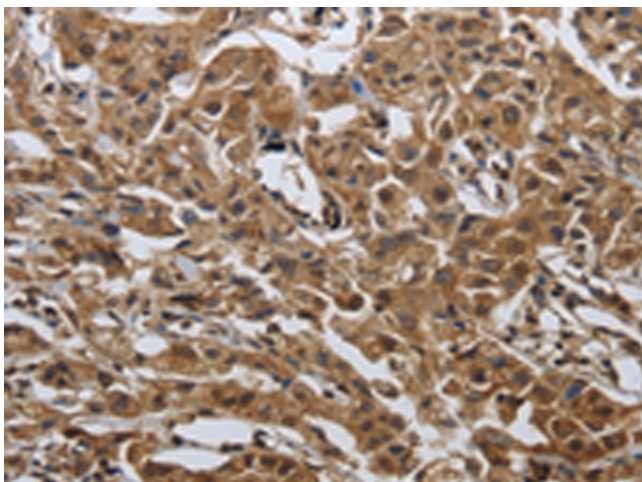
PDCD7 Rabbit Polyclonal Antibody

Product data:

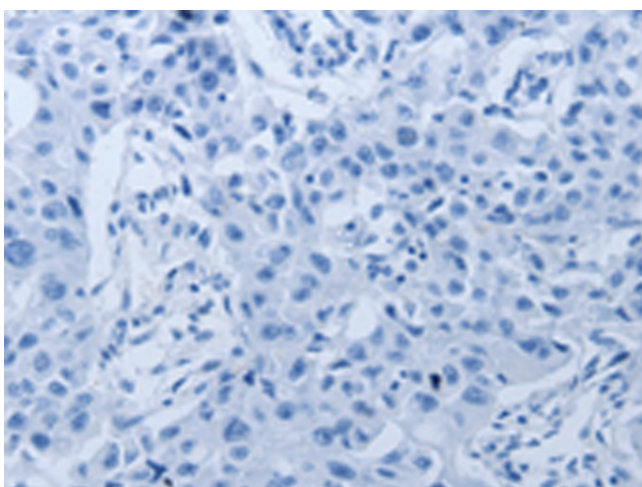
Product Type:	Primary Antibodies
Applications:	IHC
Recommended Dilution:	IHC: 50-200 Positive control: Human lung cancer Predicted cell location: Cytoplasm, Nucleus
Reactivity:	Human, Mouse
Host:	Rabbit
Isotype:	IgG
Clonality:	Polyclonal
Immunogen:	Synthetic peptide corresponding to a region derived from 402-416 amino acids of Human programmed cell death 7
Formulation:	PBS pH7.3, 0.05% NaN ₃ , 50% glycerol
Concentration:	lot specific
Purification:	Antigen affinity purification
Conjugation:	Unconjugated
Storage:	Store at -20°C as received.
Stability:	Stable for 12 months from date of receipt.
Gene Name:	programmed cell death 7
Database Link:	NP_005698 Entrez Gene 50996 Mouse Entrez Gene 10081 Human Q8N8D1
Background:	This gene encodes a 59 kDa protein that is associated with the U11 small nuclear ribonucleoprotein (snRNP); which is a component of the minor U12-type spliceosome responsible for catalyzing pre-mRNA splicing of U12-type introns.
Synonyms:	ES18; HES18



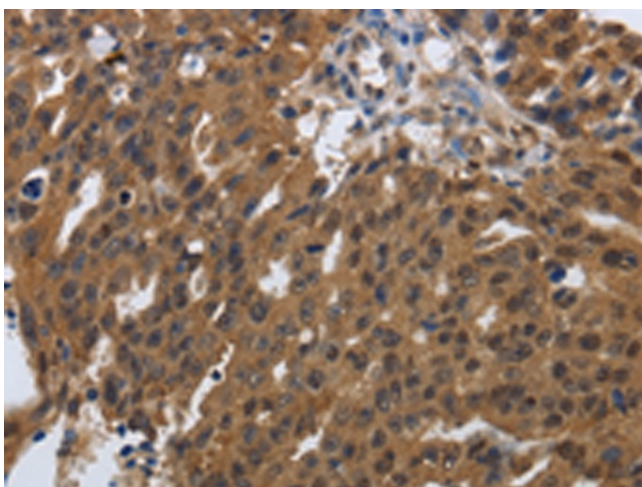
[View online »](#)

Product images:

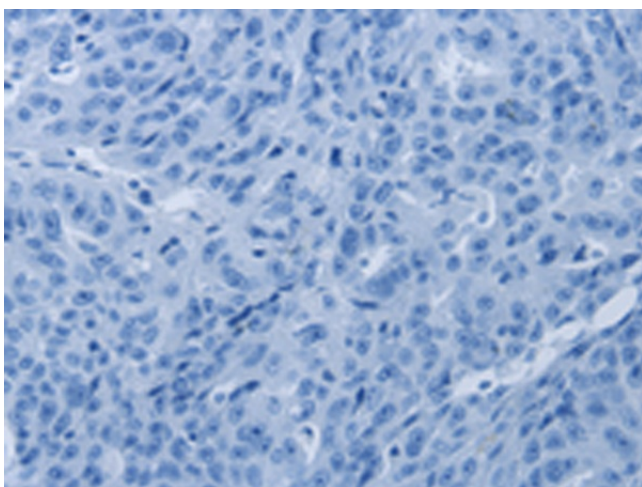
Immunohistochemistry of paraffin-embedded Human lung cancer tissue using TA322562 (PDCD7 Antibody) at dilution 1/60 (Original magnification: ×200)



Immunohistochemistry of paraffin-embedded Human lung cancer tissue using TA322562 (PDCD7 Antibody) at dilution 1/60, treated with synthetic peptide. (Original magnification: ×200)



Immunohistochemistry of paraffin-embedded Human ovarian cancer tissue using TA322562 (PDCD7 Antibody) at dilution 1/60 (Original magnification: $\times 200$)



Immunohistochemistry of paraffin-embedded Human ovarian cancer tissue using TA322562 (PDCD7 Antibody) at dilution 1/60, treated with synthetic peptide. (Original magnification: $\times 200$)