

Product datasheet for **TA322558S**

NME6 Rabbit Polyclonal Antibody

Product data:

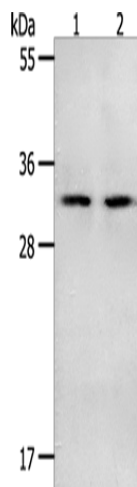
Product Type:	Primary Antibodies
Applications:	WB
Recommended Dilution:	WB: 200-1000 WB positive control: Mouse spleen and intestinum crassum tissue
Reactivity:	Human, Mouse, Rat
Host:	Rabbit
Isotype:	IgG
Clonality:	Polyclonal
Immunogen:	Full length fusion protein
Formulation:	PBS pH7.3, 0.05% NaN ₃ , 50% glycerol
Purification:	Antigen affinity purification
Conjugation:	Unconjugated
Storage:	Store at -20°C as received.
Stability:	Stable for 12 months from date of receipt.
Predicted Protein Size:	21 kDa
Gene Name:	NME/NM23 nucleoside diphosphate kinase 6
Database Link:	NP_005784 Entrez Gene 54369 Mouse Entrez Gene 58964 Rat Entrez Gene 10201 Human O75414
Background:	Nucleoside diphosphate (NDP) kinases (EC 2.7.4.6); such as NME6; are ubiquitous enzymes that catalyze transfer of gamma-phosphates; via a phosphohistidine intermediate; between nucleoside and dioxynucleoside tri- and diphosphates. Major role in the synthesis of nucleoside triphosphates other than ATP. The ATP gamma phosphate is transferred to the NDP beta phosphate via a ping-pong mechanism; using a phosphorylated active-site intermediate. Inhibitor of p53-induced apoptosis.
Synonyms:	IPIA-ALPHA; NDK 6; NM23-H6
Protein Families:	Druggable Genome



[View online »](#)

Protein Pathways: Metabolic pathways, Purine metabolism, Pyrimidine metabolism

Product images:



Gel: 10%SDS-PAGE
Lysate: 40 μ g
Lane 1-2: Mouse spleen tissue
Mouse intestinum crassum tissue
Primary antibody: [TA322558] (NME6 Antibody) at dilution 1/400
Secondary antibody: Goat anti rabbit IgG at 1/8000 dilution
Exposure time: 1 minute