

## Product datasheet for **TA322558**

### NME6 Rabbit Polyclonal Antibody

#### Product data:

Product Type:	Primary Antibodies
Applications:	WB
Recommended Dilution:	WB: 200-1000 WB positive control: Mouse spleen and intestinum crassum tissue
Reactivity:	Human, Mouse, Rat
Host:	Rabbit
Isotype:	IgG
Clonality:	Polyclonal
Immunogen:	Full length fusion protein
Formulation:	PBS pH7.3, 0.05% NaN <sub>3</sub> , 50% glycerol
Concentration:	lot specific
Purification:	Antigen affinity purification
Conjugation:	Unconjugated
Storage:	Store at -20°C as received.
Stability:	Stable for 12 months from date of receipt.
Predicted Protein Size:	21 kDa
Gene Name:	NME/NM23 nucleoside diphosphate kinase 6
Database Link:	<a href="#">NP_005784</a> <a href="#">Entrez Gene 54369 MouseEntrez Gene 58964 RatEntrez Gene 10201 Human O75414</a>
Background:	Nucleoside diphosphate (NDP) kinases (EC 2.7.4.6); such as NME6; are ubiquitous enzymes that catalyze transfer of gamma-phosphates; via a phosphohistidine intermediate; between nucleoside and dioxynucleoside tri- and diphosphates. Major role in the synthesis of nucleoside triphosphates other than ATP. The ATP gamma phosphate is transferred to the NDP beta phosphate via a ping-pong mechanism; using a phosphorylated active-site intermediate. Inhibitor of p53-induced apoptosis.
Synonyms:	IPIA-ALPHA; NDK 6; NM23-H6

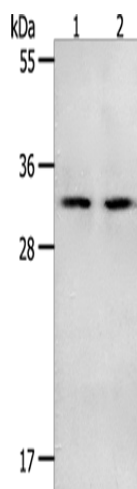


[View online »](#)

Protein Families: Druggable Genome

Protein Pathways: Metabolic pathways, Purine metabolism, Pyrimidine metabolism

### Product images:



Gel: 10%SDS-PAGE

Lysate: 40 µg

Lane 1-2: Mouse spleen tissue

Mouse intestinum crassum tissue

Primary antibody: TA322558 (NME6 Antibody) at dilution 1/400

Secondary antibody: Goat anti rabbit IgG at 1/8000 dilution

Exposure time: 1 minute