

## Product datasheet for **TA322556S**

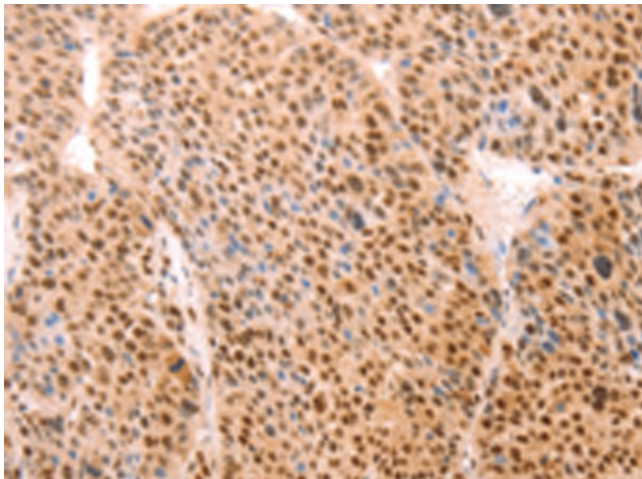
### Aly (ALYREF) Rabbit Polyclonal Antibody

#### Product data:

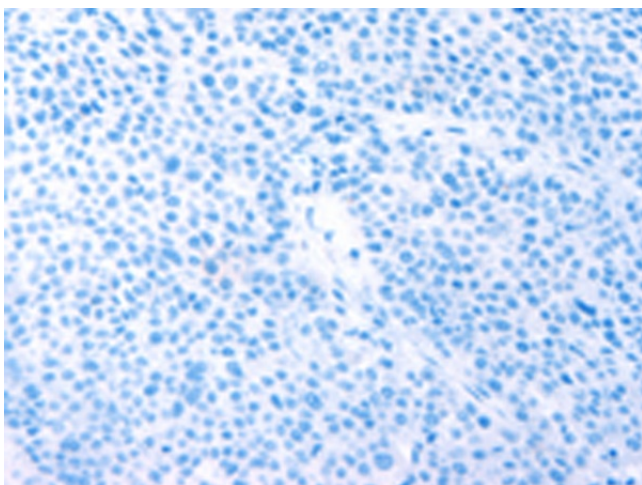
Product Type:	Primary Antibodies
Applications:	IHC
Recommended Dilution:	IHC: 25-100 Positive control: Human liver cancer Predicted cell location: Nucleus, Cytoplasm
Reactivity:	Human, Mouse
Host:	Rabbit
Isotype:	IgG
Clonality:	Polyclonal
Immunogen:	Synthetic peptide corresponding to a region derived from 8-21 amino acids of human Aly/REF export factor
Formulation:	PBS pH7.3, 0.05% NaN <sub>3</sub> , 50% glycerol
Purification:	Antigen affinity purification
Conjugation:	Unconjugated
Storage:	Store at -20°C as received.
Stability:	Stable for 12 months from date of receipt.
Gene Name:	Aly/REF export factor
Database Link:	<a href="#">NP_005773</a> <a href="#">Entrez Gene 21681 Mouse</a> <a href="#">Entrez Gene 10189 Human</a> <a href="#">Q86V81</a>
Background:	The protein encoded by this gene is a heat stable; nuclear protein and functions as a molecular chaperone. It is thought to regulate dimerization; DNA binding; and transcriptional activity of basic region-leucine zipper (bZIP) proteins.
Synonyms:	ALY; BEF; REF; THOC4
Protein Pathways:	Spliceosome



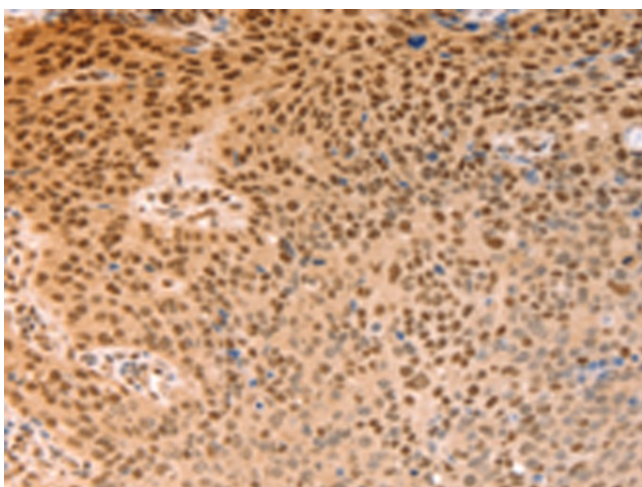
[View online »](#)

**Product images:**

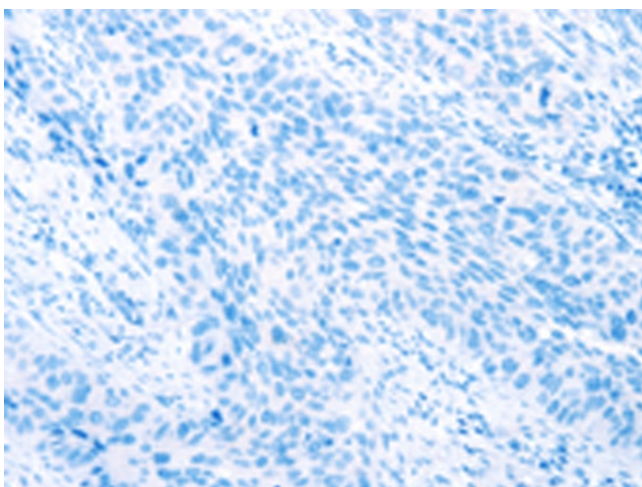
Immunohistochemistry of paraffin-embedded Human liver cancer tissue using [TA322556] (ALYREF Antibody) at dilution 1/15 (Original magnification: ×200)



Immunohistochemistry of paraffin-embedded Human liver cancer tissue using [TA322556] (ALYREF Antibody) at dilution 1/15, treated with synthetic peptide. (Original magnification: ×200)



Immunohistochemistry of paraffin-embedded Human lymphoma tissue using [TA322556] (ALYREF Antibody) at dilution 1/15 (Original magnification:  $\times 200$ )



Immunohistochemistry of paraffin-embedded Human lymphoma tissue using [TA322556] (ALYREF Antibody) at dilution 1/15, treated with synthetic peptide. (Original magnification:  $\times 200$ )