

Product datasheet for **TA322556**

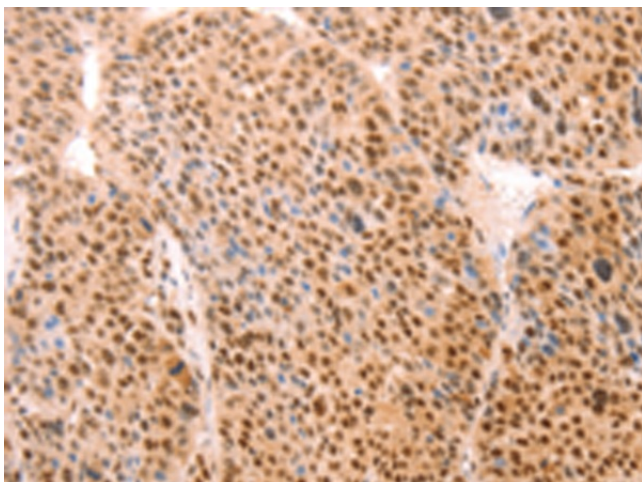
Aly (ALYREF) Rabbit Polyclonal Antibody

Product data:

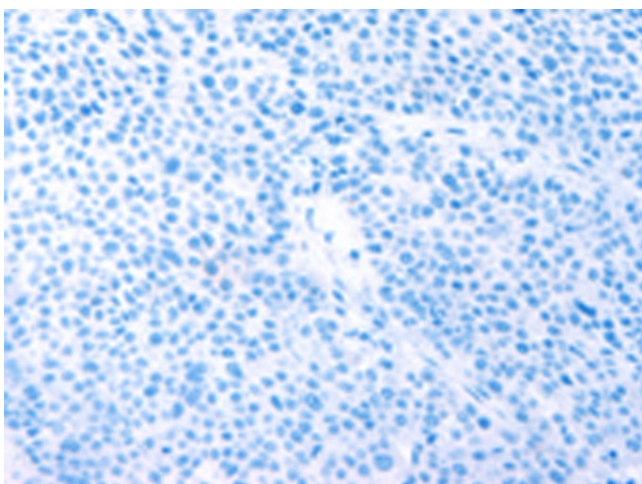
Product Type:	Primary Antibodies
Applications:	IHC
Recommended Dilution:	IHC: 25-100 Positive control: Human liver cancer Predicted cell location: Nucleus, Cytoplasm
Reactivity:	Human, Mouse
Host:	Rabbit
Isotype:	IgG
Clonality:	Polyclonal
Immunogen:	Synthetic peptide corresponding to a region derived from 8-21 amino acids of human Aly/REF export factor
Formulation:	PBS pH7.3, 0.05% NaN ₃ , 50% glycerol
Concentration:	lot specific
Purification:	Antigen affinity purification
Conjugation:	Unconjugated
Storage:	Store at -20°C as received.
Stability:	Stable for 12 months from date of receipt.
Gene Name:	Aly/REF export factor
Database Link:	NP_005773 Entrez Gene 21681 Mouse Entrez Gene 10189 Human Q86V81
Background:	The protein encoded by this gene is a heat stable; nuclear protein and functions as a molecular chaperone. It is thought to regulate dimerization; DNA binding; and transcriptional activity of basic region-leucine zipper (bZIP) proteins.
Synonyms:	ALY; BEF; REF; THOC4
Protein Pathways:	Spliceosome



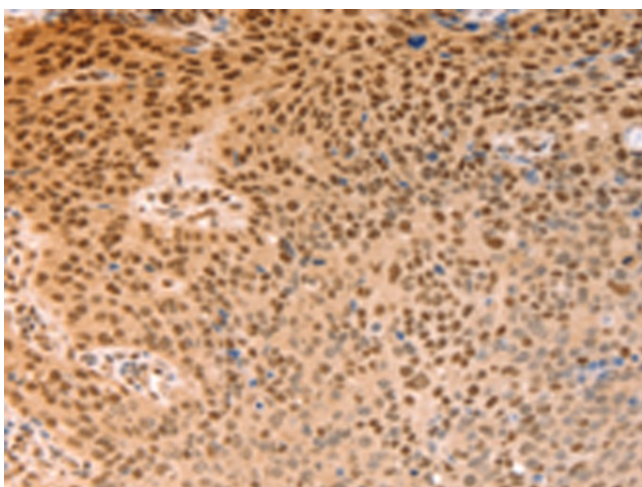
[View online »](#)

Product images:

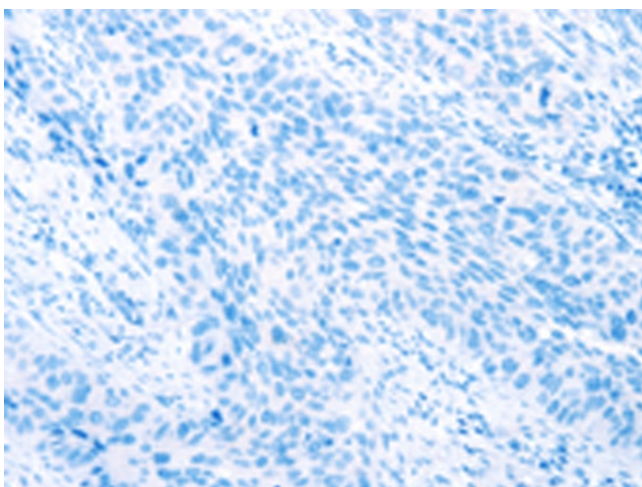
Immunohistochemistry of paraffin-embedded Human liver cancer tissue using TA322556 (ALYREF Antibody) at dilution 1/15 (Original magnification: $\times 200$)



Immunohistochemistry of paraffin-embedded Human liver cancer tissue using TA322556 (ALYREF Antibody) at dilution 1/15, treated with synthetic peptide. (Original magnification: $\times 200$)



Immunohistochemistry of paraffin-embedded Human lymphoma tissue using TA322556 (ALYREF Antibody) at dilution 1/15 (Original magnification: $\times 200$)



Immunohistochemistry of paraffin-embedded Human lymphoma tissue using TA322556 (ALYREF Antibody) at dilution 1/15, treated with synthetic peptide. (Original magnification: $\times 200$)