

Product datasheet for **TA322553**

IGSF6 Rabbit Polyclonal Antibody

Product data:

Product Type:	Primary Antibodies
Applications:	IHC
Recommended Dilution:	IHC: 5-20 Positive control: Human thyroid cancer Predicted cell location: Cytoplasm
Reactivity:	Human
Host:	Rabbit
Isotype:	IgG
Clonality:	Polyclonal
Immunogen:	Fusion protein corresponding to a region derived from 28-153 amino acids of human immunoglobulin superfamily, member 6
Formulation:	PBS pH7.3, 0.05% NaN ₃ , 50% glycerol
Concentration:	lot specific
Purification:	Antigen affinity purification
Conjugation:	Unconjugated
Storage:	Store at -20°C as received.
Stability:	Stable for 12 months from date of receipt.
Gene Name:	immunoglobulin superfamily member 6
Database Link:	NP_005840 Entrez Gene 10261 Human O95976



[View online »](#)

Background:

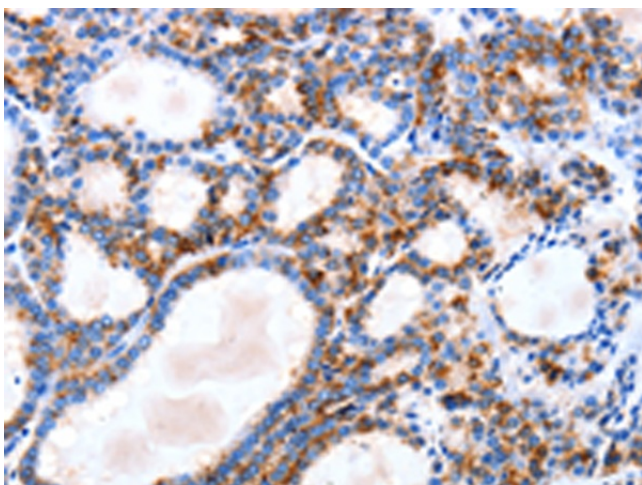
IGSF6 (DORA); a novel member of the immunoglobulin superfamily (IGSF) from human and rat expressed in dendritic and myeloid cells. Using a probe from the open reading frame of the rat cDNA; we isolated a cosmid which contains the entire mouse gene. By comparative analysis and reverse transcriptase polymerase chain reaction; we defined the intron/exon structure and the mRNA of the mouse gene and; with respect to human BAC clones; the human gene. The genes span 10 kb (mouse) and 12 kb (human); with six exons arranged in a manner similar to other members of the IGSF. All intron/exon boundaries follow the GT-AG rule. Expression of the mouse *Igsf6* gene is restricted to cells of the immune system; particularly macrophages. Northern blot revealed a single mRNA of 2.5 kb; in contrast to the human gene which is expressed as two mRNAs of 1 and 2.5 kb. The human and mouse genes were localized to a locus associated with inflammatory bowel disease. Analysis of the flanking regions of the *Igsf6* gene revealed the presence of an unrelated gene; transcribed from the opposite strand of the DNA and oriented such that the *Igsf6* gene is encoded entirely within an intron. An identical organization is seen in human.

Synonyms:

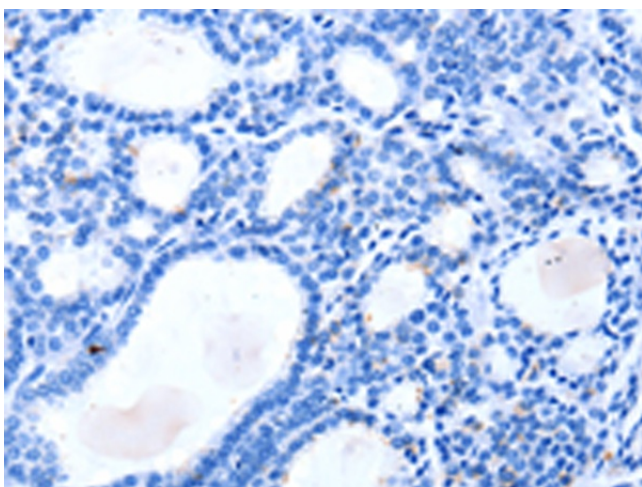
DORA

Protein Families:

Transmembrane

Product images:

Immunohistochemistry of paraffin-embedded Human thyroid cancer tissue using TA322553 (IGSF6 Antibody) at dilution 1/10 (Original magnification: ×200)



Immunohistochemistry of paraffin-embedded Human thyroid cancer tissue using TA322553 (IGSF6 Antibody) at dilution 1/10, treated with fusion protein. (Original magnification: ×200)