

Product datasheet for **TA322551**

AKAP8 Rabbit Polyclonal Antibody

Product data:

Product Type:	Primary Antibodies
Applications:	IHC, WB
Recommended Dilution:	WB: 500-2000 WB positive control: Hela and 293T cells IHC: 25-100 Positive control: Human colon cancer Predicted cell location: cytoplasm, Nucleus
Reactivity:	Human
Host:	Rabbit
Isotype:	IgG
Clonality:	Polyclonal
Immunogen:	Synthetic peptide peptide corresponding to a region derived from 679-691 amino acids of human A kinase (PRKA) anchor protein 8
Formulation:	PBS pH7.3, 0.05% NaN ₃ , 50% glycerol
Concentration:	lot specific
Purification:	Antigen affinity purification
Conjugation:	Unconjugated
Storage:	Store at -20°C as received.
Stability:	Stable for 12 months from date of receipt.
Predicted Protein Size:	76 kDa
Gene Name:	A-kinase anchoring protein 8
Database Link:	NP_005849 Entrez Gene 10270 Human O43823



[View online »](#)

Background:

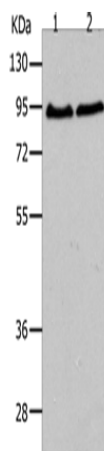
This gene encodes a member of the A-kinase anchor protein family. A-kinase anchor proteins are scaffold proteins that contain a binding domain for the RI/RII subunit of protein kinase A (PKA) and recruit PKA and other signaling molecules to specific subcellular locations. This gene encodes a nuclear A-kinase anchor protein that binds to the RII alpha subunit of PKA and may play a role in chromosome condensation during mitosis by targeting PKA and the condensin complex to chromatin. A pseudogene of this gene is located on the short arm of chromosome 9.

Synonyms:

AKAP-8; AKAP-95; AKAP 95; AKAP95

Protein Families:

Druggable Genome

Product images:

Gel: 10%SDS-PAGE

Lysate: 40 µg

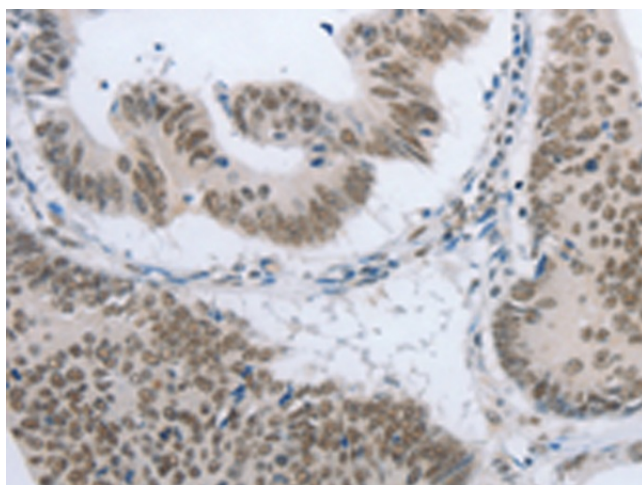
Lane 1-2: HeLa cells

293T cells

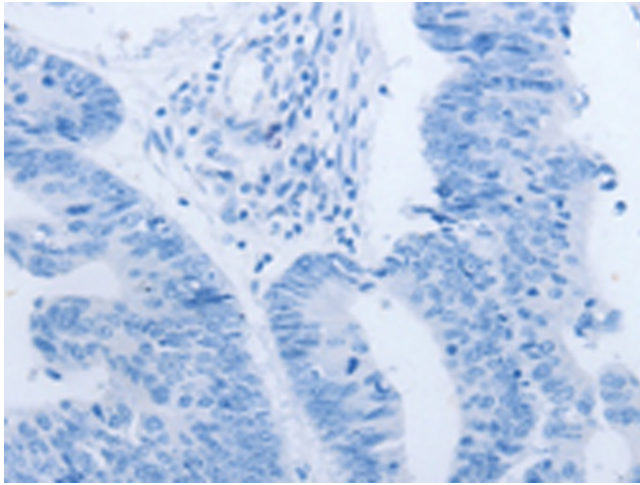
Primary antibody: TA322551 (AKAP8 Antibody) at dilution 1/250

Secondary antibody: Goat anti rabbit IgG at 1/8000 dilution

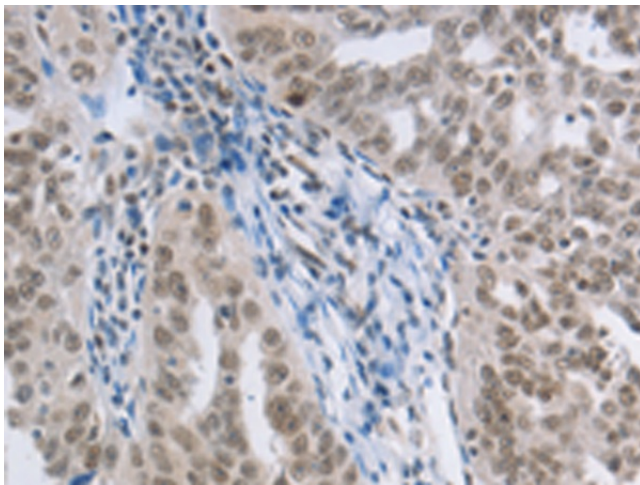
Exposure time: 2 minutes



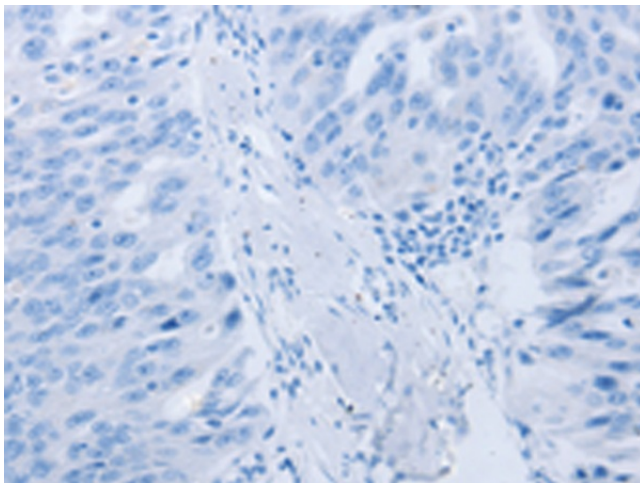
Immunohistochemistry of paraffin-embedded Human colon cancer tissue using TA322551 (AKAP8 Antibody) at dilution 1/15 (Original magnification: ×200)



Immunohistochemistry of paraffin-embedded Human colon cancer tissue using TA322551 (AKAP8 Antibody) at dilution 1/15, treated with synthetic peptide. (Original magnification: $\times 200$)



Immunohistochemistry of paraffin-embedded Human ovarian cancer tissue using TA322551 (AKAP8 Antibody) at dilution 1/15 (Original magnification: $\times 200$)



Immunohistochemistry of paraffin-embedded Human ovarian cancer tissue using TA322551 (AKAP8 Antibody) at dilution 1/15, treated with synthetic peptide. (Original magnification: $\times 200$)