

Product datasheet for **TA322550**

AKAP8 Rabbit Polyclonal Antibody

Product data:

Product Type:	Primary Antibodies
Applications:	IHC, WB
Recommended Dilution:	WB: 200-1000 WB positive control: Human liver cancer tissue IHC: 25-100 Positive control: Human esophagus cancer Predicted cell location: cytoplasm, Nucleus
Reactivity:	Human
Host:	Rabbit
Isotype:	IgG
Clonality:	Polyclonal
Immunogen:	Synthetic peptide peptide corresponding to a region derived from 679-691 amino acids of human A kinase (PRKA) anchor protein 8
Formulation:	PBS pH7.3, 0.05% NaN ₃ , 50% glycerol
Concentration:	lot specific
Purification:	Antigen affinity purification
Conjugation:	Unconjugated
Storage:	Store at -20°C as received.
Stability:	Stable for 12 months from date of receipt.
Predicted Protein Size:	76 kDa
Gene Name:	A-kinase anchoring protein 8
Database Link:	NP_005849 Entrez Gene 10270 Human O43823



[View online »](#)

Background:

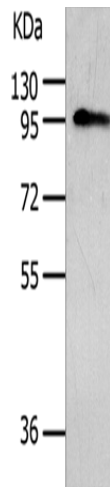
This gene encodes a member of the A-kinase anchor protein family. A-kinase anchor proteins are scaffold proteins that contain a binding domain for the RI/RII subunit of protein kinase A (PKA) and recruit PKA and other signaling molecules to specific subcellular locations. This gene encodes a nuclear A-kinase anchor protein that binds to the RII alpha subunit of PKA and may play a role in chromosome condensation during mitosis by targeting PKA and the condensin complex to chromatin. A pseudogene of this gene is located on the short arm of chromosome 9.

Synonyms:

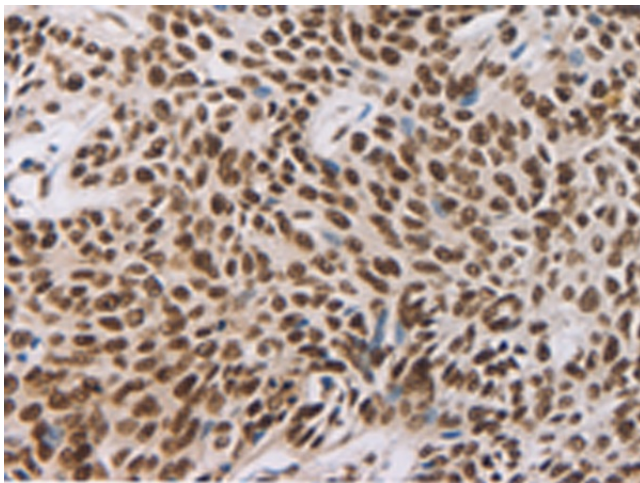
AKAP-8; AKAP-95; AKAP 95; AKAP95

Protein Families:

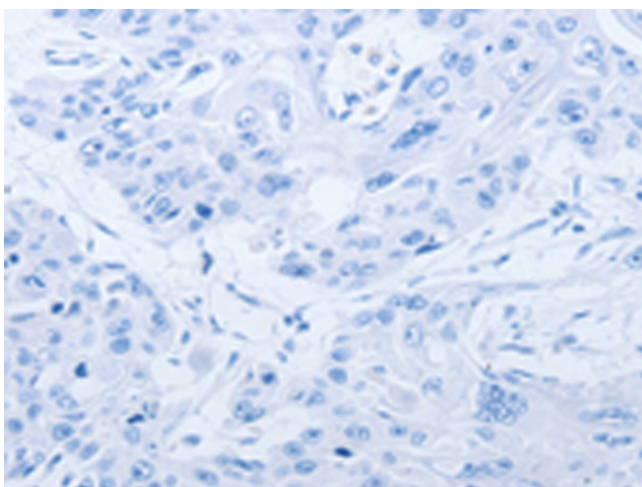
Druggable Genome

Product images:

Gel: 10%SDS-PAGE
Lysate: 40 μ g
Lane: Human liver cancer tissue
Primary antibody: TA322550 (AKAP8 Antibody) at dilution 1/500
Secondary antibody: Goat anti rabbit IgG at 1/8000 dilution
Exposure time: 30 seconds



Immunohistochemistry of paraffin-embedded Human esophagus cancer tissue using TA322550 (AKAP8 Antibody) at dilution 1/30 (Original magnification: \times 200)



Immunohistochemistry of paraffin-embedded Human esophagus cancer tissue using TA322550 (AKAP8 Antibody) at dilution 1/30, treated with synthetic peptide. (Original magnification: $\times 200$)