

## Product datasheet for **TA322548**

### **RAMP1 Rabbit Polyclonal Antibody**

#### **Product data:**

Product Type:	Primary Antibodies
Applications:	IHC, WB
Recommended Dilution:	ELISA: 1:1000-2000, WB: 1:200-1000, IHC: 1:10-50
Reactivity:	Human, Mouse, Rat
Host:	Rabbit
Isotype:	IgG
Clonality:	Polyclonal
Immunogen:	Fusion protein corresponding to a region derived from 27-117 amino acids of human receptor (G protein-coupled) activity modifying protein 1
Formulation:	PBS pH7.3, 0.05% NaN <sub>3</sub> , 50% glycerol
Concentration:	lot specific
Purification:	Antigen affinity purification
Conjugation:	Unconjugated
Storage:	Store at -20°C as received.
Stability:	Stable for 12 months from date of receipt.
Predicted Protein Size:	17 kDa
Gene Name:	receptor activity modifying protein 1
Database Link:	<a href="#">NP_005846</a> <a href="#">Entrez Gene 51801 MouseEntrez Gene 58965 RatEntrez Gene 10267 Human O60894</a>



[View online »](#)

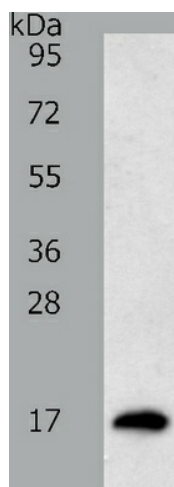
**Background:** The protein encoded by this gene is a member of the RAMP family of single-transmembrane-domain proteins; called receptor (calcitonin) activity modifying proteins (RAMPs). RAMPs are type I transmembrane proteins with an extracellular N terminus and a cytoplasmic C terminus. RAMPs are required to transport calcitonin-receptor-like receptor (CRLR) to the plasma membrane. CRLR; a receptor with seven transmembrane domains; can function as either a calcitonin-gene-related peptide (CGRP) receptor or an adrenomedullin receptor; depending on which members of the RAMP family are expressed. In the presence of this (RAMP1) protein; CRLR functions as a CGRP receptor. The RAMP1 protein is involved in the terminal glycosylation; maturation; and presentation of the CGRP receptor to the cell surface.

**Synonyms:** receptor (calcitonin) activity modifying protein 1; receptor (G protein-coupled) activity modifying protein 1; receptor-activity modifying protein 1

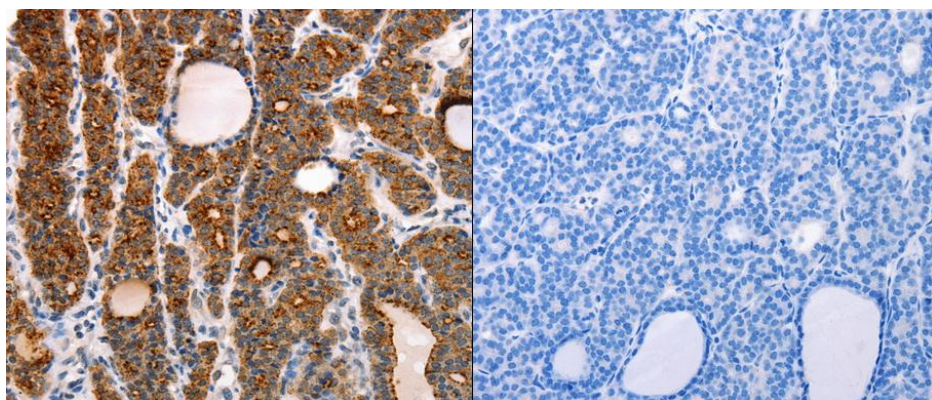
**Protein Families:** Druggable Genome, Transmembrane

**Protein Pathways:** Vascular smooth muscle contraction

### Product images:



Predicted band size: 17 kDa. Positive control: Mouse testis tissue lysate. Recommended dilution: 1/200-1000. (Gel: 12%SDS-PAGE Lysate: 40 ug per lane Primary antibody: 1/200 dilution Secondary antibody: Goat anti Rabbit IgG - H&L (HRP) at 1/10000 dilution Exposure time: 10 minutes)



Predicted cell location: Membrane, Cytoplasm. Positive control: Human thyroid cancer tissue. Recommended dilution: 1/10-50 The image on the left is immunohistochemistry of paraffin-embedded human thyroid cancer tissue using RAMP1 antibody at dilution 1/10, on the right is treated with the fusion protein. (Original magnification:x200)