

## Product datasheet for **TA322547S**

### **MADH7 (SMAD7) Rabbit Polyclonal Antibody**

#### **Product data:**

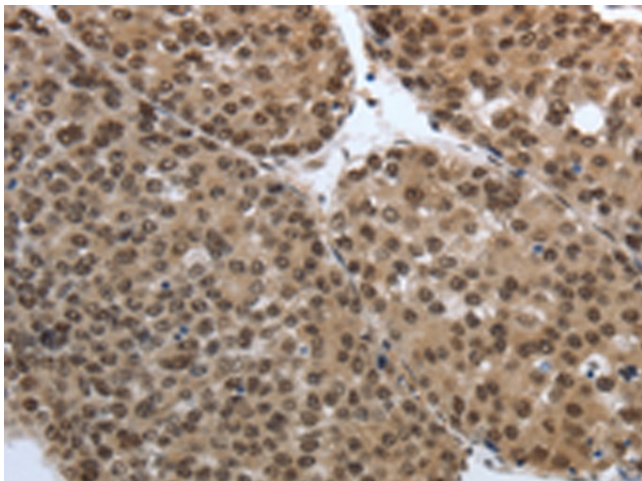
<b>Product Type:</b>	Primary Antibodies
<b>Applications:</b>	IHC
<b>Recommended Dilution:</b>	IHC: 50-200 Positive control: Human liver cancer Predicted cell location: Cytoplasm, Nucleus
<b>Reactivity:</b>	Human, Mouse, Rat
<b>Host:</b>	Rabbit
<b>Isotype:</b>	IgG
<b>Clonality:</b>	Polyclonal
<b>Immunogen:</b>	Synthetic peptide corresponding to a region derived from 370-383 amino acids of Human SMAD family member 7
<b>Formulation:</b>	PBS pH7.3, 0.05% NaN <sub>3</sub> , 50% glycerol
<b>Purification:</b>	Antigen affinity purification
<b>Conjugation:</b>	Unconjugated
<b>Storage:</b>	Store at -20°C as received.
<b>Stability:</b>	Stable for 12 months from date of receipt.
<b>Gene Name:</b>	SMAD family member 7
<b>Database Link:</b>	<a href="#">NP_005895</a> <a href="#">Entrez Gene 17131 Mouse</a> <a href="#">Entrez Gene 81516 Rat</a> <a href="#">Entrez Gene 4092 Human</a> <a href="#">O15105</a>
<b>Background:</b>	The protein encoded by this gene is a nuclear protein that binds the E3 ubiquitin ligase SMURF2. Upon binding; this complex translocates to the cytoplasm; where it interacts with TGF-beta receptor type-1 (TGFBR1); leading to the degradation of both the encoded protein and TGFBR1. Expression of this gene is induced by TGFBR1. Variations in this gene are a cause of susceptibility to colorectal cancer type 3 (CRCS3). Several transcript variants encoding different isoforms have been found for this gene.
<b>Synonyms:</b>	CRCS3; MADH7; MADH8
<b>Protein Families:</b>	Druggable Genome, Transcription Factors



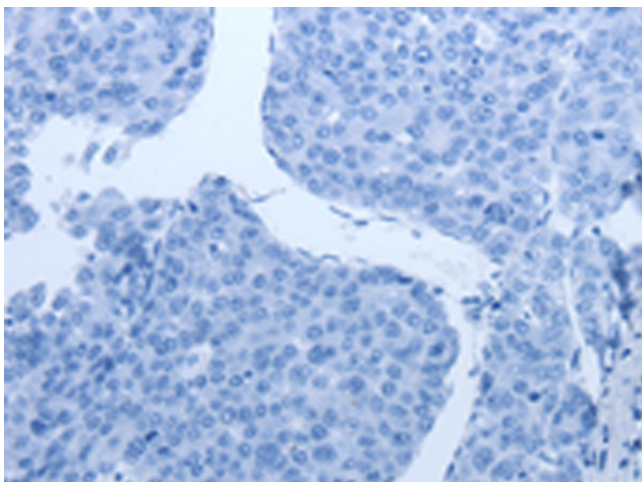
[View online »](#)

Protein Pathways: TGF-beta signaling pathway

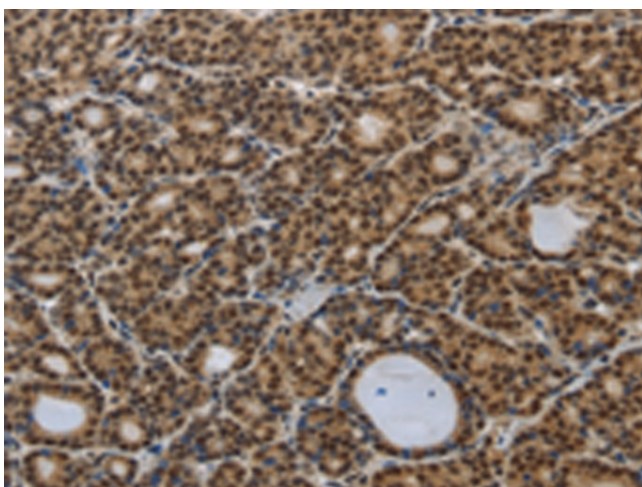
### Product images:



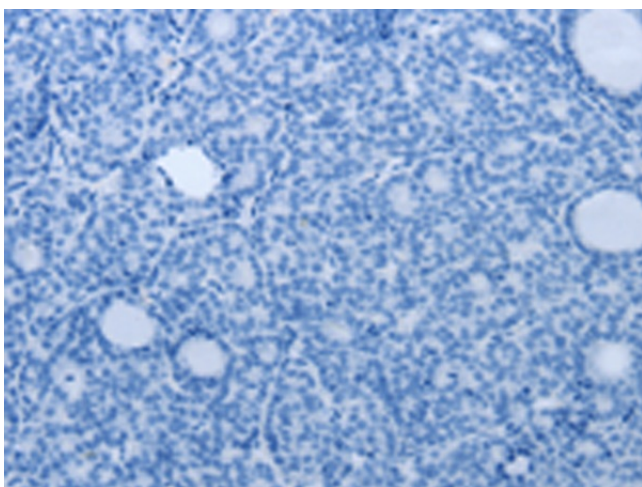
Immunohistochemistry of paraffin-embedded Human liver cancer tissue using [TA322547] (SMAD7 Antibody) at dilution 1/40 (Original magnification:  $\times 200$ )



Immunohistochemistry of paraffin-embedded Human liver cancer tissue using [TA322547] (SMAD7 Antibody) at dilution 1/40, treated with synthetic peptide. (Original magnification:  $\times 200$ )



Immunohistochemistry of paraffin-embedded Human thyroid cancer tissue using [TA322547] (SMAD7 Antibody) at dilution 1/40 (Original magnification:  $\times 200$ )



Immunohistochemistry of paraffin-embedded Human thyroid cancer tissue using [TA322547] (SMAD7 Antibody) at dilution 1/40, treated with synthetic peptide. (Original magnification:  $\times 200$ )