

Product datasheet for **TA322546S**

MADH7 (SMAD7) Rabbit Polyclonal Antibody

Product data:

Product Type:	Primary Antibodies
Applications:	IHC, WB
Recommended Dilution:	WB: 500-2000 WB positive control: Mouse heart tissue lysate IHC: 40-200 Positive control: Human esophagus cancer Predicted cell location: Nucleus and Cytoplasm
Reactivity:	Human, Mouse, Rat
Host:	Rabbit
Isotype:	IgG
Clonality:	Polyclonal
Immunogen:	Synthetic peptide corresponding to a region derived from 370-383 amino acids of Human SMAD family member 7
Formulation:	PBS pH7.3, 0.05% NaN ₃ , 50% glycerol
Purification:	Antigen affinity purification
Conjugation:	Unconjugated
Storage:	Store at -20°C as received.
Stability:	Stable for 12 months from date of receipt.
Predicted Protein Size:	46 kDa
Gene Name:	SMAD family member 7
Database Link:	NP_005895 Entrez Gene 17131 Mouse Entrez Gene 81516 Rat Entrez Gene 4092 Human O15105



[View online »](#)

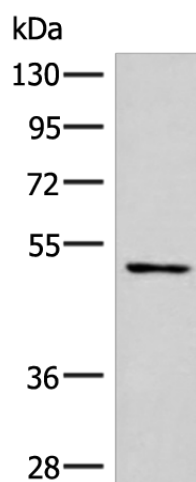
Background: The protein encoded by this gene is a nuclear protein that binds the E3 ubiquitin ligase SMURF2. Upon binding, this complex translocates to the cytoplasm, where it interacts with TGF-beta receptor type-1 (TGFBR1), leading to the degradation of both the encoded protein and TGFBR1. Expression of this gene is induced by TGFBR1. Variations in this gene are a cause of susceptibility to colorectal cancer type 3 (CRCS3). Several transcript variants encoding different isoforms have been found for this gene.

Synonyms: CRCS3; MADH7; MADH8

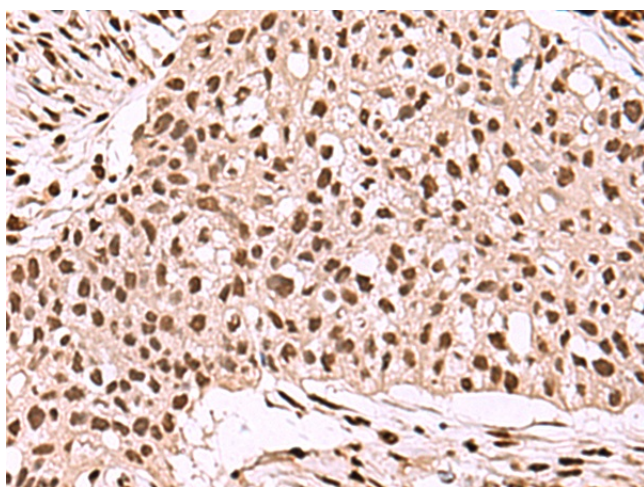
Protein Families: Druggable Genome, Transcription Factors

Protein Pathways: TGF-beta signaling pathway

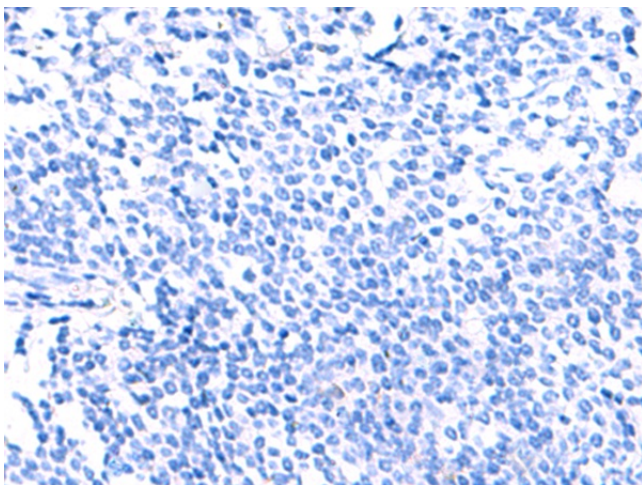
Product images:



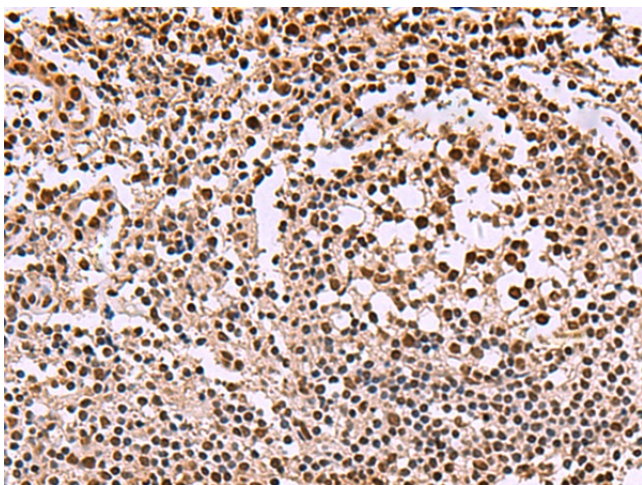
Gel: 8%SDS-PAGE
 Lysate: 40 µg
 Lane: Mouse heart tissue lysate
 Primary antibody: [TA322546] (SMAD7 Antibody) at dilution 1/900
 Secondary antibody: Goat anti rabbit IgG at 1/5000 dilution
 Exposure time: 30 seconds



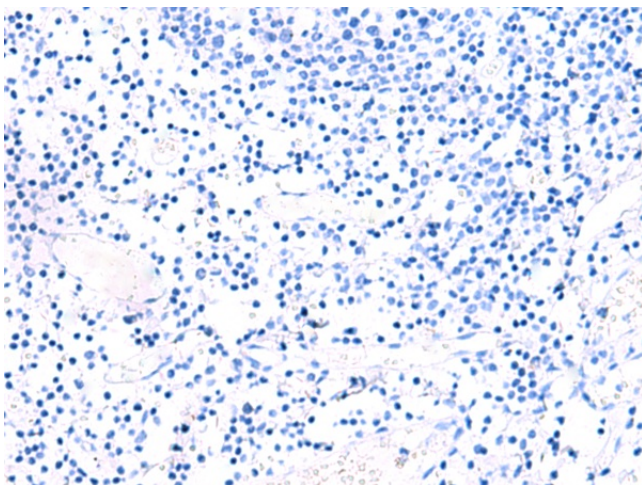
Immunohistochemistry of paraffin-embedded Human esophagus cancer tissue using [TA322546] (SMAD7 Antibody) at dilution 1/40 (Original magnification: ×200)



Immunohistochemistry of paraffin-embedded Human esophagus cancer tissue using [TA322546] (SMAD7 Antibody) at dilution 1/40, treated with synthetic peptide. (Original magnification: ×200)



Immunohistochemistry of paraffin-embedded Human tonsil tissue using [TA322546] (SMAD7 Antibody) at dilution 1/40 (Original magnification: ×200)



Immunohistochemistry of paraffin-embedded Human tonsil tissue using [TA322546] (SMAD7 Antibody) at dilution 1/40, treated with synthetic peptide. (Original magnification: ×200)