

## Product datasheet for **TA322546**

### **MADH7 (SMAD7) Rabbit Polyclonal Antibody**

#### **Product data:**

Product Type:	Primary Antibodies
Applications:	IHC, WB
Recommended Dilution:	WB: 500-2000 WB positive control: Mouse heart tissue lysate IHC: 40-200 Positive control: Human esophagus cancer Predicted cell location: Nucleus and Cytoplasm
Reactivity:	Human, Mouse, Rat
Host:	Rabbit
Isotype:	IgG
Clonality:	Polyclonal
Immunogen:	Synthetic peptide corresponding to a region derived from 370-383 amino acids of Human SMAD family member 7
Formulation:	PBS pH7.3, 0.05% NaN <sub>3</sub> , 50% glycerol
Concentration:	lot specific
Purification:	Antigen affinity purification
Conjugation:	Unconjugated
Storage:	Store at -20°C as received.
Stability:	Stable for 12 months from date of receipt.
Predicted Protein Size:	46 kDa
Gene Name:	SMAD family member 7
Database Link:	<a href="#">NP_005895</a> <a href="#">Entrez Gene 17131 Mouse</a> <a href="#">Entrez Gene 81516 Rat</a> <a href="#">Entrez Gene 4092 Human</a> <a href="#">O15105</a>



[View online »](#)

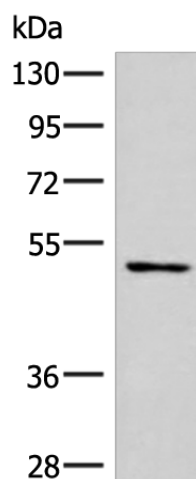
**Background:** The protein encoded by this gene is a nuclear protein that binds the E3 ubiquitin ligase SMURF2. Upon binding, this complex translocates to the cytoplasm, where it interacts with TGF-beta receptor type-1 (TGFBR1), leading to the degradation of both the encoded protein and TGFBR1. Expression of this gene is induced by TGFBR1. Variations in this gene are a cause of susceptibility to colorectal cancer type 3 (CRCS3). Several transcript variants encoding different isoforms have been found for this gene.

**Synonyms:** CRCS3; MADH7; MADH8

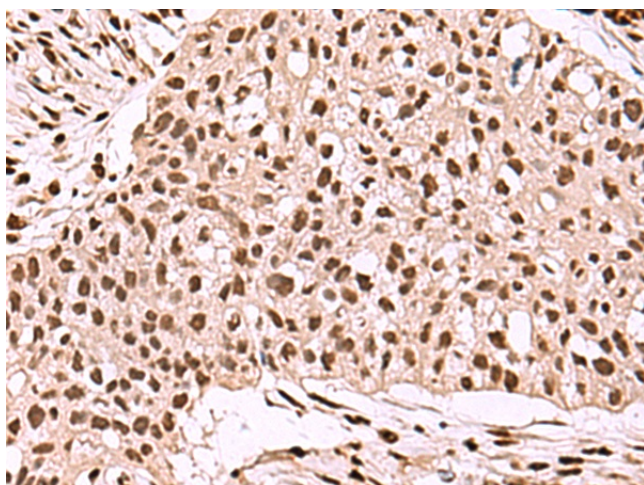
**Protein Families:** Druggable Genome, Transcription Factors

**Protein Pathways:** TGF-beta signaling pathway

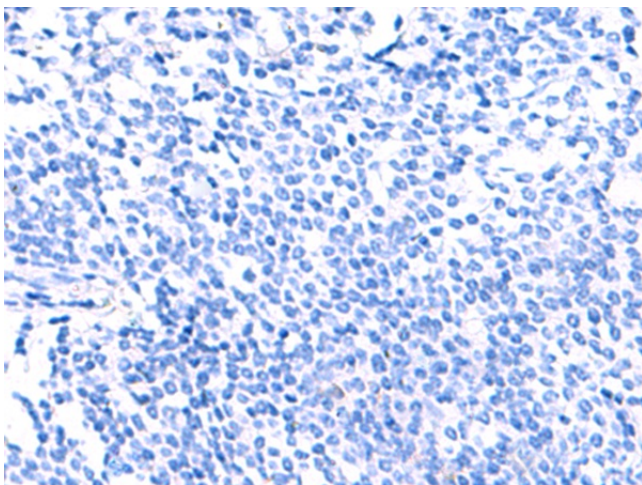
### Product images:



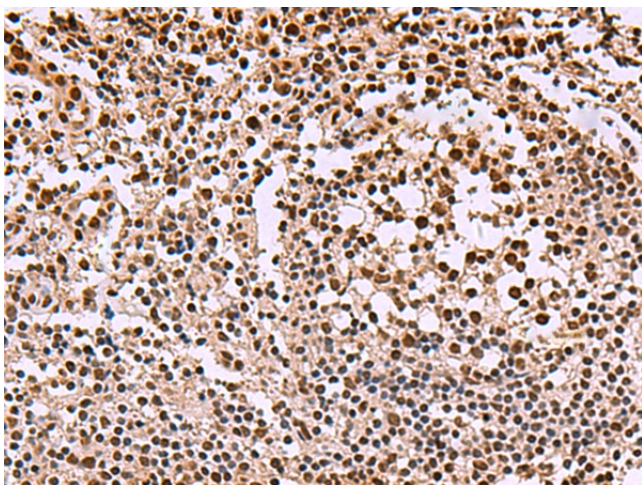
Gel: 8%SDS-PAGE  
Lysate: 40 µg  
Lane: Mouse heart tissue lysate  
Primary antibody: TA322546 (SMAD7 Antibody) at dilution 1/900  
Secondary antibody: Goat anti rabbit IgG at 1/5000 dilution  
Exposure time: 30 seconds



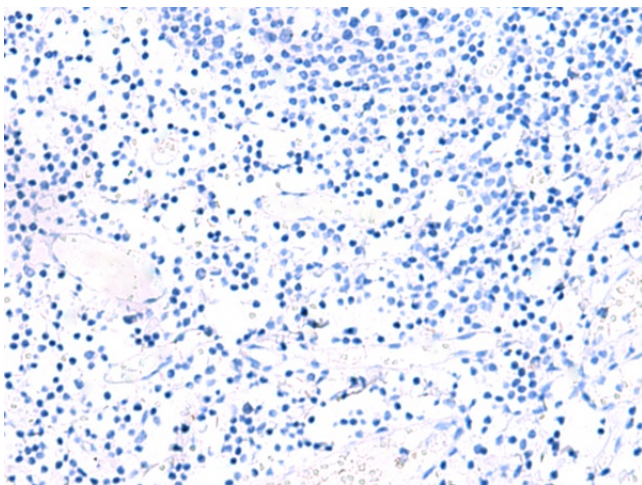
Immunohistochemistry of paraffin-embedded Human esophagus cancer tissue using TA322546 (SMAD7 Antibody) at dilution 1/40 (Original magnification: ×200)



Immunohistochemistry of paraffin-embedded Human esophagus cancer tissue using TA322546 (SMAD7 Antibody) at dilution 1/40, treated with synthetic peptide. (Original magnification: ×200)



Immunohistochemistry of paraffin-embedded Human tonsil tissue using TA322546 (SMAD7 Antibody) at dilution 1/40 (Original magnification: ×200)



Immunohistochemistry of paraffin-embedded Human tonsil tissue using TA322546 (SMAD7 Antibody) at dilution 1/40, treated with synthetic peptide. (Original magnification: ×200)