

Product datasheet for **TA322539**

Metallothionein (MT2A) Rabbit Polyclonal Antibody

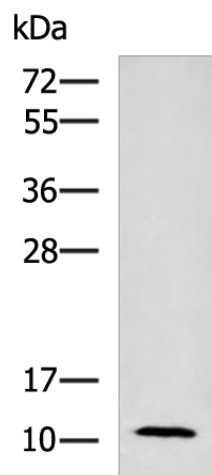
Product data:

Product Type:	Primary Antibodies
Applications:	IHC, WB
Recommended Dilution:	WB: 1000-5000 WB positive control: Mouse adrenal gland tissue lysate IHC: 50-300 Positive control: Human liver cancer Predicted cell location: Cytoplasm
Reactivity:	Human, Mouse
Host:	Rabbit
Isotype:	IgG
Clonality:	Polyclonal
Immunogen:	Full length fusion protein
Formulation:	PBS pH7.3, 0.05% NaN ₃ , 50% glycerol
Concentration:	lot specific
Purification:	Antigen affinity purification
Conjugation:	Unconjugated
Storage:	Store at -20°C as received.
Stability:	Stable for 12 months from date of receipt.
Gene Name:	metallothionein 2A
Database Link:	NP_005944 Entrez Gene 4502 Human P02795
Synonyms:	MT2

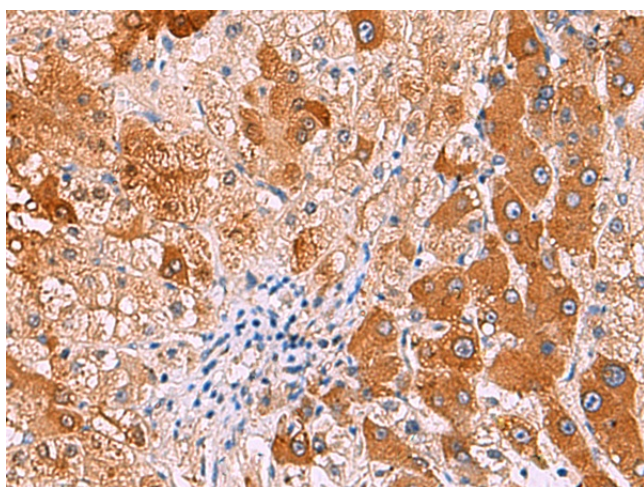


[View online »](#)

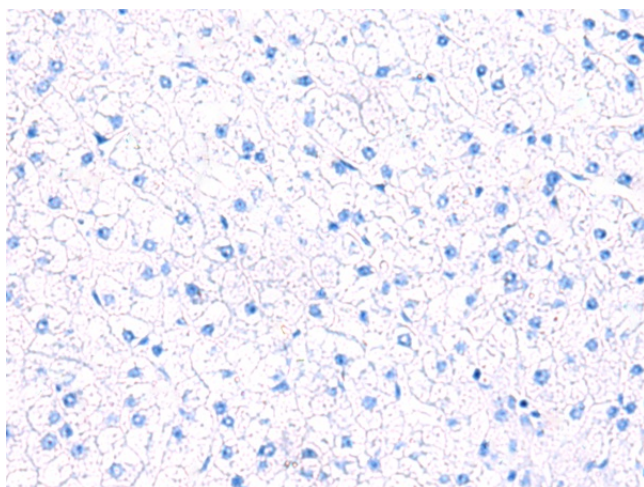
Product images:



Gel: 12%SDS-PAGE
Lysate: 40 µg
Lane: Mouse adrenal gland tissue lysate
Primary antibody: TA322539 (MT2A Antibody) at dilution 1/1600
Secondary antibody: Goat anti rabbit IgG at 1/5000 dilution
Exposure time: 20 seconds



Immunohistochemistry of paraffin-embedded Human liver cancer tissue using TA322539 (MT2A Antibody) at dilution 1/70 (Original magnification: ×200)



Immunohistochemistry of paraffin-embedded Human liver cancer tissue using TA322539 (MT2A Antibody) at dilution 1/70, treated with fusion protein. (Original magnification: x200)