

Product datasheet for **TA322536**

T box 2 (TBX2) Rabbit Polyclonal Antibody

Product data:

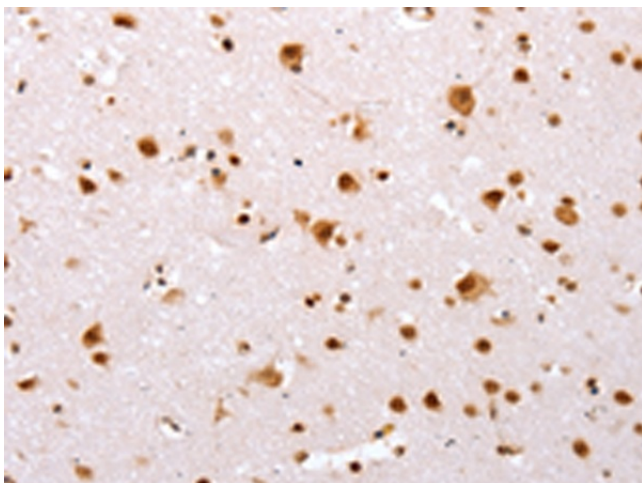
Product Type:	Primary Antibodies
Applications:	IHC
Recommended Dilution:	IHC: 25-100 Positive control: Human brain Predicted cell location: Cytoplasm, Nucleus
Reactivity:	Human, Mouse
Host:	Rabbit
Isotype:	IgG
Clonality:	Polyclonal
Immunogen:	Synthetic peptide corresponding to a region derived from 699-712 amino acids of Human T-box 2
Formulation:	PBS pH7.3, 0.05% NaN ₃ , 50% glycerol
Concentration:	lot specific
Purification:	Antigen affinity purification
Conjugation:	Unconjugated
Storage:	Store at -20°C as received.
Stability:	Stable for 12 months from date of receipt.
Gene Name:	T-box 2
Database Link:	NP_005985 Entrez Gene 21385 Mouse Entrez Gene 6909 Human Q13207
Background:	This gene is a member of a phylogenetically conserved family of genes that share a common DNA-binding domain; the T-box. T-box genes encode transcription factors involved in the regulation of developmental processes. This gene product is the human homolog of mouse Tbx2; and shares strong sequence similarity with Drosophila omb protein. Expression studies indicate that this gene may have a potential role in tumorigenesis as an immortalizing agent. Transcript heterogeneity due to alternative polyadenylation has been noted for this gene.
Synonyms:	FLJ10169



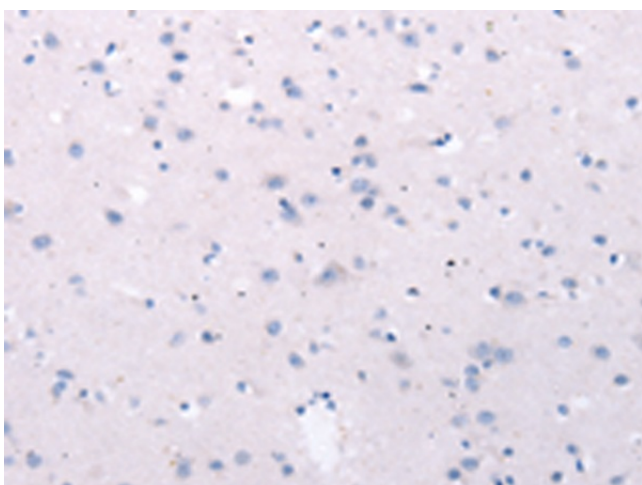
[View online »](#)

Protein Families: Transcription Factors

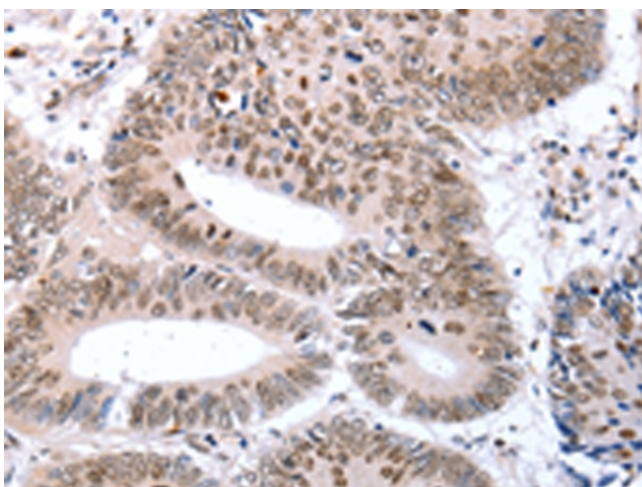
Product images:



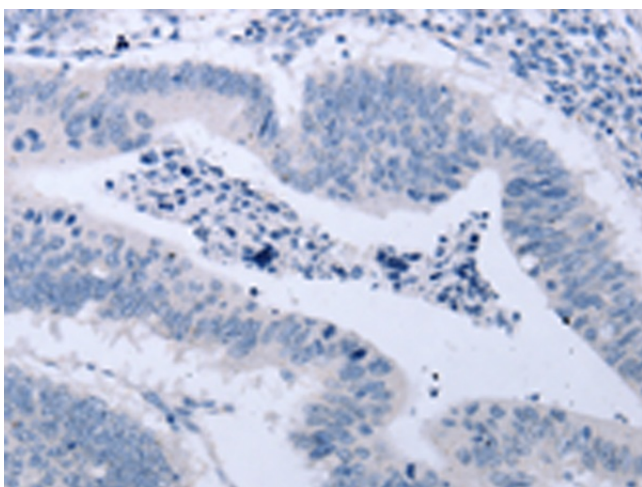
Immunohistochemistry of paraffin-embedded Human brain tissue using TA322536 (TBX2 Antibody) at dilution 1/32 (Original magnification: ×200)



Immunohistochemistry of paraffin-embedded Human brain tissue using TA322536 (TBX2 Antibody) at dilution 1/32, treated with synthetic peptide. (Original magnification: ×200)



Immunohistochemistry of paraffin-embedded Human colon cancer tissue using TA322536 (TBX2 Antibody) at dilution 1/32 (Original magnification: $\times 200$)



Immunohistochemistry of paraffin-embedded Human colon cancer tissue using TA322536 (TBX2 Antibody) at dilution 1/32, treated with synthetic peptide. (Original magnification: $\times 200$)