

## Product datasheet for **TA322531**

### MYL9 Rabbit Polyclonal Antibody

#### Product data:

Product Type:	Primary Antibodies
Applications:	IHC, WB
Recommended Dilution:	WB: 1000-5000 WB positive control: Jurkat and 231 cells IHC: 50-200 Positive control: Human liver cancer Predicted cell location: Cytoplasm
Reactivity:	Human, Mouse, Rat
Host:	Rabbit
Isotype:	IgG
Clonality:	Polyclonal
Immunogen:	Synthetic peptide corresponding to a region derived from 2-14 amino acids of Human myosin, light chain 9, regulatory
Formulation:	PBS pH7.3, 0.05% NaN <sub>3</sub> , 50% glycerol
Concentration:	lot specific
Purification:	Antigen affinity purification
Conjugation:	Unconjugated
Storage:	Store at -20°C as received.
Stability:	Stable for 12 months from date of receipt.
Predicted Protein Size:	14 kDa
Gene Name:	myosin light chain 9
Database Link:	<a href="#">NP_006088</a> <a href="#">Entrez Gene 98932 Mouse</a> <a href="#">Entrez Gene 296313 Rat</a> <a href="#">Entrez Gene 10398 Human</a> <a href="#">P24844</a>



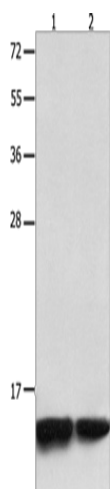
[View online »](#)

**Background:** Myosin; a structural component of muscle; consists of two heavy chains and four light chains. The protein encoded by this gene is a myosin light chain that may regulate muscle contraction by modulating the ATPase activity of myosin heads. The encoded protein binds calcium and is activated by myosin light chain kinase. Two transcript variants encoding different isoforms have been found for this gene.

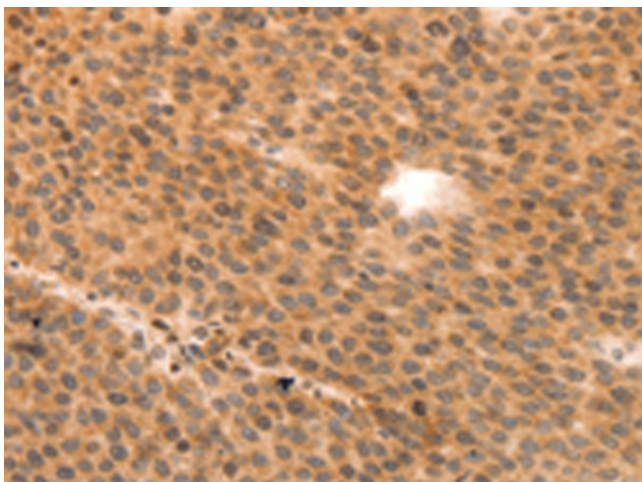
**Synonyms:** LC20; MLC-2C; MLC2; MRLC1; MYRL2

**Protein Pathways:** Focal adhesion, Leukocyte transendothelial migration, Regulation of actin cytoskeleton, Tight junction, Vascular smooth muscle contraction

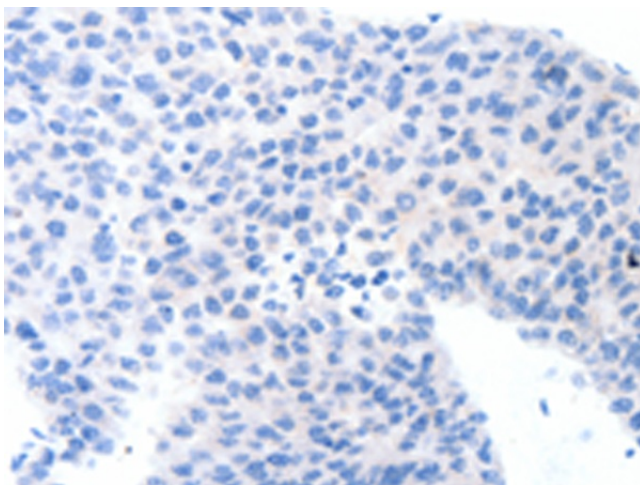
### Product images:



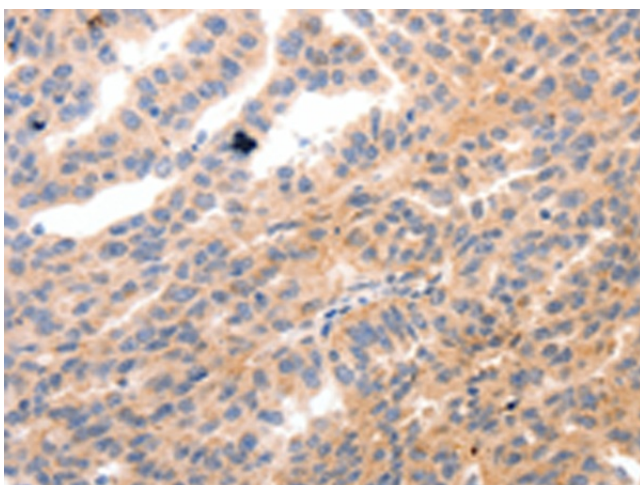
Gel: 12%SDS-PAGE  
Lysate: 40 µg  
Lane 1-2: Jurkat cells  
231 cells  
Primary antibody: TA322531 (MYL9 Antibody) at dilution 1/1500  
Secondary antibody: Goat anti rabbit IgG at 1/8000 dilution  
Exposure time: 30 seconds



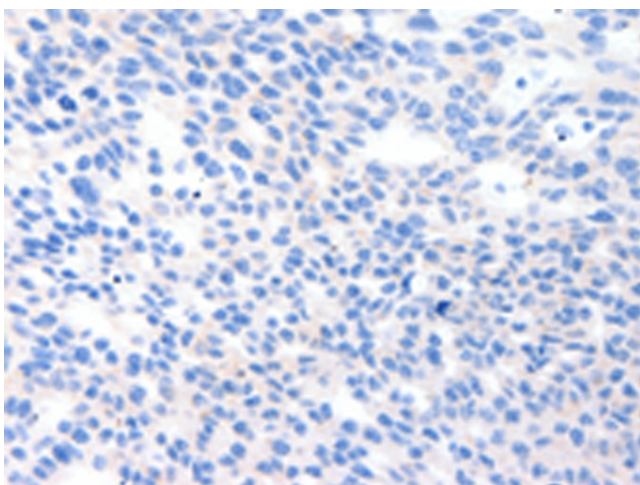
Immunohistochemistry of paraffin-embedded Human liver cancer tissue using TA322531 (MYL9 Antibody) at dilution 1/80 (Original magnification: ×200)



Immunohistochemistry of paraffin-embedded Human liver cancer tissue using TA322531 (MYL9 Antibody) at dilution 1/80, treated with synthetic peptide. (Original magnification:  $\times 200$ )



Immunohistochemistry of paraffin-embedded Human ovarian cancer tissue using TA322531 (MYL9 Antibody) at dilution 1/80 (Original magnification:  $\times 200$ )



Immunohistochemistry of paraffin-embedded Human ovarian cancer tissue using TA322531 (MYL9 Antibody) at dilution 1/80, treated with synthetic peptide. (Original magnification:  $\times 200$ )