

Product datasheet for **TA322530**

Neurofilament (NEFL) Rabbit Polyclonal Antibody

Product data:

Product Type:	Primary Antibodies
Applications:	IHC
Recommended Dilution:	IHC: 25-100 Positive control: Human colon cancer Predicted cell location: Cell membrane
Reactivity:	Human
Host:	Rabbit
Isotype:	IgG
Clonality:	Polyclonal
Immunogen:	Full length fusion protein
Formulation:	PBS pH7.3, 0.05% NaN ₃ , 50% glycerol
Concentration:	lot specific
Purification:	Antigen affinity purification
Conjugation:	Unconjugated
Storage:	Store at -20°C as received.
Stability:	Stable for 12 months from date of receipt.
Gene Name:	neurofilament, light polypeptide
Database Link:	NP_006149 Entrez Gene 4747 Human P07196
Background:	Neurofilaments are type IV intermediate filament heteropolymers composed of light; medium; and heavy chains. Neurofilaments comprise the axoskeleton and they functionally maintain the neuronal caliber. They may also play a role in intracellular transport to axons and dendrites. This gene encodes the light chain neurofilament protein. Mutations in this gene cause Charcot-Marie-Tooth disease types 1F (CMT1F) and 2E (CMT2E); disorders of the peripheral nervous system that are characterized by distinct neuropathies. A pseudogene has been identified on chromosome Y.
Synonyms:	CMT1F; CMT2E; NF-L; NF68; NFL; PPP1R110

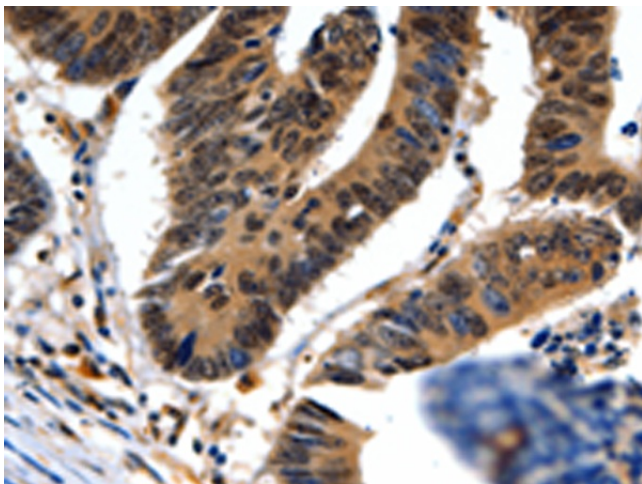


[View online »](#)

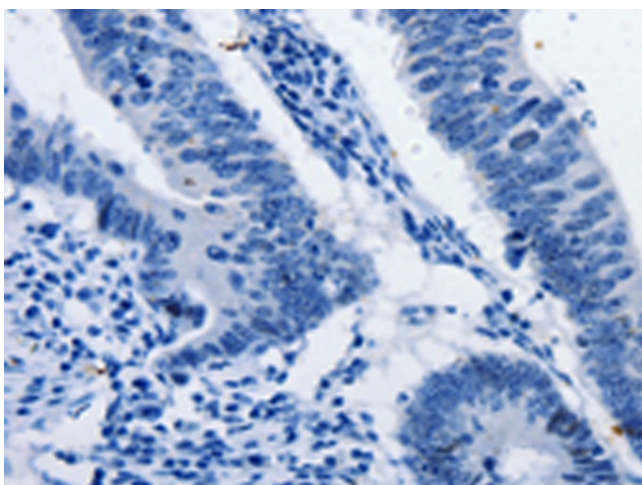
Protein Families: Druggable Genome, ES Cell Differentiation/IPS

Protein Pathways: Amyotrophic lateral sclerosis (ALS)

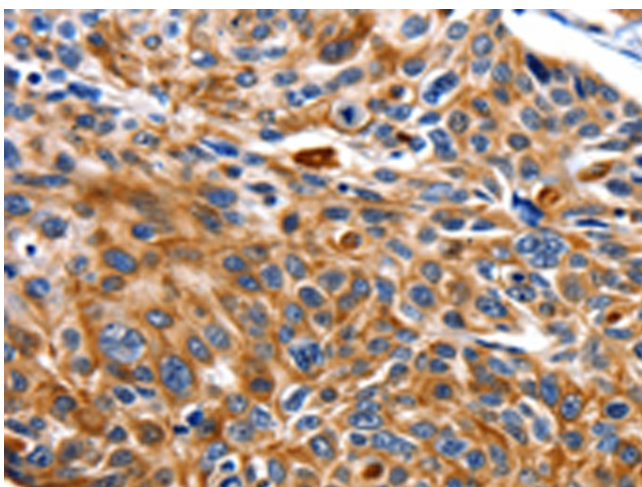
Product images:



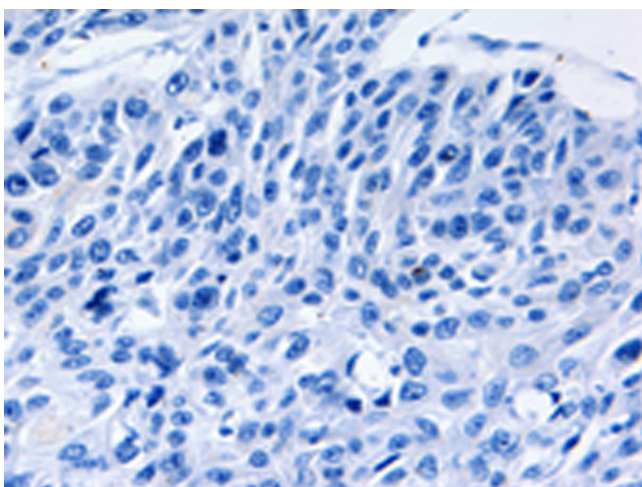
Immunohistochemistry of paraffin-embedded Human colon cancer tissue using TA322530 (NEFL Antibody) at dilution 1/20 (Original magnification: $\times 200$)



Immunohistochemistry of paraffin-embedded Human colon cancer tissue using TA322530 (NEFL Antibody) at dilution 1/20, treated with fusion protein. (Original magnification: $\times 200$)



Immunohistochemistry of paraffin-embedded Human esophagus cancer tissue using TA322530 (NEFL Antibody) at dilution 1/20 (Original magnification: $\times 200$)



Immunohistochemistry of paraffin-embedded Human esophagus cancer tissue using TA322530 (NEFL Antibody) at dilution 1/20, treated with fusion protein. (Original magnification: $\times 200$)