

## Product datasheet for **TA322527**

### Neurotrophin 4 (NTF4) Rabbit Polyclonal Antibody

#### Product data:

Product Type:	Primary Antibodies
Applications:	IHC, WB
Recommended Dilution:	WB: 500-2000 WB positive control: 231 cells IHC: 10-50 Positive control: Human colon cancer Predicted cell location: Cytoplasm
Reactivity:	Human, Mouse, Rat
Host:	Rabbit
Isotype:	IgG
Clonality:	Polyclonal
Immunogen:	Fusion protein corresponding to a region derived from 25-210 amino acids of human neurotrophin 4
Formulation:	PBS pH7.3, 0.05% NaN <sub>3</sub> , 50% glycerol
Concentration:	lot specific
Purification:	Antigen affinity purification
Conjugation:	Unconjugated
Storage:	Store at -20°C as received.
Stability:	Stable for 12 months from date of receipt.
Predicted Protein Size:	22 kDa
Gene Name:	neurotrophin 4
Database Link:	<a href="#">NP_006170</a> <a href="#">Entrez Gene 25730 Rat</a> <a href="#">Entrez Gene 4909 Human</a> <a href="#">P34130</a>



[View online »](#)

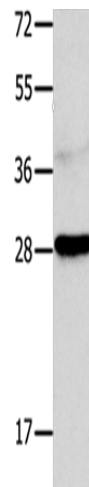
**Background:** This gene is a member of a family of neurotrophic factors; neurotrophins; that control survival and differentiation of mammalian neurons. The expression of this gene is ubiquitous and less influenced by environmental signals. While knock-outs of other neurotrophins including nerve growth factor; brain-derived neurotrophic factor; and neurotrophin 3 prove lethal during early postnatal development; NTF5-deficient mice only show minor cellular deficits and develop normally to adulthood.

**Synonyms:** 5; GLC10; GLC10; NT-4; NT-5; NT4; NT5; NTF5

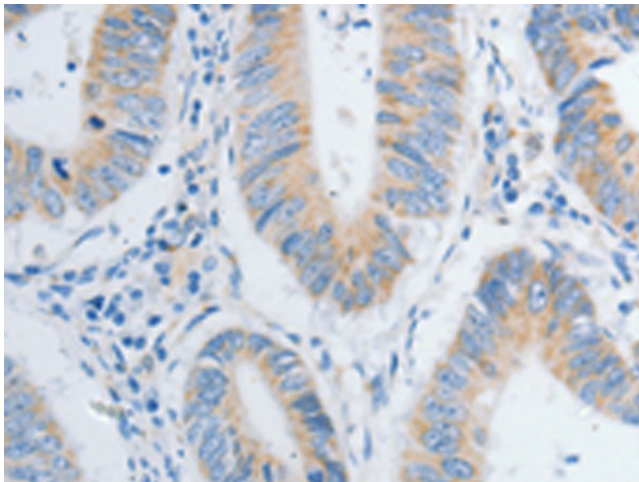
**Protein Families:** Druggable Genome, Secreted Protein

**Protein Pathways:** MAPK signaling pathway, Neurotrophin signaling pathway

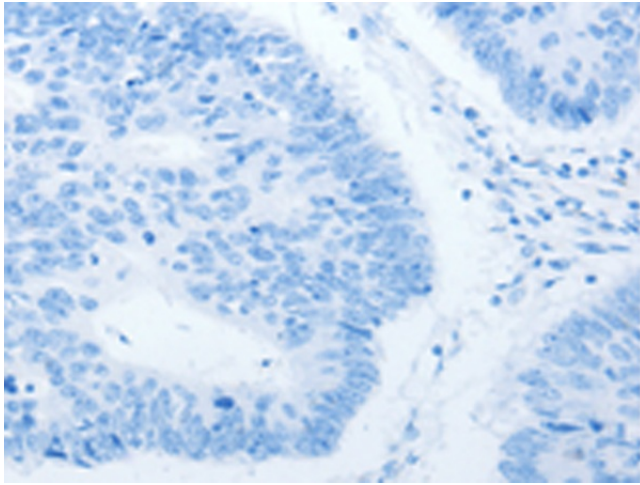
### Product images:



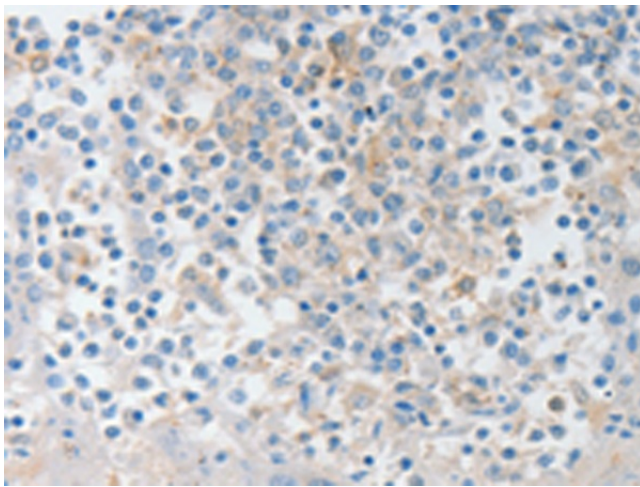
Gel: 12%SDS-PAGE  
Lysate: 40 µg  
Lane: 231 cells  
Primary antibody: TA322527 (NTF4 Antibody) at dilution 1/300  
Secondary antibody: Goat anti rabbit IgG at 1/8000 dilution  
Exposure time: 2 minutes



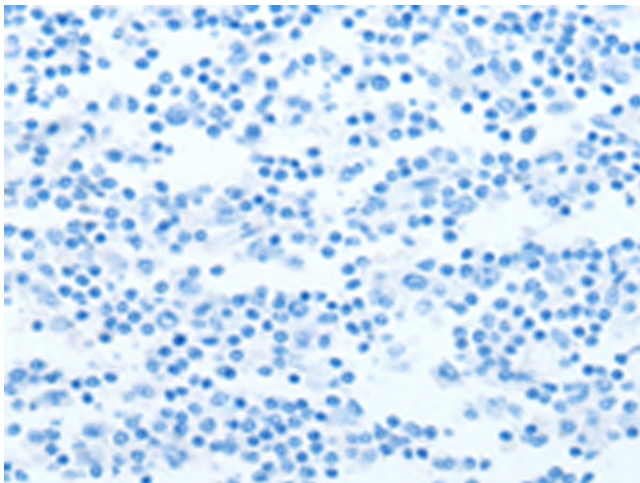
Immunohistochemistry of paraffin-embedded Human colon cancer tissue using TA322527 (NTF4 Antibody) at dilution 1/20 (Original magnification: ×200)



Immunohistochemistry of paraffin-embedded Human colon cancer tissue using TA322527 (NTF4 Antibody) at dilution 1/20, treated with fusion protein. (Original magnification: ×200)



Immunohistochemistry of paraffin-embedded Human tonsil tissue using TA322527 (NTF4 Antibody) at dilution 1/20 (Original magnification: ×200)



Immunohistochemistry of paraffin-embedded Human tonsil tissue using TA322527 (NTF4 Antibody) at dilution 1/20, treated with fusion protein. (Original magnification: ×200)