

Product datasheet for **TA322515S**

AIMP2 Rabbit Polyclonal Antibody

Product data:

Product Type:	Primary Antibodies
Applications:	IHC, WB
Recommended Dilution:	WB: 200-1000 WB positive control: HepG2 and A549 cells IHC: 50-200 Positive control: Human thyroid cancer Predicted cell location: Cytoplasm
Reactivity:	Human, Mouse, Rat
Host:	Rabbit
Isotype:	IgG
Clonality:	Polyclonal
Immunogen:	Fusion protein corresponding to a region derived from 11-200 of Human Aminoacyl tRNA synthase complex-interacting multifunctional protein 2
Formulation:	PBS pH7.3, 0.05% NaN ₃ , 50% glycerol
Purification:	Antigen affinity purification
Conjugation:	Unconjugated
Storage:	Store at -20°C as received.
Stability:	Stable for 12 months from date of receipt.
Predicted Protein Size:	35 kDa
Gene Name:	aminoacyl tRNA synthetase complex interacting multifunctional protein 2
Database Link:	NP_006294 Entrez Gene 231872 MouseEntrez Gene 288480 RatEntrez Gene 7965 Human Q13155
Background:	The JTV1 gene is located on chromosome 7p22 flanked by two genes, HRI and PMS2. JTV1 and HRI overlap slightly and are arranged in a tail-to-tail fashion. JTV1 and PMS2 are separated by approximately 200 base pairs and are arranged head-to-head. JTV1 is transcribed in the opposite direction compared to HRI and PMS2. The function of the JTV1 gene product is unknown.

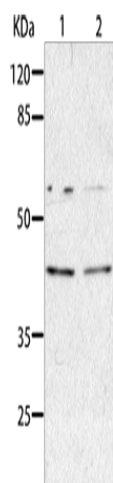


[View online »](#)

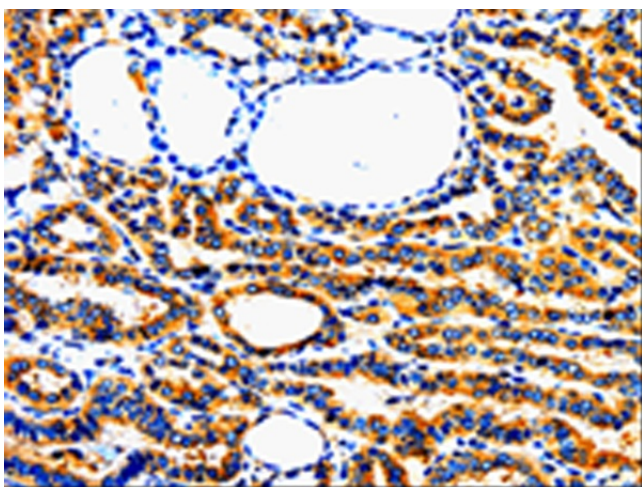
Synonyms: JTV-1; JTV1; P38; PRO0992

Protein Families: Stem cell - Pluripotency

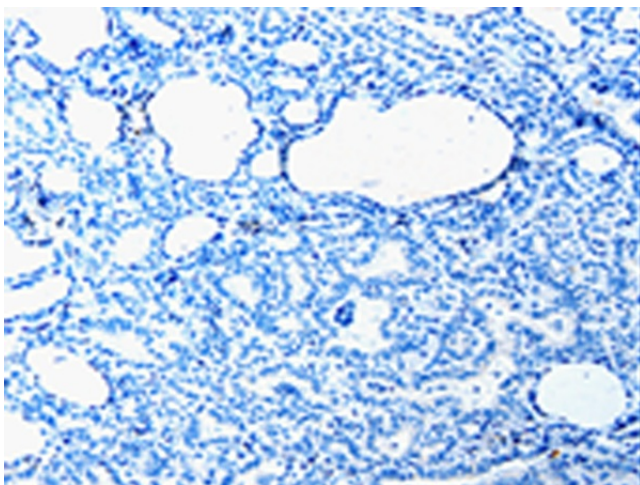
Product images:



Gel: 8%SDS-PAGE
Lysate: 40 μ g
Lane 1-2: HepG2 cells
A549 cells
Primary antibody: [TA322515] (AIMP2 Antibody)
at dilution 1/350
Secondary antibody: Goat anti rabbit IgG at
1/8000 dilution
Exposure time: 1 minute



Immunohistochemistry of paraffin-embedded
Human thyroid cancer tissue using [TA322515]
(AIMP2 Antibody) at dilution 1/50 (Original
magnification: $\times 200$)



Immunohistochemistry of paraffin-embedded Human thyroid cancer tissue using [TA322515] (AIMP2 Antibody) at dilution 1/50, treated with fusion protein. (Original magnification: ×200)